

# SIRUBA®

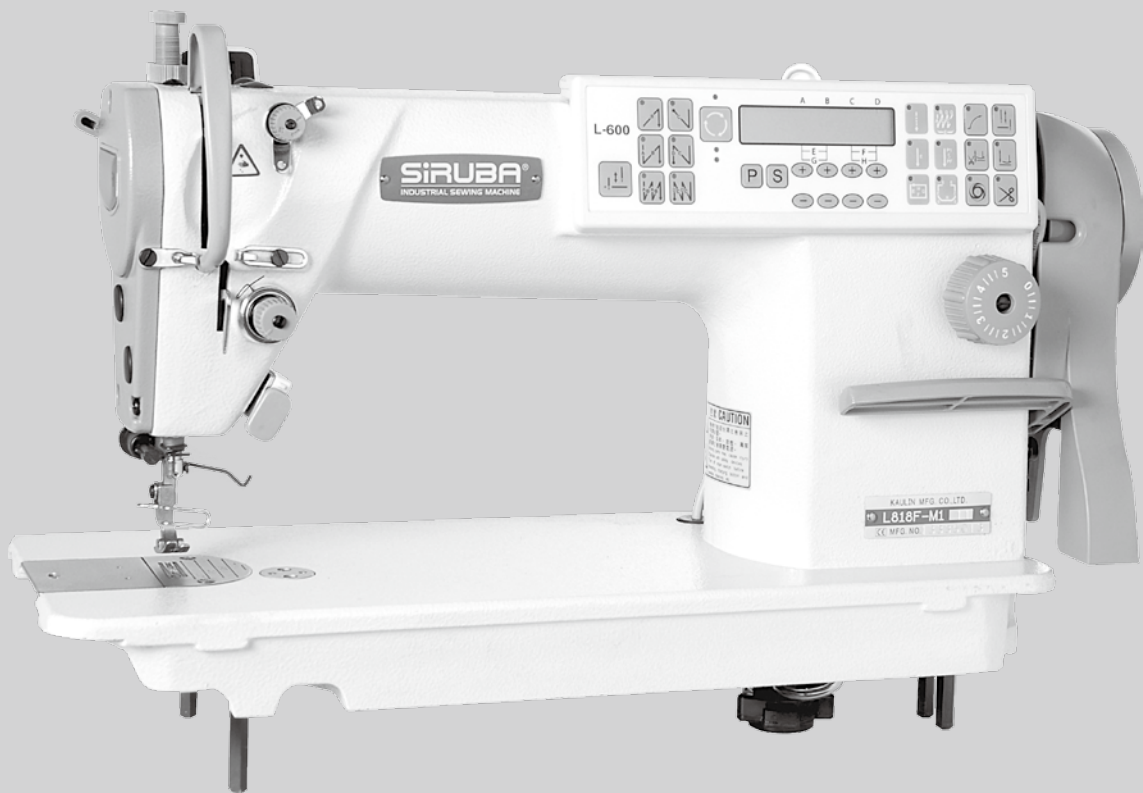
銀箭牌工業用縫紉機

INDUSTRIAL SEWING MACHINE

# L818F

WITH TRIMMER

## 零件圖 PARTS LIST

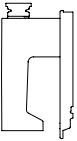

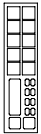

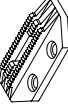
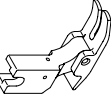







CE



高林股份有限公司  
KAULIN MFG. CO., LTD.

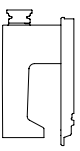


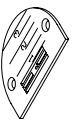
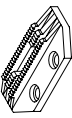
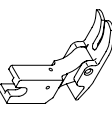


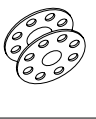
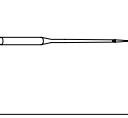
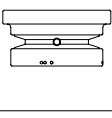


										
MODEL	SUB-CLASS	OPERATING PANEL	NEEDLE PLATE	FEED DOG	PRESSER FOOT	HOOK ASM	BOBBIN CASE ASM	BOBBIN	NEEDLE	HAND WHEEL
機 型	規 格	操 作 盒	針 板	送 具	押 具	梭 頭	梭 殼	梭 子	針 號	皮 帶 輪
L818F-L1-00 ~ L818F-L1-03	薄布料	LA55F-A	E701	D701	P721	G121	G202	G303	DA*1#9	GLH01-A1
L818F-L1-00A ~ L818F-L1-03A			E701	D701	P721	G121	G202	G303	DA*1#9	GLH01Q-E
L818F-L1-10 ~ L818F-L1-13			E701	D701	P721	G121	G121	G202	G303	DA*1#9
L818F-M1-00 L818F-M1-03	薄中布 至 厚布料	LA55F-A	E704	D701	P701	G121	G202	G303	DB*1#11	GLH01-A1
L818F-M1-00A L818F-M1-03A			E704	D701	P701	G121	G202	G303	DB*1#11	GLH01Q-E
L818F-M1A-00 (L818F-M1C-00) L818F-M1A-03 (L818F-M1C-03)			E704D	D702	P701	G121	G121	G202	G303	DB*1#11
L818F-M1A-00A (L818F-M1C-00A) L818F-M1A-03A (L818F-M1C-03A)	厚布料	L600	E704	D701	P701	G121	G202	G303	DB*1#11	GLH01-A1
L818F-M1-10 L818F-M1-13			E704D	D702	P701	G121	G202	G303	DB*1#11	GLH01Q-E
L818F-M1A-10 ( L818F-M1C-10 ) L818F-M1A-13 ( L818F-M1C-13 )			E704D	D702	P701	G121	G121	G202	G303	DB*1#11

## 規格件表 CONVERSION CHART

# 規格件表 CONVERSION CHART

MODEL	SUB-CLASS	OPERATING PANEL	NEEDLE PLATE	FEED DOG	PRESSER FOOT	HOOK ASM	BOBBIN CASE ASM	BOBBIN	NEEDLE	HAND WHEEL	
機 型	規 格	操作盒	針 板	送 具	押 具	梭 頭	梭 殼	梭 子	針 號	皮帶輪	
L818F-HM1-00 L818F-HM1-03	薄中布 至 厚布料	L A55F-A	E704	D701	P701	G121	G202	G303	DB*1#11	GLH01-A1	
L818F-HM1A-00 L818F-HM1A-03			E704D	D702	P701	G121	G202	G303	DB*1#11	GLH01-A1	
L818F-HM1-10 L818F-HM1-13			□L600	E704	D701	P701	G121	G202	G303	DB*1#11	GLH01-A1
L818F-HM1A-10 L818F-HM1A-13			□L600	E704D	D702	P701	G121	G202	G303	DB*1#11	GLH01-A1

										
MODEL	SUB-CLASS	OPERATING PANEL	NEEDLE PLATE	FEED DOG	PRESSER FOOT	HOOK ASM	BOBBIN CASE ASM	BOBBIN	NEEDLE	HAND WHEEL
機 型	規 格	操作盒	針 板	送 具	押 具	梭 頭	梭 殼	梭 子	針 號	皮 帶 輪
L818F-H1-00 L818F-H1-03			E711	D711	P711	G122J	G202	G303	DB*1#21	GLH01-A1
L818F-H1-00A L818F-H1-03A			E711	D711	P711	G122J	G202	G303	DB*1#21	GLH01Q-E
L818F-H1A-00 (L818F-H1C-00) L818F-H1A-03 (L818F-H1C-03)	中厚布	LA55F-A	E711D	D711D	P711D	G122J	G202	G303	DB*1#21	GLH01-A1
L818F-H1A-00A (L818F-H1C-00A) L818F-H1A-03A (L818F-H1C-03A)	至		E711D	D711D	P711D	G122J	G202	G303	DB*1#21	GLH01Q-E
L818F-H1-10 L818F-H1-13	厚布料	□L600	E711	D711	P711	G122J	G202	G303	DB*1#21	GLH01-A1
L818F-H1A-10 (L818F-H1C-10) L818F-H1A-13 (L818F-H1C-13)		□L600	E711D	D711D	P711D	G122J	G202	G303	DB*1#21	GLH01-A1

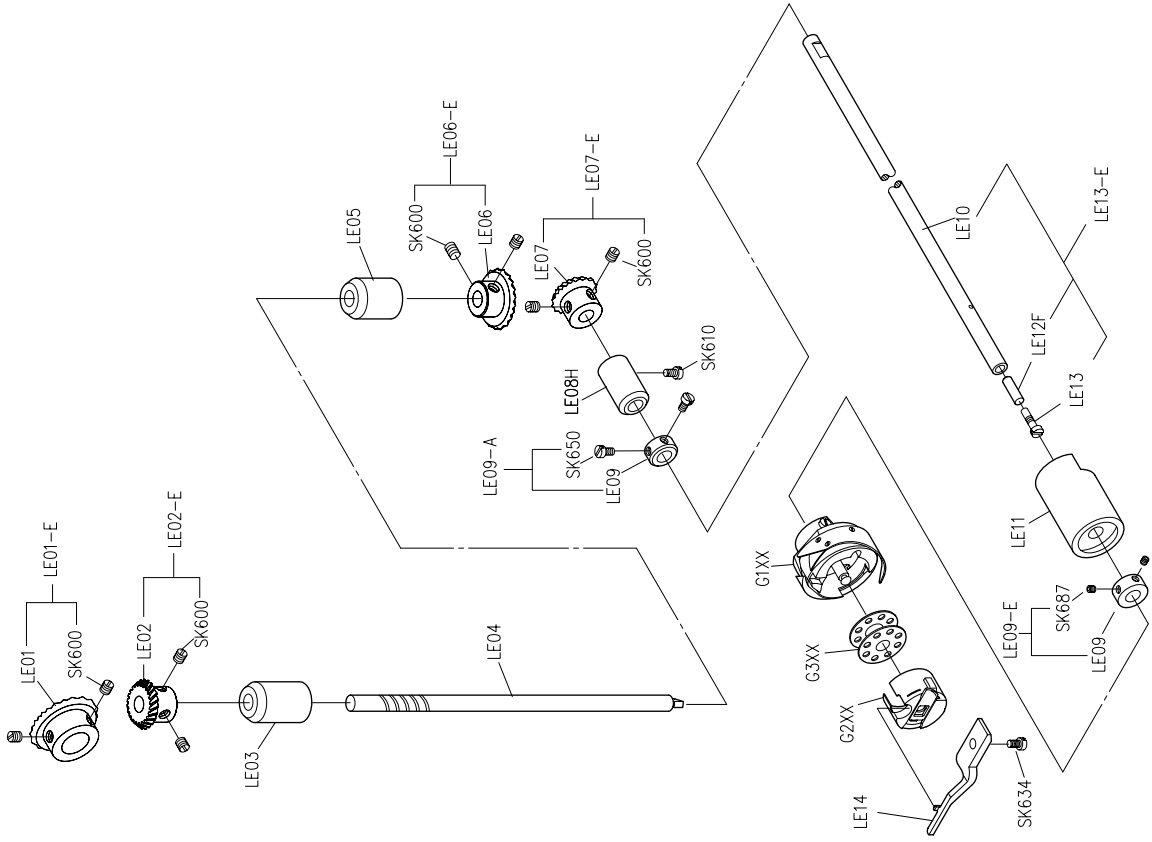
規格件表 CONVERSION CHART

# 規格件表 CONVERSION CHART

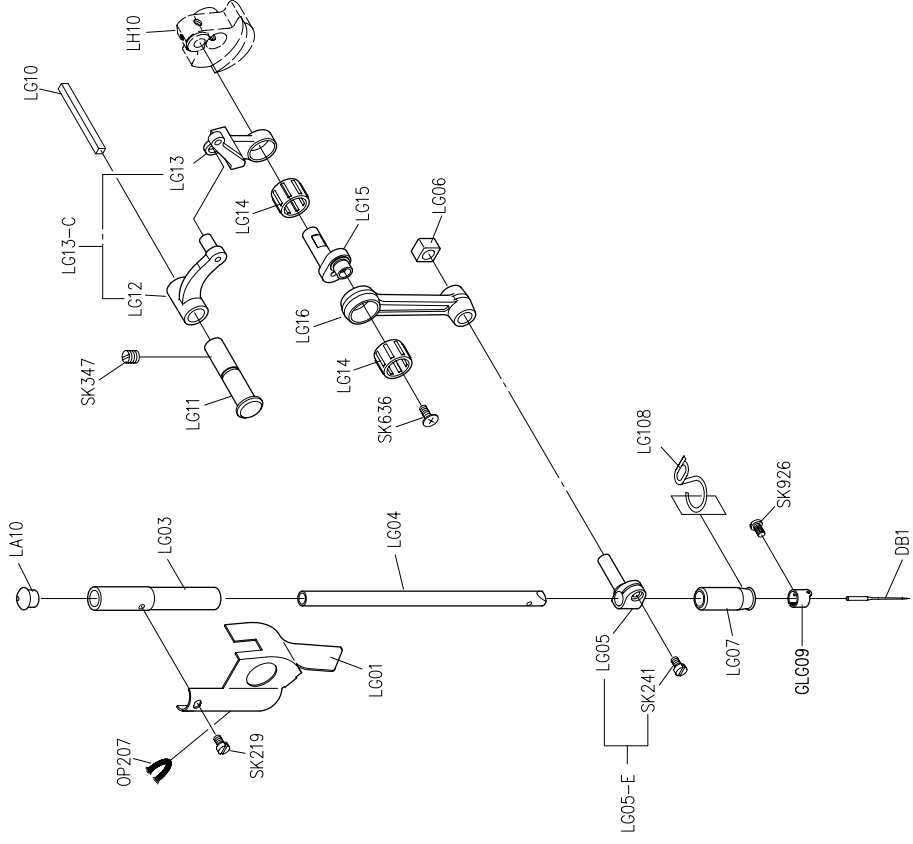
MODEL 機 型	SUB-CLASS 規 格	OPERATING PANEL 操作盒	NEEDLE PLATE 針 板	FEED DOG 送 具	PRESSER FOOT 押 具	HOOK ASM 梭 頭	BOBBIN CASE ASM 梭 殼	BOBBIN 梭 子	NEEDLE 針 號	HAND WHEEL 皮 帶 輪		
L818F-F1-00 ?	超 薄 布 料	L A55F-A	E721	D721	P721	G113	G202	G303	DB*1SF#9	GLH01-A1		
L818F-F1-00A ?			E721	D721	P721	G113	G202	G303	DB*1SF#9	GLH01Q-E		
L818F-F1-03A ?			E721	D721	P721	G113	G202	G303	DB*1SF#9	GLH01-A1		
L818F-F1-10 ?			E721	D721	P721	G113	G202	G303	DB*1SF#9	GLH01-A1		
L818F-F1-20 ?			E721	D721	P721	G113	G202	G303	DB*1SF#9	GLH01Q-E		
L818F-F1-23A ?			E721	D721	P721	G113	G202	G303	DB*1SF#9	GLH01Q-E		
L818F-F1-30 ?			E721	D721	P721	G113	G202	G303	DB*1SF#9	GLH01-A1		
L818F-F1-33			E741	D741	P721	G121	G202	G303	DB*1#9	GLH01-A1		
L818F-K1-00 ?			編 織 布 料	L A55F-A	E741	D741	P721	G121	G202	G303	DB*1#9	GLH01Q-E
L818F-K1-03A ?					E741	D741	P721	G121	G202	G303	DB*1#9	GLH01Q-E
L818F-K1-10 ?					E741	D741	P721	G121	G202	G303	DB*1#9	GLH01-A1
L818F-K1-13					E741	D741	P721	G121	G202	G303	DB*1#9	GLH01-A1



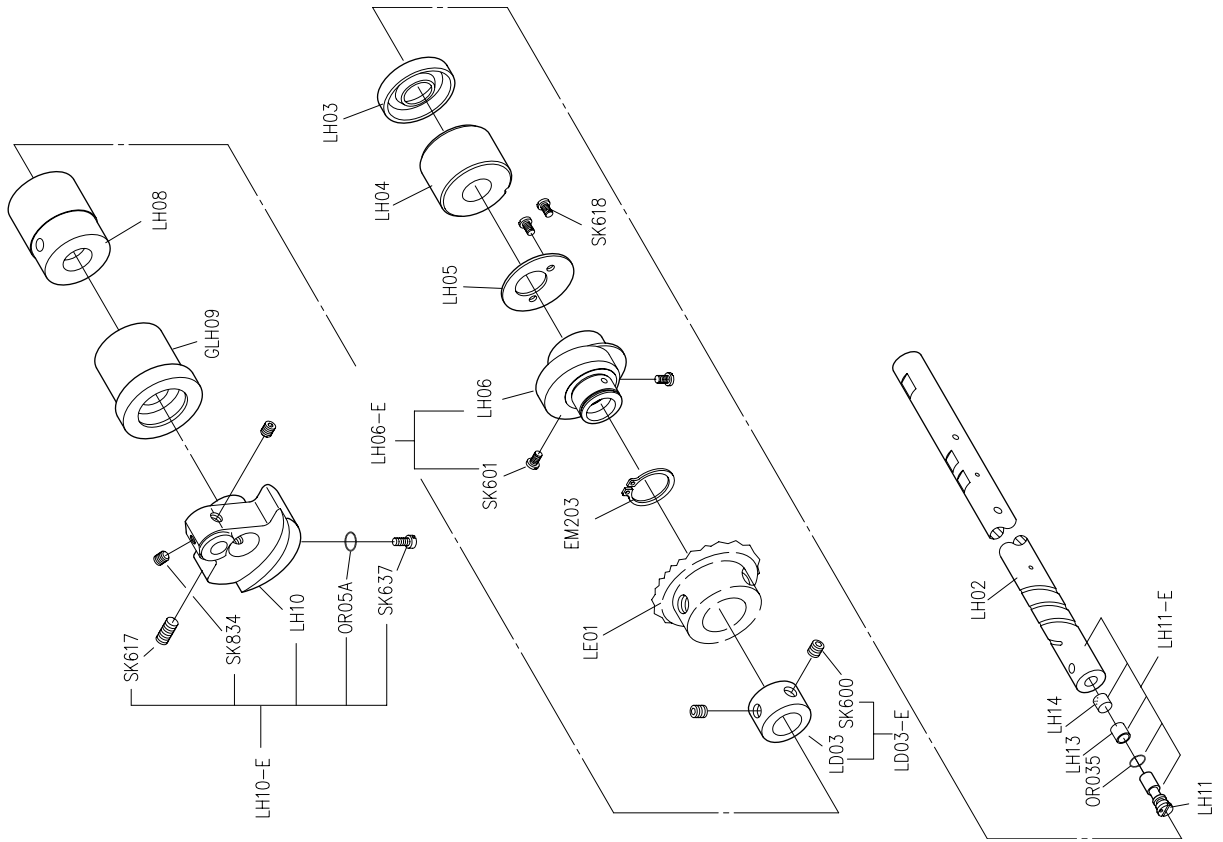




PARTS LIST FOR LE GROUP

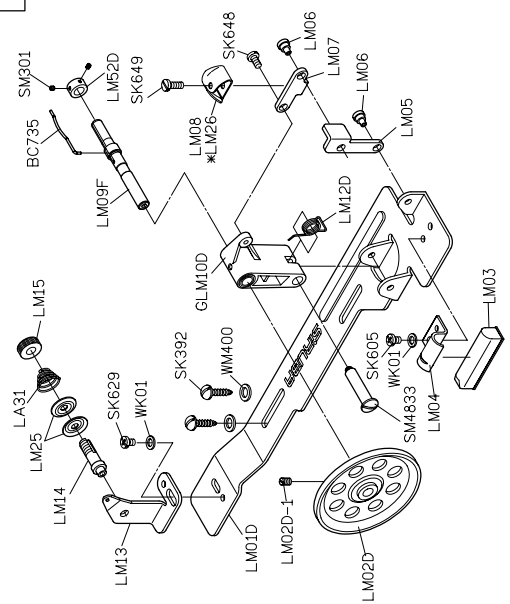


PARTS LIST FOR LG GROUP



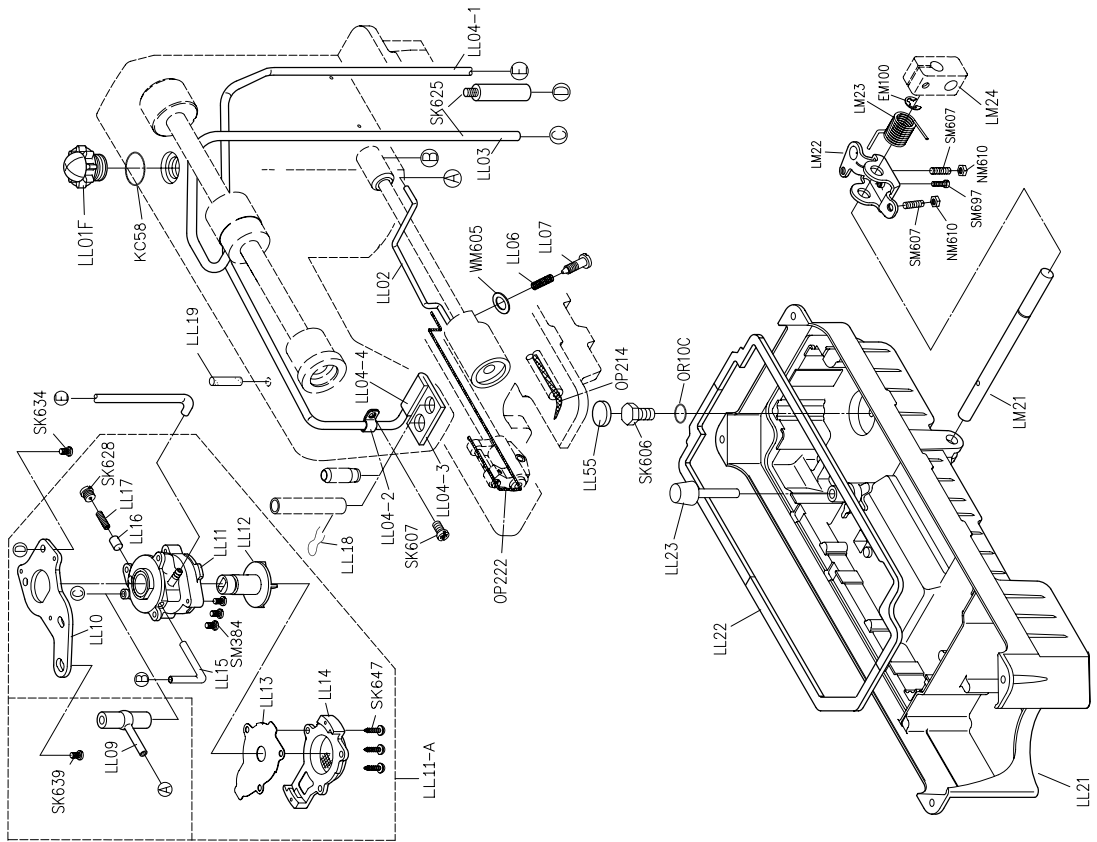
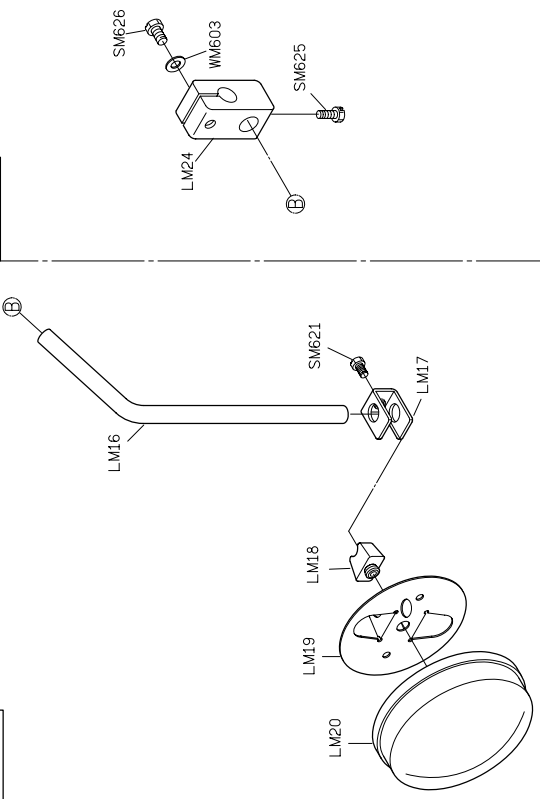
H 廠牌馬達		<p>旋轉式切刀</p>
其他廠牌馬達(可加後拉輪)		<p>GLH101-A1</p>
P 廠牌馬達		<p>GLH101Q-A1</p>
P 廠牌馬達(可加後拉輪)		<p>GLH101P-A</p>

GLM01D-A



LM24-E

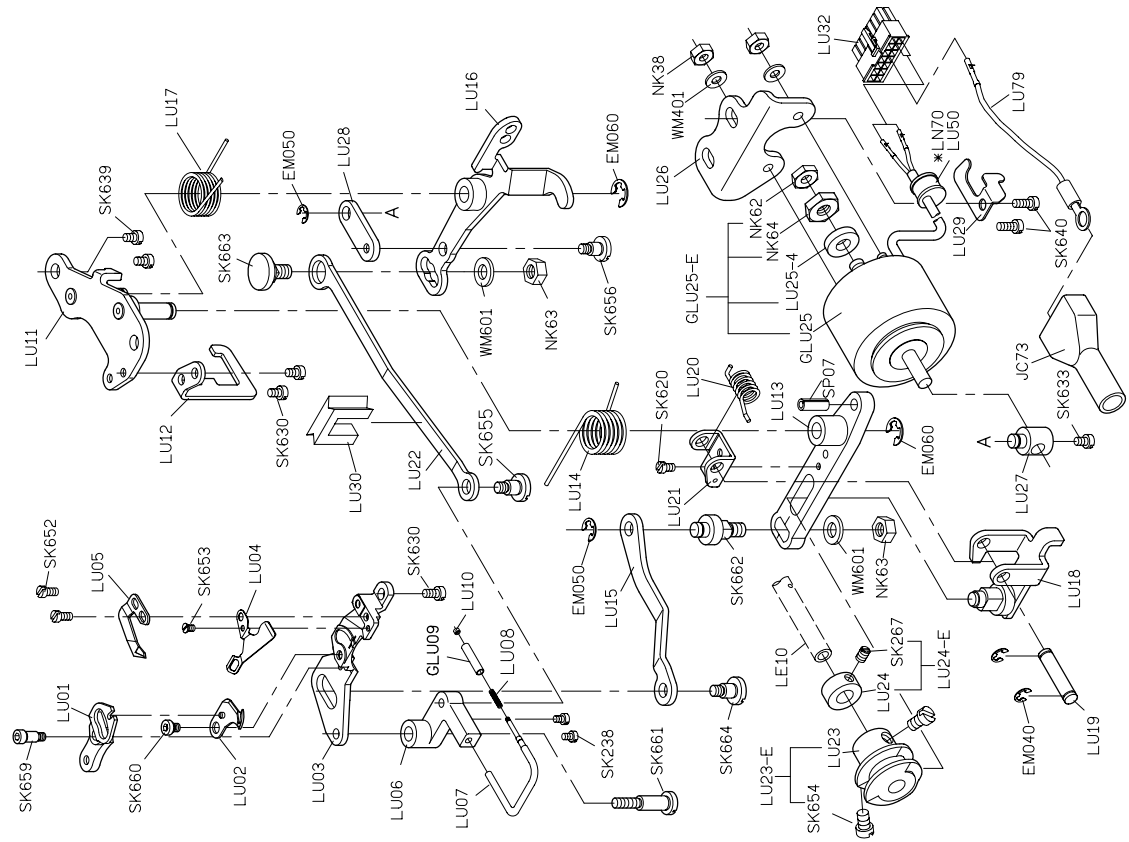
LM20-A



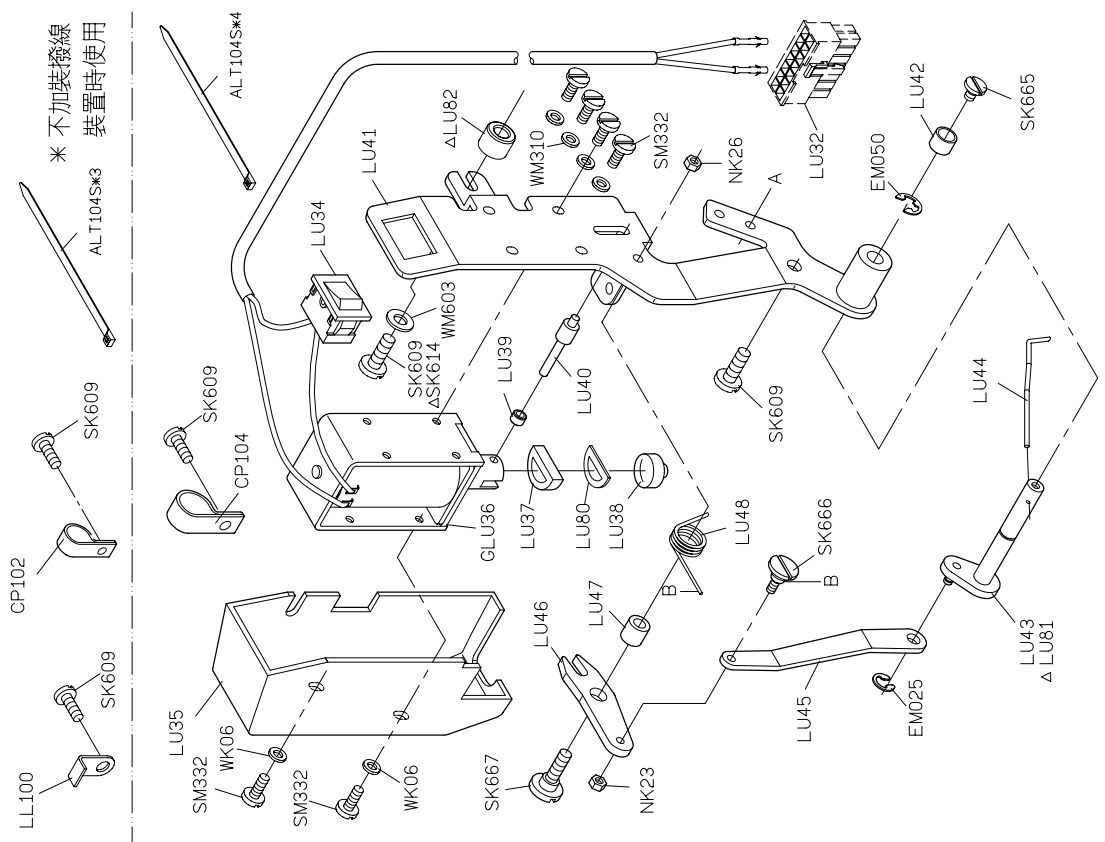
PARTS LIST FOR LL GROUP

PARTS LIST FOR LM GROUP

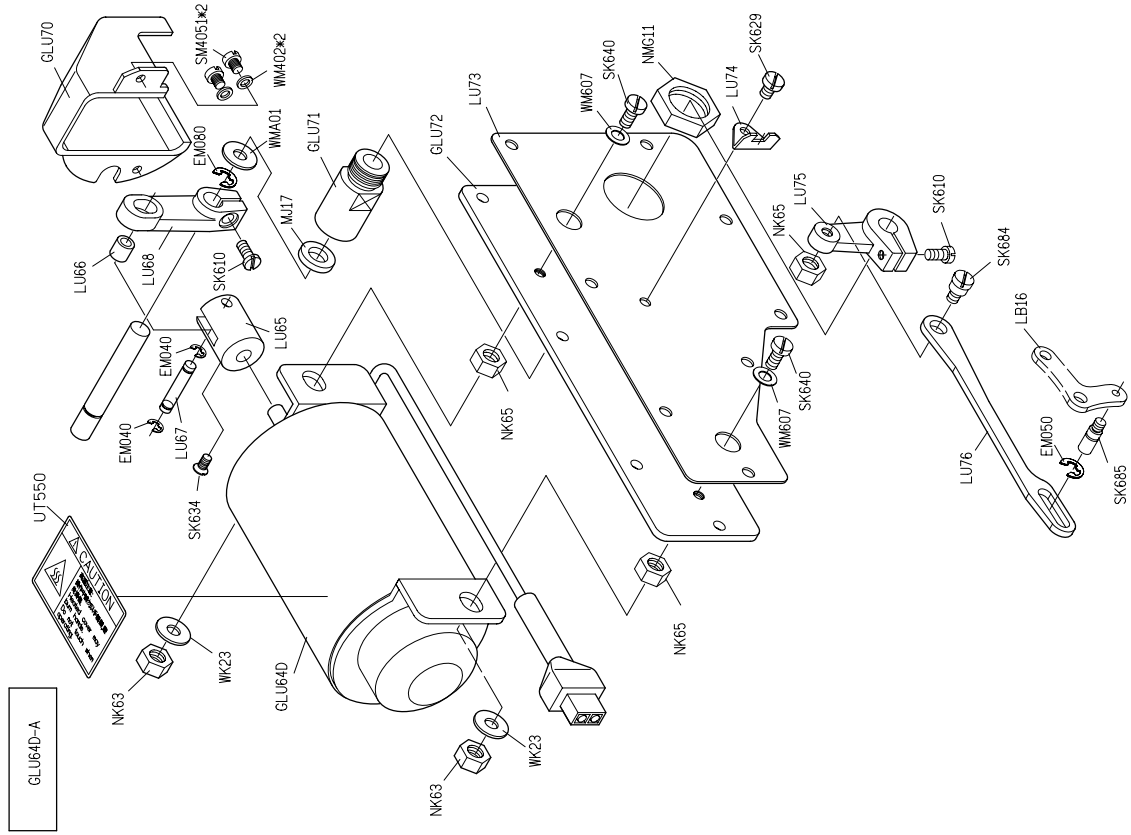
# PARTS LIST FOR LU GROUP



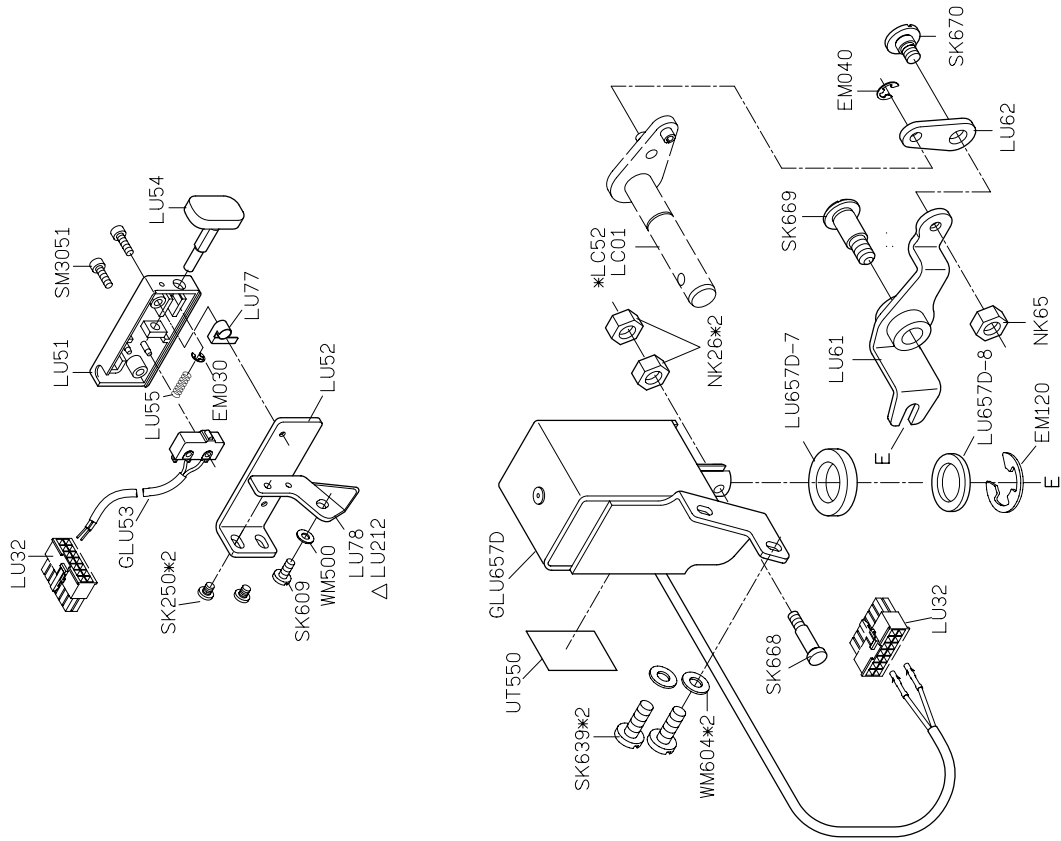
# PARTS LIST FOR LU GROUP



ALT104S\*3  
\* 不加裝撥線  
裝置時使用



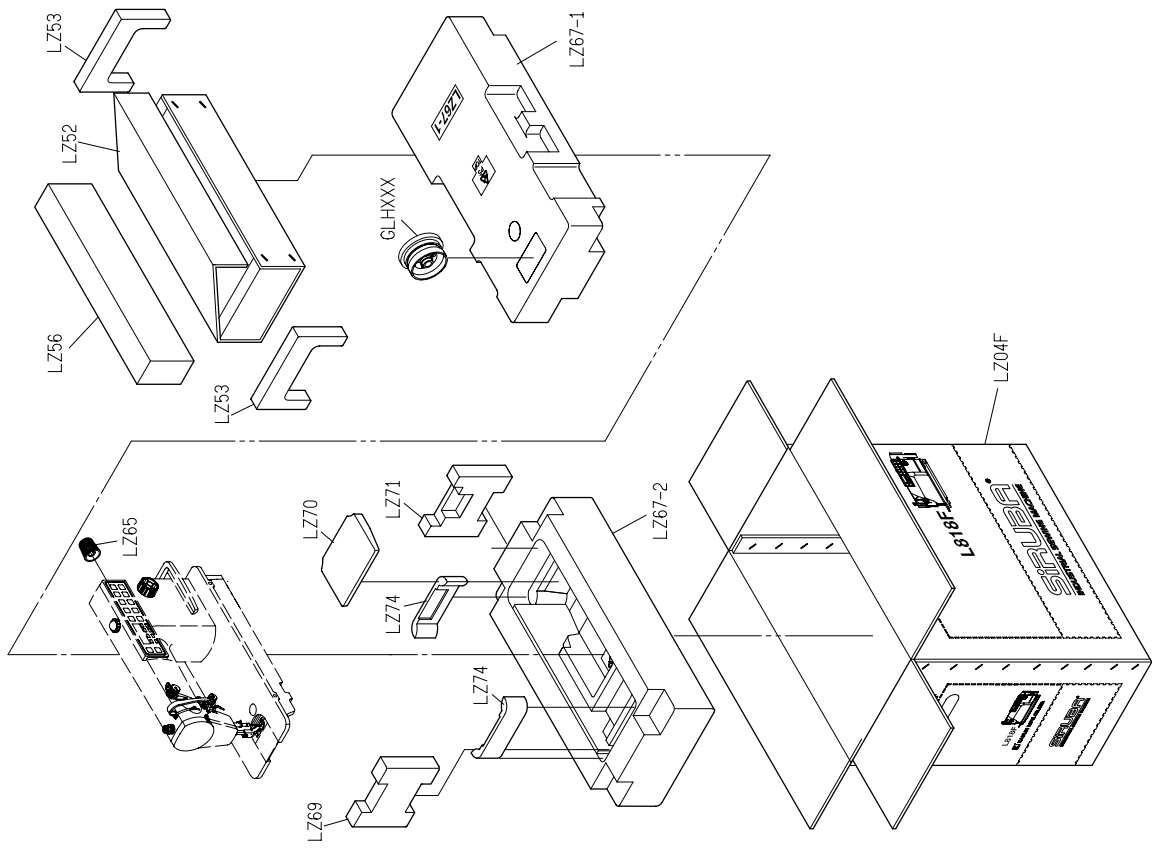
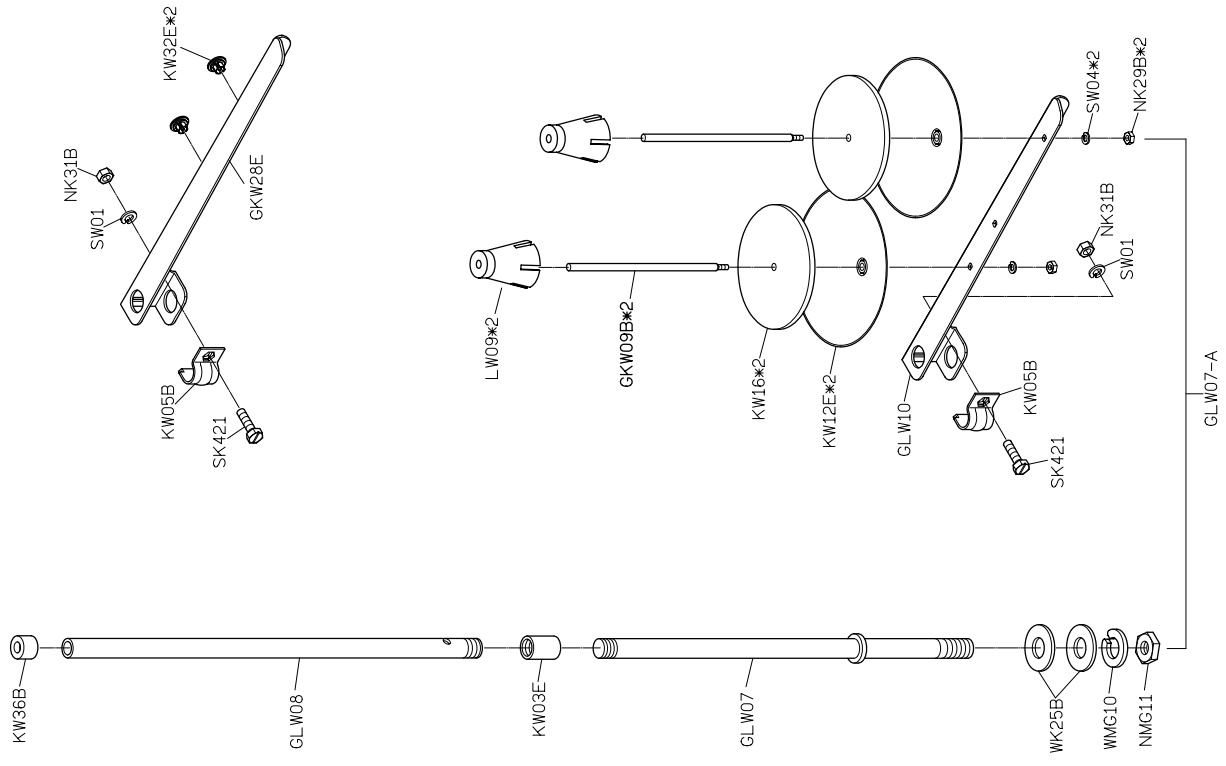
GLU64D-A



PARTS LIST FOR LU GROUP

PARTS LIST FOR LU GROUP





**PARTS LIST FOR THREAD STAND GROUP**

**PARTS LIST FOR LZ GROUP**



# L818F

WITH TRIMMER

高林股份有限公司 KAULIN MFG. CO., LTD.