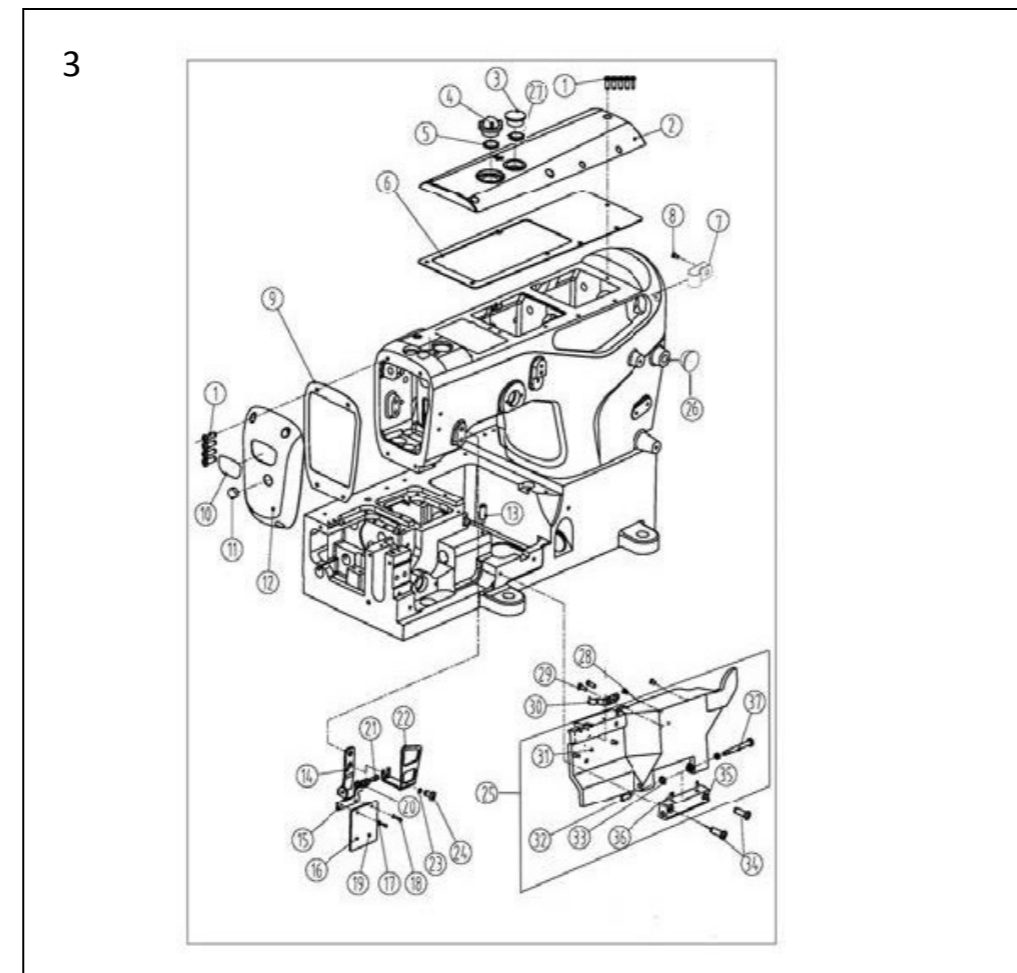


2、车架部件 (Frame assemblies)

| 序号 Ref. No | 公司件号 Part No | 参考件号 Ref. Part. no | 名称 | Description | 数量 Number |
|---------------|-----------------|-----------------------|----------------------|------------------------|--------------|
| 1 | 30122006 | 240052 | 油封 | plug | 3 |
| 2 | 21022007 | 206590 | 油封 | plug | 1 |
| 3 | 21012018 | | 油封垫 | washer | 1 |
| 4 | 20622019 | | 油封 | plug | 2 |
| 5 | 30122008 | | 油封 | plug | 1 |
| 6 | P01001 | | 销A5×13 | pin | 2 |
| 7 | 30122006 | 240052 | 油堵 | plug | 4 |
| 8 | H01001 | 240001 | 挡圈 | ring | 3 |
| 9 | 30112001 | 255002 | 滤油网 | filter | 3 |
| 10 | 30122008 | 208173 | 油封 | plug | 2 |
| 11 | 301s30001 | 250117 | 机壳螺钉 | shoulder pin | 4 |
| 12 | 30112002 | 250049 | 盖板 | cover | 1 |
| 13 | s01002 | 7017 | 螺钉M4x6.5 | screw | 1 |
| 14 | 10126021 | | 拼装销 | pin | 2 |
| 15 | 30111001 | 206590 | 油标 | oil level gauge | 1 |
| 16 | s01002 | 7017 | 螺钉M4x6.5 | screw | 1 |
| 17 | 30137001 | 250233 | 机壳牌 | sticker | 1 |
| 18 | R03001 | 210679 | 铆钉 2.5×4 | pin | 2 |
| 19 | W02003 | | 垫圈 10 | washer | 4 |
| 20 | S05001 | | 螺钉 M10×27.5 | screw | 4 |
| 21 | 001001 | | O型圈 15×2.65 | o ring | 1 |
| 22 | 301s11024 | | 滑块导座螺钉 | screw | 3 |
| 23 | L02001 | 7084 | 螺钉 M4×8 | screw | 5 |
| 24 | 30101005 | 250003 | 下节右盖 | top cover (right) | 1 |
| 25 | 30122003 | 250004 | 下节右盖垫 | gasket | 1 |
| 26 | 30122002 | 250020 | 下节左盖垫 | gasket | 1 |
| 27 | 30101004 | 250069 | 下节左盖 (23机型) | top cover plate (left) | 1 |
| 28 | 207S11007 | | GB/T65-1985螺钉 M4×7.8 | screw | 1 |
| 29 | W01001 | | GB/T 97.1-2002 M4垫片 | washer | 1 |
| 30 | 30123028 | | JK-8569-0435油棉 | oil wick | 1 |

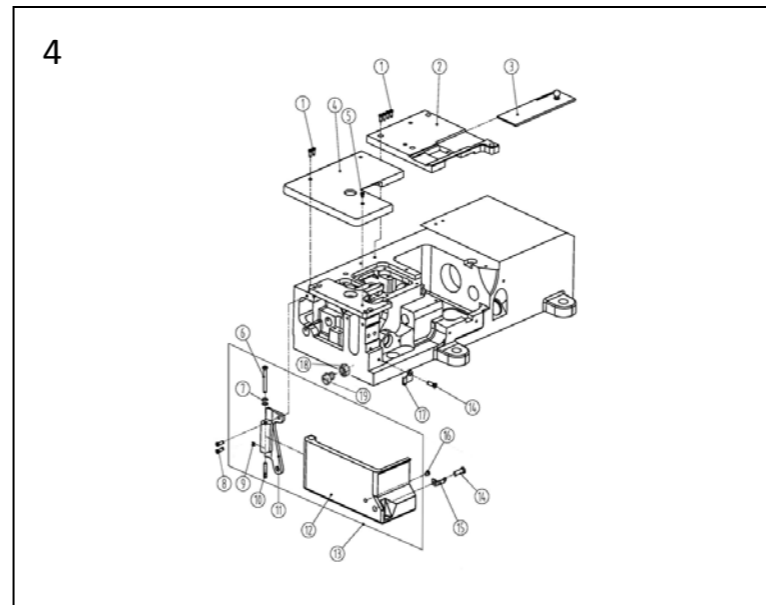
1、套筒部件 (Bushing assembly)

| 序号 Ref. No | 公司件号 Part No | 参考件号 Ref. Part. no | 名称 | Description | 数量 Number |
|---------------|-----------------|-----------------------|------------|-------------|--------------|
| 1 | 3103002 | | 胎压轴套筒 | sleeve | 1 |
| 2 | 30103021 | 210297 | 过线轴套筒 | sleeve | 2 |
| 3 | 30103020 | 250141 | 送布轴套 | sleeve | 2 |
| 4 | 30103017 | 250146 | 针杆上套 | sleeve | 1 |
| 5 | 30103062 | 251003 | 针杆下套 | sleeve | 1 |
| 6 | 30103035 | 250147 | 压脚轴套筒 | sleeve | 1 |
| 7 | 30103038 | 250136 | 喂针摆动轴套筒 | sleeve | 1 |
| 8 | 20622019 | | 油封 | plug | 1 |
| 9 | 30122039 | | 油封 | plug | 1 |
| 10 | 20103014 | | 前弯针轴后套筒 | bushing | 3 |
| 11 | 30103021 | 250135 | 弯针轴前后套筒 | plug | 1 |
| 12 | 30103010 | | 主轴套筒 | bushing | 1 |
| 13 | 30103019 | | 护针轴前套筒 | bushing | 1 |
| 14 | (30221016) | 255020 | 铜油管 | pipe | 1 |
| 15 | P03005 | | 销 4×8 | pin | 1 |
| 16 | 001006 | | O型圈8.5x1.8 | o ring | 1 |
| 17 | 001008 | | O型圈9x1.8 | o ring | 1 |



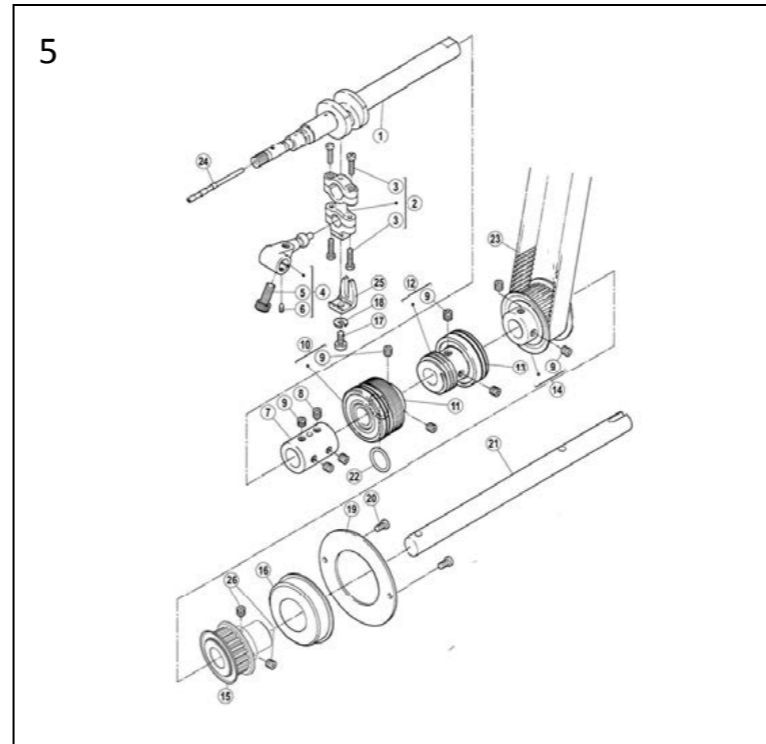
3、罩壳部件 (Cover assemblies)

| 序号 Ref. No | 公司件号 Part No | 参考件号 Ref. Part. no | 名称 | Description | 数量 Number |
|---------------|-----------------|-----------------------|-------------------|--------------------|--------------|
| 1 | s01060 | 7021 | 螺钉M4×10 | screw | 9 |
| 2 | 303600 | | 上盖 (喷漆) | arm cover(top) | 1 |
| 3 | 21022007 | | 油封 | plug | 1 |
| 4 | 20711055 | | 油窗 | Oil Sight Window | 1 |
| 5 | 21022003 | | 油窗垫 | o ring | 1 |
| 6 | 31022010 | | 上盖密封垫 | The head gasket | 1 |
| 7 | 20711212 | | R型线夹8.6 | | 1 |
| 8 | S01002 | | 螺钉 M4×6.5 | screw | 1 |
| 9 | 31122001 | | 机头左盖密封垫 | o ring | 1 |
| 10 | 13837002 | | 商标牌 | plug | 1 |
| 11 | 10122003 | | 油封 | plug | 1 |
| 12 | 303795 | | 机头左盖 (喷漆) | arm cover(rear) | 1 |
| 13 | 301S30002 | 7089 | 左盖盖黄螺钉 | screw | 1 |
| 14 | 31012042 | | 玻璃罩安装板 | glass plate | 1 |
| 15 | 31012029 | | 护罩架 | shield | 1 |
| 16 | 30111003 | 250257 | 有机玻璃罩 | eye guard | 1 |
| 17 | W01002 | 202875 | 垫圈 | sticker | 2 |
| 18 | s01006 | 7009 | 螺钉M3x4.5 | screw | 2 |
| 19 | 20131063 | | 护罩警示牌 | sticker | 1 |
| 20 | W03001 | 210307 | 波形垫圈 | washer | 2 |
| 21 | 301S20001 | | 螺钉 | screw | 1 |
| 22 | 31012012 | | 过线护罩 | three takeup cover | 1 |
| 23 | W02004 | 303335 | 垫圈6 | sticker | 1 |
| 24 | s01060 | 7052 | 护罩螺钉 | screw | 2 |
| 25 | 300951 | | 前门板铰链 | screw | 1 |
| 26 | 30122015 | | 前罩防震垫 | cushion | 2 |
| 27 | 21012018 | | 油封垫 | plug | 1 |
| 28 | 30122015 | | 前罩防尘垫 | plug | 2 |
| 29 | s01002 | 7017 | 螺钉M4x6.5 | screw | 2 |
| 30 | 30127001 | 250051 | 前罩簧 | flat spring | 1 |
| 31 | 30101110 | | JK-8568A-W2-38前门板 | arm cover | 1 |
| 32 | (301s20003) | 250014 | 前罩铰链螺钉 | pin | 1 |
| 33 | (30128002) | 201191 | 弹簧垫圈 | spring | 3 |
| 34 | s01007 | 7023 | 螺钉M4x13.5 | screw | 2 |
| 35 | (30101063) | | 前罩铰链座 | bracket | 1 |
| 36 | (s10006) | 4539 | 螺钉M5x6 | screw | 2 |
| 37 | (301s20002) | 250013 | 前罩铰链座螺钉 | screw | 1 |



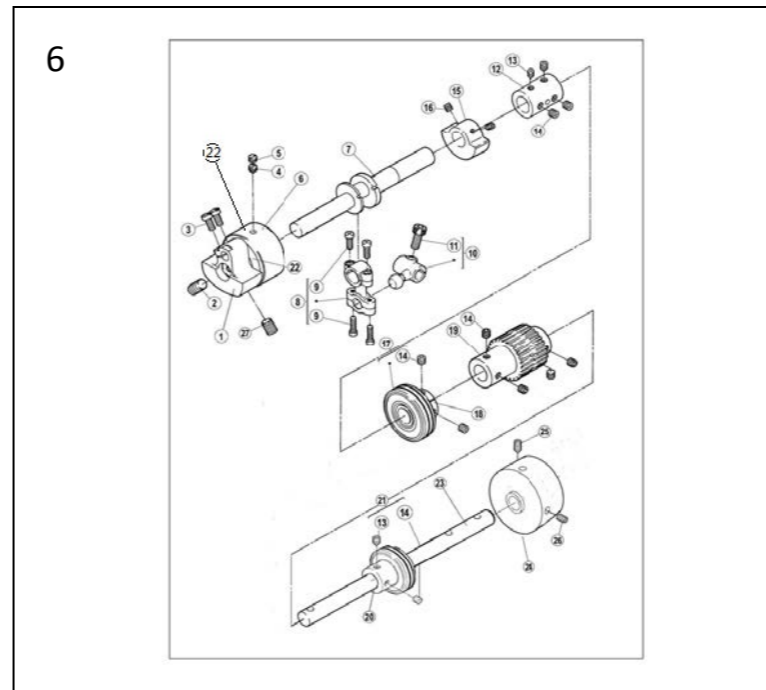
4、缝台部件 (Cloth plate assemblies)

| 序号 Ref. No | 公司件号 Part No | 参考件号 Ref. Part. no | 名称 | Description | 数量 Number |
|---------------|-----------------|-----------------------|-----------|------------------|--------------|
| 1 | 207s11008 | 7021 | 螺钉 M4×12 | screw | 6 |
| 2 | 300137 | 250074-ASD | 右缝台盖 (喷漆) | bed cover(right) | 1 |
| 3 | 30115001 | 250071-91 | 推板 | cover | 1 |
| 4 | 300953 | 250052-BSD | 左缝台盖 (喷漆) | bed cover(left) | 1 |
| 5 | s02003 | 7043 | 螺钉 M4×6 | screw | 1 |
| 6 | (301s20004) | | 侧盖合箱螺钉 | screw | 1 |
| 7 | (30128002) | 201191 | 弹簧垫圈 | spring | 2 |
| 8 | s01005 | 7020 | 螺钉 M4×10 | screw | 2 |
| 9 | (s10001) | | 螺钉M3x4 | screw | 2 |
| 10 | (301s20005) | | 销螺钉 | pin | 1 |
| 11 | (30101112) | | 侧盖合箱 | cover | 1 |
| 12 | (30101111) | | 侧盖 | side cover | 1 |
| 13 | 300952 | | 侧盖组件 (喷漆) | side coverassy | 1 |
| 14 | s01002 | 7017 | 螺钉M4x6.5 | screw | 2 |
| 15 | 31127001 | | 侧前罩簧 | flat spring | 1 |
| 16 | 30122015 | | 前罩防震垫 | cushion | 1 |
| 17 | 30112095 | | 侧前罩簧垫 | flat spring | 1 |
| 18 | S01005 | | 螺钉 | screw | 1 |
| 19 | N01001 | | 螺母M4 | nut | 1 |



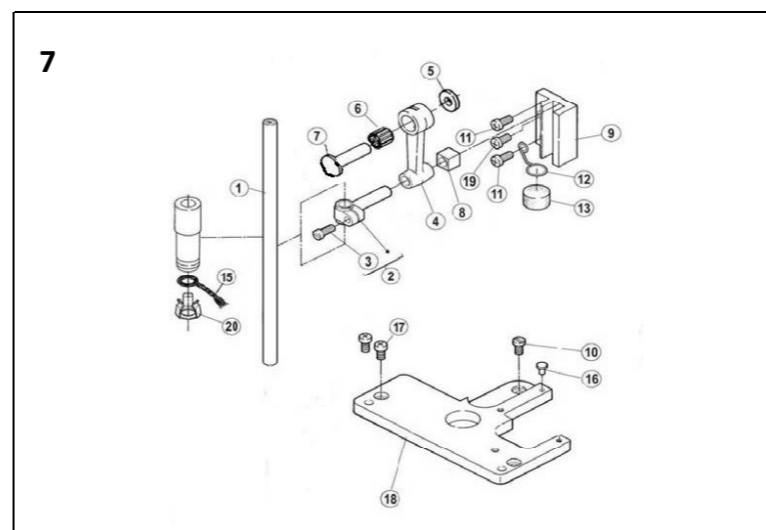
5、下轴部件 (Hook shaft assemblies)

| 序号 Ref. No | 公司件号 Part No | 参考件号 Ref. Part. no | 名称 | Description | 数量 Number |
|---------------|-----------------|-----------------------|-----------------|-----------------|--------------|
| 1 | 400068 | 250501B-91 | 下轴 | crankshaft assy | 1 |
| 2 | 400060 | 2505009-92 | 连杆组件 | connection assy | 1 |
| 3 | (201S20015) | 7015 | 螺钉 M3.5×13 | screw | 4 |
| 4 | 30104002 | 252008 | 下轴曲柄 | crank | 1 |
| 5 | S05002 | 4534 | 螺钉 M6×0.75×15.2 | screw | 1 |
| 6 | S12002 | 4545 | 螺钉 M3×4 | screw | 1 |
| 7 | 30103004 | 250506 | 接轴套 | joint | 1 |
| 8 | S12003 | 4555 | 螺钉 M6×7 | screw | 2 |
| 9 | S10029 | 4547 | 螺钉 M6×7 | screw | 8 |
| 10 | 3012400300 | 250508-91 | 油封轴承 | bearing | 1 |
| 11 | 30103006 | 250508 | 中轴套 | bushing | 1 |
| 12 | 30103008 | 250543 | 轴杆 | bushing | 1 |
| 13 | 3012400400 | | 油封轴承 | bearing | 1 |
| 14 | 3112500100 | 250511-1 | 下轴同步带轮 | gear(lower) | 1 |
| 15 | 30125005 | 250530 | 小同步带轮2 | small gear2 | 1 |
| 16 | 001003 | 250504-91 | 轴承 6304Z | bearing | 1 |
| 17 | 301S11004 | 4019 | 比叉螺钉 | screw | 1 |
| 18 | W02001 | 202286 | M5 垫圈 | washer | 1 |
| 19 | 30108001 | 250514 | 轴承挡圈 | cover | 1 |
| 20 | 207S11007 | 7019 | 螺钉 M4×7.8 | screw | 2 |
| 21 | 31102001 | 250507 | 下后轴 | shaft | 1 |
| 22 | 001001 | 206837 | O型圈 15×2.65 | o ring | 1 |
| 23 | 30135021 | 206050C | 同步带 | timing belt | 1 |
| 24 | 30126001 | 250525 | 调节销 | adjusting bar | 1 |
| 25 | 30109001 | 201074 | 比叉 | guide | 1 |
| 26 | s12005 | | 螺钉M4×4 | screw | 2 |



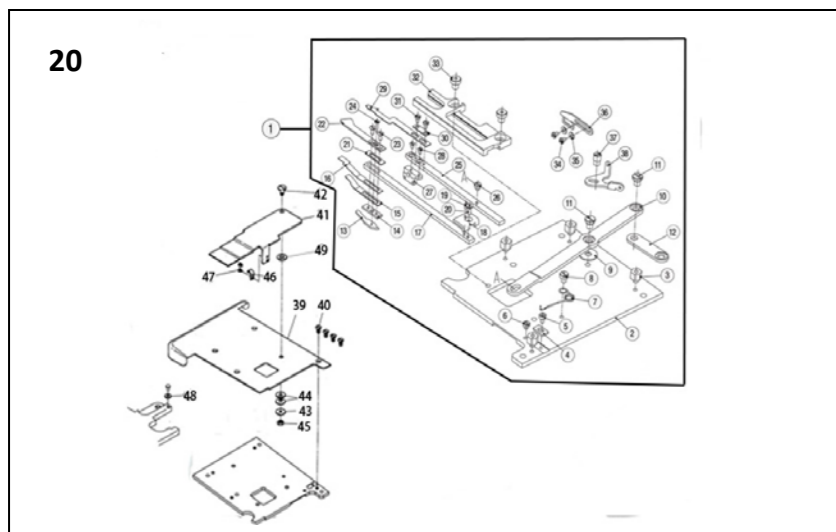
6、上轴部件 (Main shaft assemblies)

| 序号 Ref. No | 公司件号 Part No | 参考件号 Ref. Part. no | 名称 | Description | 数量 Number |
|---------------|-----------------|-----------------------|-----------------|-----------------|--------------|
| 1 | 31104002 | 250526892 | 针杆曲柄 | motion assy | 1 |
| 2 | S10004 | 4592 | 螺钉 M8×1×12 | screw | 1 |
| 3 | S01011 | 7028 | 螺钉 M5×10 | screw | 2 |
| 4 | S08001 | | 螺钉 M6×0.75×3.5 | screw | 1 |
| 5 | S11001 | 7152 | 螺钉 M6×0.75×6 | screw | 2 |
| 6 | 001005 | | 曲柄轴上盖轴 | bushing | 1 |
| 7 | 400065 | 250517A | 连杆组件 | crankshaft | 1 |
| 8 | 400061 | 253500-92 | 侧连杆螺母 | connection assy | 1 |
| 9 | (201S20015) | 7021 | 弯针曲柄 | screw | 4 |
| 10 | 30104006 | 253501A | 螺钉 M6×0.75×15.2 | crank assy | 1 |
| 11 | S05002 | 4534 | 接轴套 | screw | 1 |
| 12 | 30103004 | 250506 | 螺钉 M6×0.75×7 | joint | 1 |
| 13 | S12003 | 4555 | 螺钉 M6×0.75×5 | screw | 3 |
| 14 | S10029 | 4547 | 上轴平衡块 | balance weight | 9 |
| 15 | 30109003 | 250524 | 螺钉 M5×5 | screw | 2 |
| 16 | S10002 | 4514 | 油封轴承 | screw | 2 |
| 17 | 3012400400 | 250529-91 | 轴承套 (短) (粉末冶金)上 | bushing | 1 |
| 18 | 30103107 | 250529 | 轴同步带轮 | bushing | 1 |
| 19 | 30125002 | 250521 | 轴承套 (长) (粉末冶金)油 | gear(upper) | 1 |
| 20 | 30103108 | 250528 | 衬轴承 | bushing | 1 |
| 21 | 3012400400 | 250529-91 | 油封轴承 | bearing | 1 |
| 22 | 30103015 | | 轴承套 | bearing | 1 |
| 23 | 30202004 | | 轴 | shaft | 1 |
| 24 | 31035002 | | 手轮 | pulley | 1 |
| 25 | S12001 | 4556 | 尖端固定螺钉 M6×8 | screw | 1 |
| 26 | S10009 | 4541 | 螺钉 M6×8 | screw | 1 |
| 27 | 301S10004 | | 针杆曲柄螺钉 | screw | 1 |

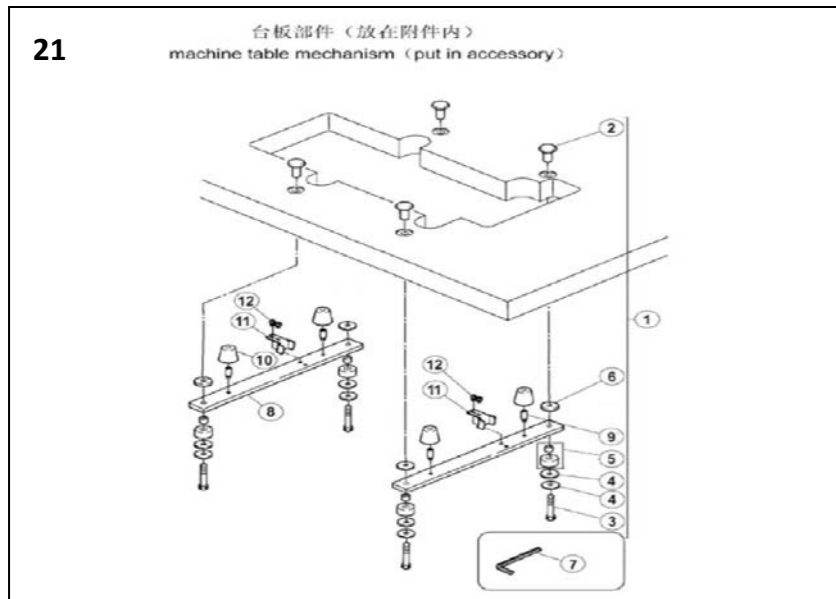


7、针杆部件 (Needle bar assemblies)

| 序号 Ref. No | 公司件号 Part No | 参考件号 Ref. Part. no | 名称 | Description | 数量 Number |
|---------------|-----------------|-----------------------|------------|--------------------|--------------|
| 1 | 30102008 | 251000-91 | 针杆 | needle bar | 1 |
| 2 | 30102009 | 206061 | 针杆乳头 | needle bar pin | 1 |
| 3 | 301S11005 | 5325 | 针杆乳头螺钉 | screw | 1 |
| 4 | 30105005 | 206052 | 针杆连杆 | link/needle bar | 1 |
| 5 | 30128006 | | 垫圈 | washer | 1 |
| 6 | B07001 | 240098 | 轴承 8×12×12 | needle bearing | 1 |
| 7 | 30102010 | 251010A | 连杆轴 | eccentric pin | 1 |
| 8 | 30109004 | 206063 | 连杆滑块 | block | 1 |
| 9 | 30109005 | 206062 | 滑块导座 | guide block/needle | 1 |
| 10 | s01002 | 7082 | 螺钉 M4×6.5 | screw | 1 |
| 11 | 207s11008 | 7021 | 螺钉 M4×12 | screw | 2 |
| 12 | 30127003 | 251009 | 毛毡簧 | spring | 1 |
| 13 | 30123002 | 179040-05 | 毛毡 | felt | 1 |
| 15 | 30123014 | 202176 | 油线 | oil wick | 1 |
| 16 | 30122018 | 240123 | 防震垫 | cushion rubber | 1 |
| 17 | 207S11007 | 7019 | 螺钉 M4×7.8 | screw | 2 |
| 18 | 30109006 | 251007 | 针板座 | bracket | 1 |
| 19 | 207S11007 | 7019 | 螺钉 M4×7.8 | screw | 1 |
| 20 | 30112009 | 206524 | 油线托 | oil wick retainer | 1 |

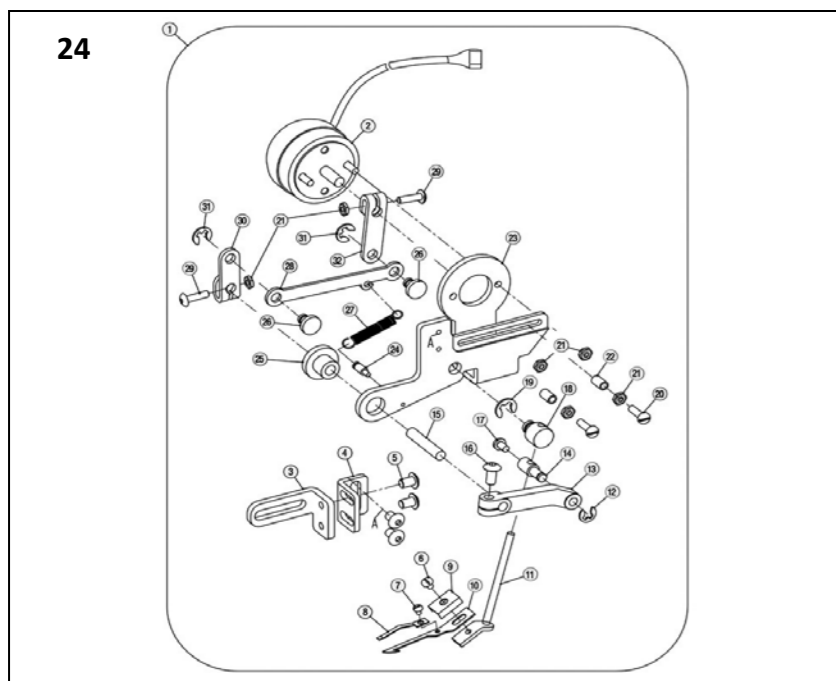


| 序号 Ref. No | 公司件号 Part No | 参考件号 Ref. Part. no | 名称 | Description | 数量 Number |
|---------------|-----------------|-----------------------|----------|---------------|--------------|
| 31 | s01012 | | 螺钉M2.5X4 | Screw | 2 |
| 32 | 30109032 | | 导块 | Screw | 1 |
| 33 | 301s30033 | | 螺钉M5X6 | Screw | 2 |
| 34 | s01012 | | 螺钉M2.5X4 | Screw | 2 |
| 35 | w01012 | | 垫片 | washer | 2 |
| 36 | 30112113 | | 过线 | thread takeup | 1 |
| 37 | 301s20030 | | 过线螺钉 | Screw | 1 |
| 38 | 30113045 | | 过线 | thread takeup | 1 |
| 39 | 304121 | 350003 | 刀盘盖板 | cover | 1 |
| 40 | S02030 | 7043 | 螺钉M3X3.5 | screw | 4 |
| 41 | 304124 | 350004 | 盖板 | cover | 1 |
| 42 | 301S20019 | 7096 | 螺钉 | screw | 2 |
| 43 | 20528006 | 240104 | 垫片 | washer | 1 |
| 44 | 20728003 | 211301 | 碟形垫片 | spring washer | 2 |
| 45 | 205S16004 | 4803 | 螺母 | nut | 1 |
| 46 | 30127036 | 250010 | 压板 | flat spring | 1 |
| 47 | S01021 | 7078 | 螺钉M2.5X3 | screw | 2 |
| 48 | 20528018 | 240220 | 垫片 | washer | 1 |
| 49 | 30112152 | | 缝台垫片 | washer | 1 |



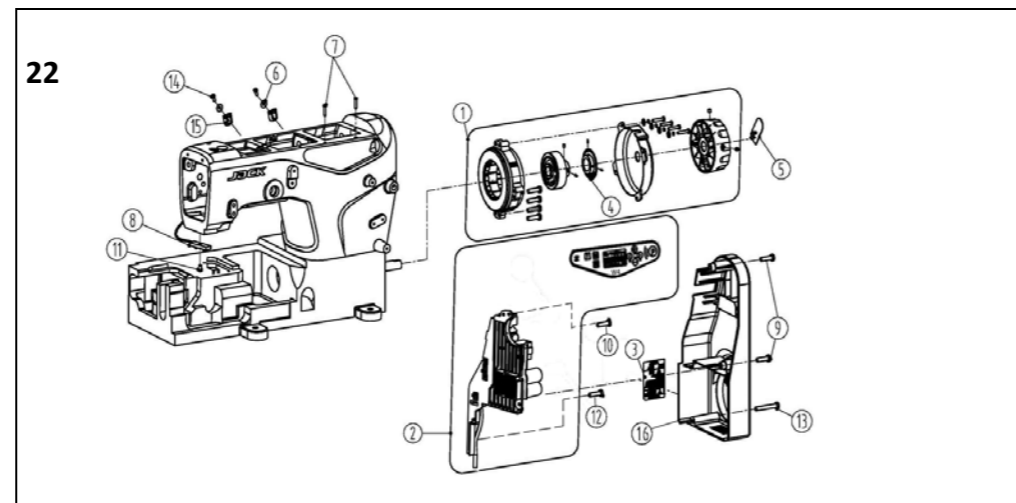
21、油盘托板部件(Oil plate assemblies)

| 序号 Ref. No | 公司件号 Part No | 参考件号 Ref. Part. no | 名称 | Description | 数量 Number |
|---------------|-----------------|-----------------------|------------|----------------------|--------------|
| 1 | 3010103200 | 9048 | 安装螺钉(一套) | screw(set) | 1 |
| 2 | 20131028 | 206336 | 托盘固定螺母 | nut | 4 |
| 3 | 20131027 | 4512 | 托板内六角螺钉 | bolt | 4 |
| 4 | 20131029 | 206337 | 大垫圈 | washer | 8 |
| 5 | 20131030 | 205764 | 防震垫 | rubber cushion | 4 |
| 6 | 30122031 | 205467 | 减震垫圈 | spacer | 4 |
| 7 | 20131056 | 272 | 内六角扳手(5mm) | allen key driver/5mm | 1 |
| 8 | 30112198 | 259000 | 油盘托板 | rest board | 2 |
| 9 | 301S30018 | 7093 | 螺钉 | screw | 4 |
| 10 | 30122029 | 206338 | 油盘减振垫 | rubber cushion | 4 |
| 11 | 30112041 | 206329 | 链条挡板 | treadle chain guide | 2 |
| 12 | S01011 | 7027 | 螺钉 M5×10 | screw | 4 |



20、下剪线部件(knife holder assemblies)

| 序号 Ref. No | 公司件号 Part No | 参考件号 Ref. Part. no | 名称 | Description | 数量 Number |
|---------------|-----------------|-----------------------|---------------|-----------------------|--------------|
| 1 | 3011900300 | | 下切刀组件(新) | knife holder assembly | 1 |
| 2 | 30109035 | | 下切刀刀盘 | bracket | 1 |
| 3 | 301s30044 | | 下切刀刀盘螺钉 | screw | 4 |
| 4 | 30212128 | | 垫片 | washer | 1 |
| 5 | s05047 | | 螺钉M3X4 | screw | 1 |
| 6 | 208s11009 | | 螺钉M3.5X4 | screw | 1 |
| 7 | 30127053 | | 弹簧 | spring | 1 |
| 8 | s01031 | | 螺钉M4X4.7 | screw | 1 |
| 9 | w01090 | | 垫片 | washer | 1 |
| 10 | 30112111 | | 摆杆 | lever | 1 |
| 11 | 301s20018 | | 螺钉M5 | screw | 2 |
| 12 | 30105025 | | 连接板 | link | 1 |
| 13 | 30112156 | | 压板 | flat spring | 1 |
| 14 | 30112157 | | 垫板 | washer | 1 |
| 15 | 30112158 | | 压板 | flat spring | 1 |
| 16 | 30112159 | | 压板 | flat spring | 1 |
| 17 | 30109037 | | 上切刀台 | upper knife lever | 1 |
| 18 | 30112091 | | 缓冲挡板 | screw | 1 |
| 19 | P01031 | | 销3x5 | screw | 1 |
| 20 | s05217 | | 内六角沉头螺钉M3X3.5 | screw | 1 |
| 21 | 30128041 | | 垫片 | washer | 1 |
| 22 | 30119010 | | 上切刀 | upper knife | 1 |
| 23 | s02027 | | 螺钉M2.5X8 | Screw | 2 |
| 24 | s01112 | | 螺钉M2X10 | Screw | 1 |
| 25 | 30109036 | | 下切刀块 | lower knife holder | 1 |
| 26 | 301s30034 | | 螺钉M3X3.5 | Screw | 1 |
| 27 | 30101140 | | 垫块 | Screw | 1 |
| 28 | 207s17004 | | 螺钉M2.5X6 | plug | 2 |
| 29 | 30119006 | | 动刀 | plug | 1 |
| 30 | 30112144 | | 垫片 | washer | 1 |

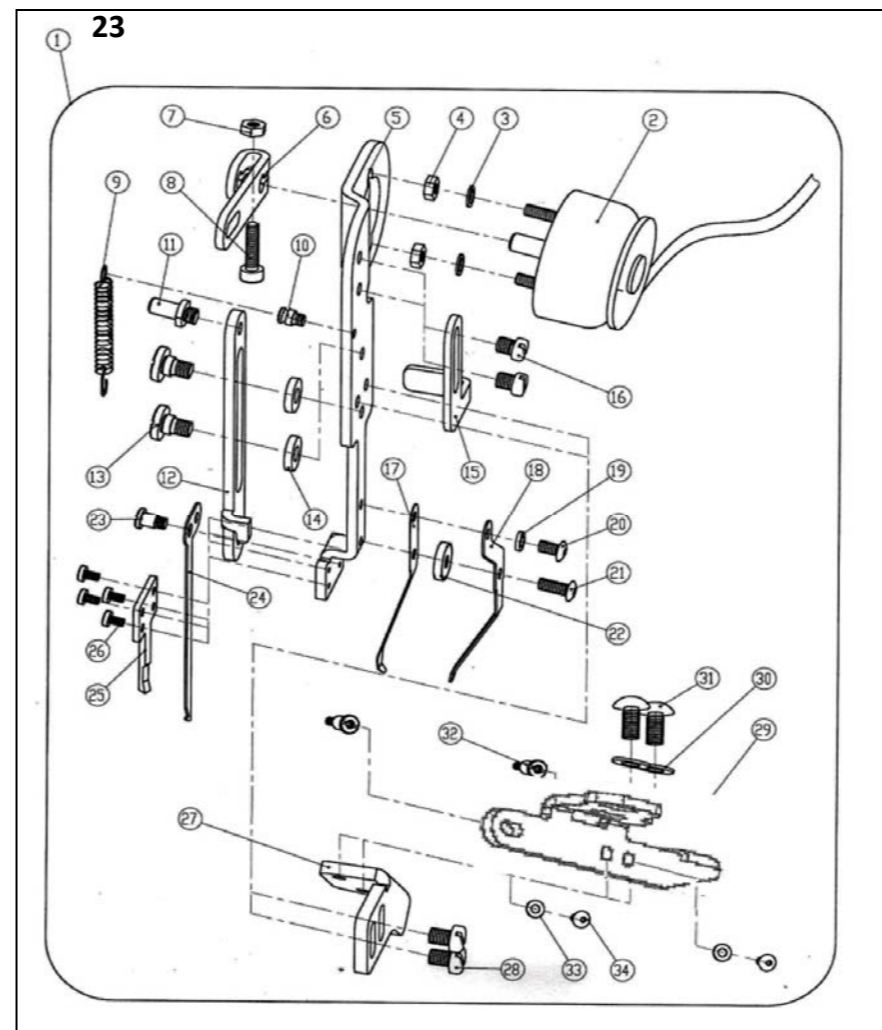


22、电控专用件(specific parts)

| 序号 Ref. No | 公司件号 Part No | 参考件号 Ref. Part. no | 名称 | Description | 数量 Number |
|---------------|-----------------|-----------------------|--------------------|--------------------|--------------|
| 1 | 3113300100 | | 缝缝光电伺服电机 | LED light | 1 |
| 2 | 3113000500 | | W4-2901一体机电控(德麦克斯) | electrical machine | 1 |
| 3 | 20131063 | | 警示牌 | washer | 1 |
| 4 | 95300018 | | 光栅组件 | plug | 1 |
| 5 | 21111018 | | 塑料logo | logo | 1 |
| 6 | W01001 | | 垫片 | washer | 2 |
| 7 | 310s17001 | | 螺钉 | screw | 2 |
| 8 | 3103000300 | | LED灯 | LED light | 1 |
| 9 | s05004 | | 螺钉M5X10 | screw | 2 |
| 10 | s05003 | | 螺钉M5X10 | screw | 1 |
| 11 | S05190 | | 螺钉M3X6 | screw | 1 |
| 12 | S05068 | | 螺钉M5X20 | screw | 1 |
| 13 | s05003 | | 螺钉M5X10 | screw | 1 |
| 14 | 207S11007 | | 螺钉M5X5.5 | screw | 2 |
| 15 | 20711212 | | 线夹 | clip | 2 |
| 16 | 31111001 | | W4-0203电控罩壳 | | 1 |

24、拨线部件(Dial line assemblies)

| 序号 Ref. No | 公司件号 Part No | 参考件号 Ref. Part. no | 名称 | Description | 数量 Number |
|---------------|-----------------|-----------------------|---------------|-----------------------|--------------|
| 1 | 3011901100 | | 拨线器组件 | thread wiper assembly | 1 |
| 2 | 3013004000 | | 电磁铁组件 | solenoid | 1 |
| 3 | 30112205 | | 固定板 | bracket | 1 |
| 4 | 30112206 | | 固定板 | bracket | 1 |
| 5 | S05303 | | 内六角平圆头螺钉M4X6 | screw | 4 |
| 6 | S01022 | | 螺钉M3X4 | screw | 1 |
| 7 | S01097 | | 螺钉M2X2 | screw | 1 |
| 8 | 30112204 | | 弹簧片 | presser plat | 1 |
| 9 | 30112129 | | 压板 | bracket | 1 |
| 10 | 30112203 | | 勾线片 | hook plate | 1 |
| 11 | 30102093 | | 勾刀杆 | hook rod | 1 |
| 12 | H05002 | | 卡簧 | ring | 1 |
| 13 | 30101142 | | 曲柄 | crank | 1 |
| 14 | 30126030 | | 销 | screw | 1 |
| 15 | 30102052 | | 抽销 | screw | 1 |
| 16 | S05304 | | 内六角平圆头螺钉M4X8 | screw | 1 |
| 17 | S01027 | | 螺钉M3X6 | screw | 1 |
| 18 | 30126033 | | 转动销 | screw | 1 |
| 19 | H05003 | | 卡簧 | ring | 1 |
| 20 | S01110 | | 螺钉M3X10 | screw | 2 |
| 21 | N01013 | | 螺母M3 | nut | 6 |
| 22 | 30122102 | | 橡胶套 | plug | 2 |
| 23 | 30112200 | | 安装板 | bracket | 1 |
| 24 | 301S01005 | | 螺钉 | screw | 1 |
| 25 | 30103067 | | 铜套 | bushing | 1 |
| 26 | 30126032 | | 轴位销 | screw | 1 |
| 27 | 30127061 | | 弹簧 | ring | 1 |
| 28 | 30105029 | | 连杆 | lever | 1 |
| 29 | S05302 | | 内六角平圆头螺钉M3X12 | screw | 2 |
| 30 | 30104035 | | 曲柄 | crank | 2 |
| 31 | H05012 | | 卡簧 | ring | 1 |
| 32 | 30104034 | | 曲柄 | crank | 1 |



25、松线部件UT(一)(solenoid assemblies)

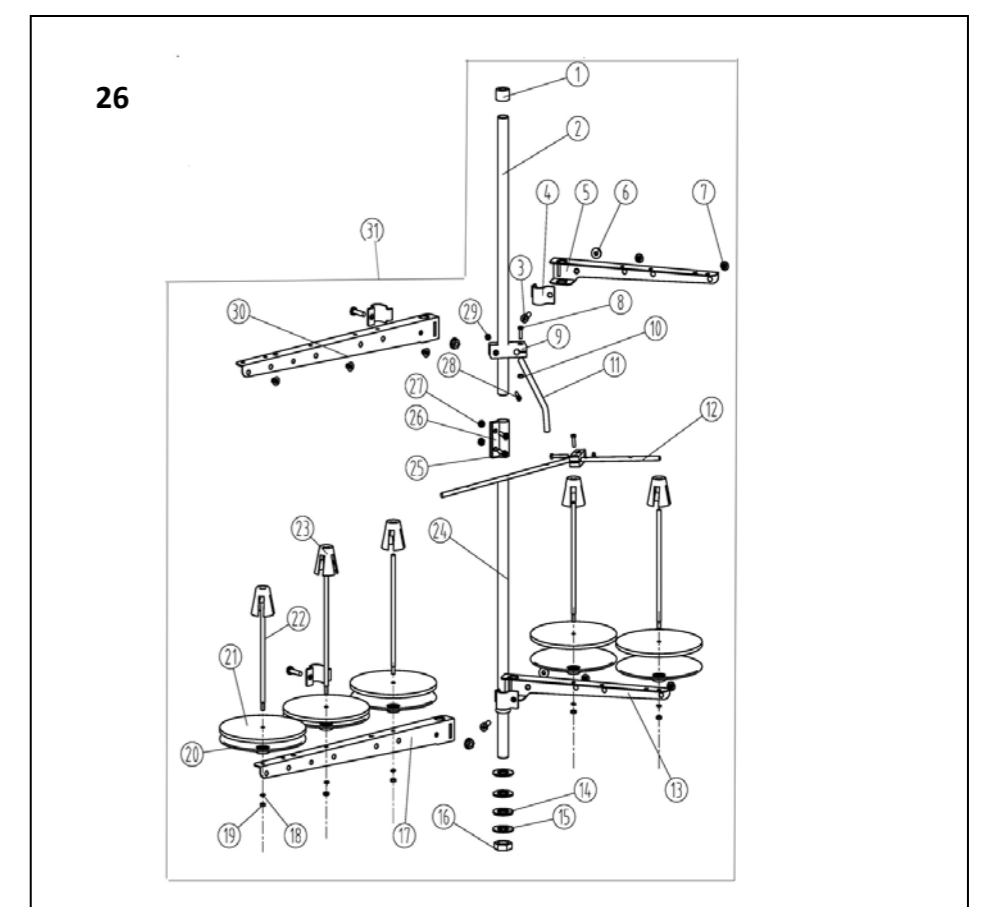
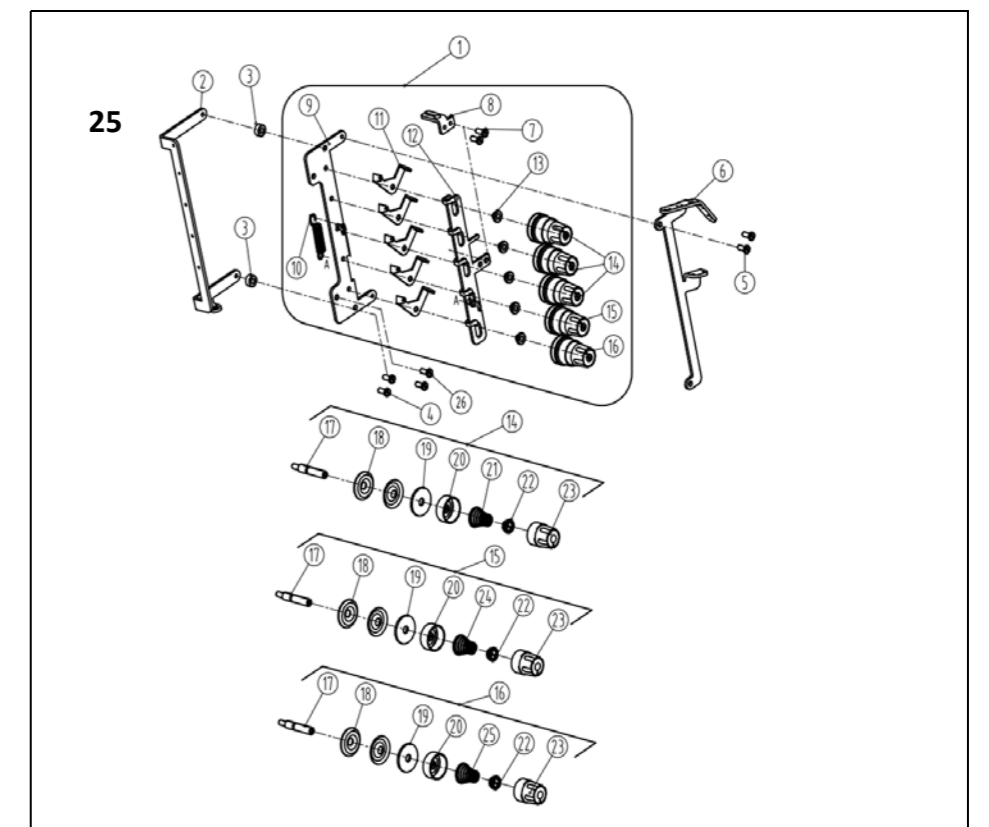
| 序号 Ref. No | 公司件号 Part No | 参考件号 Ref. Part. no | 名称 | Description | 数量 Number |
|---------------|-----------------|-----------------------|-----------|--------------------------------|--------------|
| 1 | 3101300700 | 201068 | 尖线器 | tension | 1 |
| 2 | 31013010 | | 松线架 | Loose thread stand | 1 |
| 3 | 31009004 | | 松线垫块 | block | 2 |
| 4 | S04019 | | 螺钉M4×12 | screw | 2 |
| 5 | S04010 | | 螺钉M4×5.5 | screw | 2 |
| 6 | 31013022 | | 尖线器过线 | Loose line board | 1 |
| 7 | S04010 | | 螺钉M4×5.5 | screw | 2 |
| 8 | 31012048 | | 松线拉板 | Loose line board | 1 |
| 9 | 31013007 | | 过线架 | Loose line board | 1 |
| 10 | 30127010 | | 调节弹簧 | reset spring | 1 |
| 11 | 30113007 | | 二孔过线板 | thread guide | 5 |
| 12 | 31013008 | | 松线板 | Loose line board | 1 |
| 13 | 30103041 | 206202 | 调节套 | spacer | 5 |
| 14 | 3011300400 | 254010A9U | 调线组件(强) | tension spring | 3 |
| 15 | 3011300500 | 254010B9U | 调线组件(中) | tension spring assembly | 1 |
| 16 | 3011300600 | 254010C9U | 调线组件(弱) | tension spring assembly(Light) | 1 |
| 17 | 301S30010 | 001817-2A | 尖线器 | screw stud | 1 |
| 18 | 30128016 | 210319 | 尖线片 | tension disc | 2 |
| 19 | 30123027 | | 松线尖线片垫 | felt | 1 |
| 20 | 30111005 | 208450-UA | 调压止动套 | cup | 1 |
| 21 | 30127011 | 301037 | 调压簧(强) | spring(heavy) | 3 |
| 22 | 30111006 | 208448 | 调压止动套 | ratchet | 1 |
| 23 | 301S16006 | 208447-UA | 调压螺母 | nut | 1 |
| 24 | 30127012 | 201086 | 调压簧(中) | spring(medium) | 1 |
| 25 | 30127013 | 201068 | 调压簧(弱) | spring(light) | 1 |
| 26 | 207s11007 | | 螺钉 M4×7.8 | screw | 2 |

26、线架部件(Thread spool assemblies)

| 序号 Ref. No | 公司件号 Part No | 参考件号 Ref. Part. no | 名称 | Description | 数量 Number |
|---------------|-----------------|-----------------------|----------|---------------------------|--------------|
| 1 | 20131019 | | 棒帽 | Rod Cap | 1 |
| 2 | 20131001 | | 上管 | Upper thread column | 1 |
| 3 | 20131020 | | 导线环螺钉 | Screw | 4 |
| 4 | 20131016 | | 导线环 | Thread spool tray bracket | 1 |
| 5 | 20131016 | | 导线架 | Thread spool tray bracket | 1 |
| 6 | 201S16006 | | 导线环螺母 | Thread guide hook nut | 4 |
| 7 | 20131018 | | 过线环 | Thread guide hook | 2 |
| 8 | 20131021 | | 棒架螺钉 | Screw | 5 |
| 9 | 20131009 | | 棒架 | Clamp plate | 1 |
| 10 | 201S16004 | | 螺母 | Nut | 4 |
| 11 | 20131011 | | 导线棒 | Thread guide bar | 1 |
| 12 | 30113019 | | 过线棒 | Thread guide | 4 |
| 13 | 20131017 | | 托线架 | Thread spool tray bracket | 1 |
| 14 | 20122049 | | 防震垫 | Plate dog link washer | 2 |
| 15 | 20128025 | | 下管垫圈 | Lower washer | 2 |
| 16 | 201S16005 | | 螺母 | Nut | 1 |
| 17 | 20131004 | | 托线架 | Thread spool tray bracket | 1 |
| 18 | 20128018 | | 垫圈 | Washer | 5 |
| 19 | 201S16004 | | 螺母 | Nut | 4 |
| 20 | 20131007 | | 线盘 | Spool tray | 5 |
| 21 | 20131010 | | 线盘垫 | Spool tray cushioning | 5 |
| 22 | 20131006 | | 线托棒 | Spool pin | 5 |
| 23 | 20131008 | | 线盘定位套 | Spool cushion | 5 |
| 24 | 20131004 | | 托线架 | Thread spool tray bracket | 1 |
| 25 | S04050 | | 螺钉 M5×15 | Screw | 2 |
| 26 | 20131003 | | 套 | Bushing | 1 |
| 27 | N01030 | | 套螺母 | Nut | 2 |
| 28 | 20131022 | | 棒架螺钉 | Screw | 2 |
| 29 | 201S16004 | | 螺母 | Nut | 4 |
| 30 | 20131015 | | 导线架 | Threadspooltray bracket | 1 |
| 31 | 2113100500 | | 线架组件 | Thread stand component | 1 |

23、上剪线部件(knife holder assemblies)

| 序号 Ref. No | 公司件号 Part No | 参考件号 Ref. Part. no | 名称 | Description | 数量 Number |
|---------------|-----------------|-----------------------|----------|-------------------|--------------|
| 1 | 3011900400 | | 上切刀组件 | knife holder | 1 |
| 2 | 3013004000 | | 电磁铁组件 | solenoid assembly | 1 |
| 3 | W02025 | | 弹性垫圈 | washer | 2 |
| 4 | N01013 | | 螺母 | nut | 2 |
| 5 | 30112118 | | 安装板 | install plat | 1 |
| 6 | 30112119 | | 铁架板 | plat | 1 |
| 7 | N01013 | | 螺母 | nut | 1 |
| 8 | S05014 | | 螺钉 | screw | 1 |
| 9 | 30127039 | | 弹簧 | spring | 1 |
| 10 | 301S30036 | | 螺钉 | screw | 1 |
| 11 | 301S30037 | | 螺钉 | screw | 1 |
| 12 | 30112120 | | 滑板 | plat | 1 |
| 13 | 301S20021 | | 螺钉 | screw | 2 |
| 14 | 30112121 | | 垫片 | washer | 2 |
| 15 | 30112122 | | 限位板 | plat | 1 |
| 16 | S01087 | | 螺钉M0.5X4 | screw | 2 |
| 17 | 30112123 | | 压片一 | presser plat | 1 |
| 18 | 30112124 | | 压片二 | presser plat | 1 |
| 19 | W01005 | | 垫片 | washer | 1 |
| 20 | 301S30038 | | 螺钉 | screw | 1 |
| 21 | 301S30039 | | 螺钉 | screw | 1 |
| 22 | 301S16014 | | 调节螺母 | nut | 1 |
| 23 | 301S20022 | | 螺钉 | screw | 1 |
| 24 | 30119008 | | 动刀 | plat | 1 |
| 25 | 30119009 | | 切刀 | thread wiper | 1 |
| 26 | S01088 | | 螺钉M2X3.5 | screw | 4 |
| 27 | 30112125 | | 安装板 | install plat | 1 |
| 28 | S01089 | | 螺钉M4X5.5 | screw | 2 |
| 29 | 30112126 | | 安装板 | install plat | 1 |
| 30 | W01006 | | 垫片 | washer | 2 |
| 31 | S05304 | | 螺钉 | screw | 2 |
| 32 | 301S30041 | | 螺钉 | screw | 2 |
| 33 | W01006 | | 垫片 | washer | 2 |
| 34 | S05304 | | 螺钉 | screw | 2 |



杰克 W4 电脑一体机操作手册

- 安全须知
- 在产品出厂前，请仔细阅读《操作手册》及所附配的连接图及接线图。
- 本产品由接受过专业培训的人员安装及维护。

第1章 产品安装

1.1 产品规格

Table with 4 columns: 型号, 系列, 电源电压, AC 220V±2% V

1.2 接口板的位置

将机箱板及机壳安装在机箱板安装槽的槽面上，应确保牢固固定。→ 所示，连接好，请确保板头盖盖紧。



① 防止静电损坏：② 防止静电损坏：③ 防止静电损坏

必须正确安装板头盖，防止静电损坏。插入板头盖时请小心，插入方向为箭头所指方向。



1.3 接线与接地

必须做好接地线的施工，请由合格的电气人员进行施工。产品通电及投入使用前，必须将机箱板 AC 输入端的安全可靠的接地，系统的接地线为铜线，接地线必须使用铜质导线或铜质导线，以保证安全使用。并防止出现静电现象。

① 所有电源线、信号线、接地线必须用不小于 2.5mm² 的铜导线连接，以确保接地良好。

第2章 操作面板使用说明

操作面板工作正常，操作面板的触摸屏将提供准确的触摸式、点触式、以及按压、滑动、旋转、拖拽等触摸操作。

操作面板上的图标及按钮请参考以下说明。

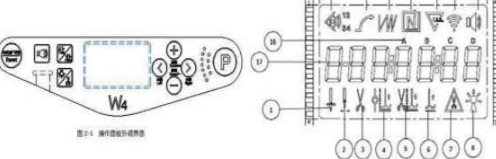


Table with 6 columns: 图标, 名称, 说明, 图标, 名称, 说明

2.1 操作面板的图标说明

Table with 3 columns: 图标, 名称, 说明

2.2 复合触摸说明

Table with 3 columns: 序号, 名称, 说明

第3章 系统参数设置说明

3.1 参数模式

- 1. 将触摸屏、按 F1 键进入参数模式。
2. 按 F2 键退出参数模式。
3. 长按 F2 键 3 秒以上可进入工厂设置。

Table with 4 columns: 参数编号, 参数范围, 出厂值, 参数说明

Table with 4 columns: 代码, 名称, 说明, 代码, 名称, 说明

3.2 监控参数表

Table with 4 columns: 参数编号, 参数名称, 参数编号, 参数名称

3.3 安全参数表

Table with 3 columns: 报警代码, 代码含义, 解决方法

3.4 故障代码表

系统出现报警或故障，请参考如下说明：

Table with 3 columns: 报警代码, 报警说明, 解决方法

第4章 脚踏板灵敏度调整

脚踏板动作灵敏度调整 (13# 号参数) 开始，请向触摸屏 (13# 号参数) 开始调整，调整脚踏板 (13# 号参数) 开始。

- 1. 脚踏板灵敏度调整 (13# 号参数) 开始，请向触摸屏 (13# 号参数) 开始调整。
2. 脚踏板灵敏度调整 (13# 号参数) 开始，请向触摸屏 (13# 号参数) 开始调整。

脚踏板灵敏度调整 (13# 号参数) 开始，请向触摸屏 (13# 号参数) 开始调整。脚踏板灵敏度调整 (13# 号参数) 开始。

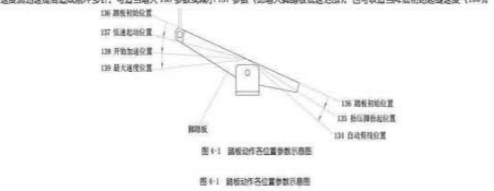


图 4-1 脚踏板灵敏度调整示意图

杰克 W4 电脑一体机操作手册

安全须知

- 在产品出厂前，请仔细阅读《操作手册》及所附配的连接图及接线图。
- 本产品由接受过专业培训的人员安装及维护。
- 请严格按照产品规格书，以免产生安全隐患导致人身伤害或财产损失。

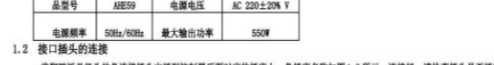
第1章 产品安装

1.1 产品规格

Table with 4 columns: 型号, 系列, 电源电压, AC 220V±2% V

1.2 接口板的位置

将机箱板及机壳安装在机箱板安装槽的槽面上，应确保牢固固定。→ 所示，连接好，请确保板头盖盖紧。



① 防止静电损坏：② 防止静电损坏：③ 防止静电损坏

必须正确安装板头盖，防止静电损坏。插入板头盖时请小心，插入方向为箭头所指方向。



1.3 接线与接地

必须做好接地线的施工，请由合格的电气人员进行施工。产品通电及投入使用前，必须将机箱板 AC 输入端的安全可靠的接地，系统的接地线为铜线，接地线必须使用铜质导线或铜质导线，以保证安全使用。并防止出现静电现象。

① 所有电源线、信号线、接地线必须用不小于 2.5mm² 的铜导线连接，以确保接地良好。

第2章 操作面板使用说明

操作面板工作正常，操作面板的触摸屏将提供准确的触摸式、点触式、以及按压、滑动、旋转、拖拽等触摸操作。

操作面板上的图标及按钮请参考以下说明。

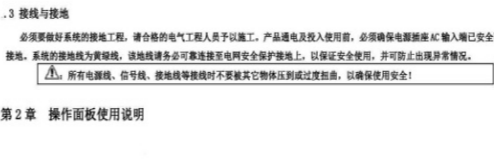


Table with 6 columns: 图标, 名称, 说明, 图标, 名称, 说明

2.1 操作面板的图标说明

Table with 3 columns: 图标, 名称, 说明

2.2 复合触摸说明

Table with 3 columns: 序号, 名称, 说明

第2章 操作面板的图标说明

操作面板工作正常，操作面板的触摸屏将提供准确的触摸式、点触式、以及按压、滑动、旋转、拖拽等触摸操作。

- 1. 将触摸屏、按 F1 键进入参数模式。
2. 按 F2 键退出参数模式。
3. 长按 F2 键 3 秒以上可进入工厂设置。

Table with 4 columns: 参数编号, 参数范围, 出厂值, 参数说明

第3章 系统参数设置说明

3.1 参数模式

- 1. 将触摸屏、按 F1 键进入参数模式。
2. 按 F2 键退出参数模式。
3. 长按 F2 键 3 秒以上可进入工厂设置。

Table with 4 columns: 参数编号, 参数范围, 出厂值, 参数说明

3.2 监控参数表

Table with 4 columns: 参数编号, 参数名称, 参数编号, 参数名称

3.3 安全参数表

Table with 3 columns: 报警代码, 代码含义, 解决方法

3.4 故障代码表

系统出现报警或故障，请参考如下说明：

Table with 3 columns: 报警代码, 报警说明, 解决方法

杰克 W4 电脑一体机操作手册

安全须知

- 在产品出厂前，请仔细阅读《操作手册》及所附配的连接图及接线图。
- 本产品由接受过专业培训的人员安装及维护。
- 请严格按照产品规格书，以免产生安全隐患导致人身伤害或财产损失。

第1章 产品安装

1.1 产品规格

Table with 4 columns: 型号, 系列, 电源电压, AC 220V±2% V

1.2 接口板的位置

将机箱板及机壳安装在机箱板安装槽的槽面上，应确保牢固固定。→ 所示，连接好，请确保板头盖盖紧。



① 防止静电损坏：② 防止静电损坏：③ 防止静电损坏

必须正确安装板头盖，防止静电损坏。插入板头盖时请小心，插入方向为箭头所指方向。



1.3 接线与接地

必须做好接地线的施工，请由合格的电气人员进行施工。产品通电及投入使用前，必须将机箱板 AC 输入端的安全可靠的接地，系统的接地线为铜线，接地线必须使用铜质导线或铜质导线，以保证安全使用。并防止出现静电现象。

① 所有电源线、信号线、接地线必须用不小于 2.5mm² 的铜导线连接，以确保接地良好。

第2章 操作面板使用说明

操作面板工作正常，操作面板的触摸屏将提供准确的触摸式、点触式、以及按压、滑动、旋转、拖拽等触摸操作。

操作面板上的图标及按钮请参考以下说明。



Table with 6 columns: 图标, 名称, 说明, 图标, 名称, 说明

2.1 操作面板的图标说明

Table with 3 columns: 图标, 名称, 说明

2.2 复合触摸说明

Table with 3 columns: 序号, 名称, 说明

第3章 系统参数设置说明

3.1 参数模式

- 1. 将触摸屏、按 F1 键进入参数模式。
2. 按 F2 键退出参数模式。
3. 长按 F2 键 3 秒以上可进入工厂设置。

Table with 4 columns: 参数编号, 参数范围, 出厂值, 参数说明

3.2 监控参数表

Table with 4 columns: 参数编号, 参数名称, 参数编号, 参数名称

3.3 安全参数表

Table with 3 columns: 报警代码, 代码含义, 解决方法

3.4 故障代码表

系统出现报警或故障，请参考如下说明：

Table with 3 columns: 报警代码, 报警说明, 解决方法

JACK 杰克

快速服务 100%

缝缝机 Interlock Sewing Machine

W4系列 W4 Series

产品使用说明书 Product Users' Manual

使用说明和零件样本下载地址:

PLEASE DOWN LOAD THE MANUAL AND SPARE PARTS FROM THE FOLLOWING WEBSITE:
 ÇAŦIÇA EİAââ âEâE ÇâEÛâââÇE ââ×U ÇâEÛEââ âE ÇââââU ÇâEÇââ;
 POR FAVOR DESCARGAR EL MANUAL Y LIBRO DE PARTES Y REPUESTOS LO SIGUIENTE EN SITIO WEB:

Пожалуйста, загрузите инструкцию по эксплуатации и деталировку (список запасных частей) со следующего вебсайта:
 http://download.chinajack.com

产品标准代号: Q/TK 007-2017

Standard code of the products: Q/TK 007-2017

安全须知

对于缝制机本身各种装置,我们充分考虑到它的安全性。请遵照基本的操作方法,安全的进行工作。
 ● 除非为保证安全所设置的装置,零件的情况下使用,是非常危险的,否则不要拆卸或使用。
 ● 拆卸或安装零件,请不要在缝纫机台板上放置工具及缝纫时不必要的物品。
 ● 在对缝纫机进行检修、修理、清洗等维护作业时,请关掉电源开关,并将脚踏板从底座上取下,并确认脚踏板的踏板不会转动之后,再进行操作。

OBSERVE THESE SAFETY PRECAUTIONS

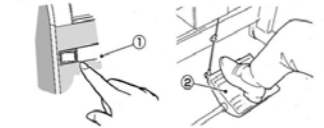
Though We takes the most care to produce safe sewing machines and devices, operators should follow these basic safety rules.
 ● To prevent accidents, do not remove safety devices or parts while operating the machine.
 ● Do not touch tools or other unnecessary objects on the machine table while operating the machine.
 ● Always turn off the power, unplug the machine and then make sure that the machine does not run by pressing the pedal before performing any maintenance, such as checking, repairing, cleaning, etc.

注意

使用离合式马达的情况下,在关掉电源后回弹性作用会继续旋转,这时如不注意脚踏板的踏板时,缝纫机会突然动作,这是很危险的,请在关掉电源后,勿碰脚踏板的踏板,直至缝纫机完全停下来为止。

Caution

A clutch motor keeps on running for a while by inertia after turning off the power suddenly. If the machine pedal is stepped on inadvertently, it is dangerous as the machine will start running unexpectedly. Keeping one's hand on the pedal until the machine comes to a stop after turning off power is advised.



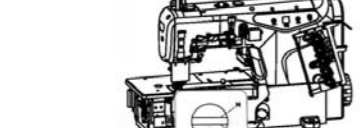
- 在离开缝纫机时,务必请关掉电源。
- 带电时请勿触及电源。
- 为了总是安全地,运转良好的使用缝纫机,白天的点检是不可缺少的,请注意。
- Turn off the power before taking the machine table.
- In the event of a power failure, be sure to turn off the power.
- Check that the machine is securely grounded.

供油

加油量是使油面处于H线与L线之间为好。当油面低于L线时,就要及时补充机油。机油请使用杰克公司指定的(JACK HIGH SPEED SEWING MACHINE OIL) (ISO粘度VG22规格)。

Lubrication

After filling the oil pan, the oil level should be between H and L lines. Add oil when the oil level reaches or goes below L line. Note: Use Jack-designated oil (JACK HIGH SPEED SEWING MACHINE OIL) (ISO VG22).

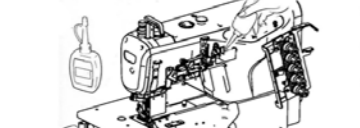


给HR装置供油

为了阻止布纤维或线被切断,请在穿线时设置供油。注: 机油请使用本公司指定的小剂油。[请参照日本JUNON CARBIDE (株)的XCL-45(10)]

Filling the HR device with silicon oil

Fill the device with oil before it is too low in order to prevent needle breakage and fabric damage. Note: Use recommended silicon oil (JUNON CARBIDE CORPORATION) UCCL-45(10)



穿线的方法

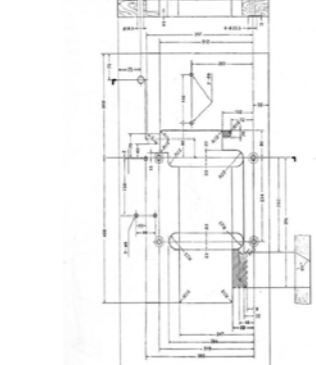
- 1) 请旋起护眼板, 打开机盖 (3处)。
- 2) 抬起穿针线架。
- 3) 把机台上原有的线与缝线用线棍拴在一起。
- 4) 按下穿针线架, 弯针线架回到原位。
- 5) 针线 将针线拉到针眼前, 剪掉线头再次穿好针线。
- 6) 弯针线, 上装饰线盖到引出接头处来看, 用剪刀剪开接头, 剪齐。

Threading

- 1) Open the eye guard and three covers.
- 2) Take up the bracket.

台板加工图

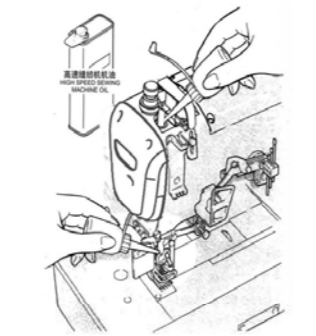
Schematic diagram to the machine table
 请参照下图进行台板的加工
 Cut the referring the diagram



手动给油 Manual lubrication

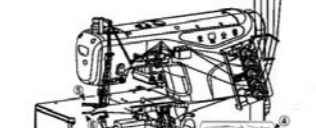
手动给油是在缝纫机刚开始使用时,或相当一段时间重新拆开使用时,请给针头加油。
 机油请使用本公司指定的 (HIGH SPEED SEWING MACHINE OIL) (ISO粘度与VG22相同)。

Supply 2 or 3 drops of oil by hand when the machine is used for the first time or has been left unused for sometime. Note: Use Jack-designated oil (HIGH SPEED SEWING MACHINE OIL) recommended for ISO VG22.



- 3) Knot the preset thread and the thread being used together to thread the machine.
- 4) Press down the bracket after threading. The looper thread take-up comes back.
- 5) Needle thread. Trim the knots off neatly before passing through the eye of the needle to thread.
- 6) Looper thread, Top cover thread. Trim the knots off neatly after passing through the eye of the looper.

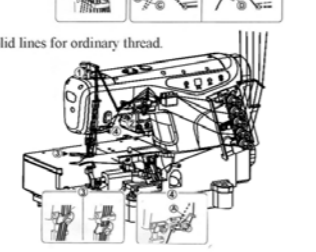
若机上原来没有线,请参照穿线图正确进行穿线。Be sure to thread the machine correctly by referring to the threading diagram.



穿线图 (5针, 3针用) Threading diagram

- 1) 若使用棉质大的线时, 为最佳的方向。(通常为实际方向) Broken lines A) For more stretchable thread
- 2) 若使用线太粗时, 用小的线穿针时, 为最佳的方向。(通常为实际方向) If the top cover thread is too coarse when lined up the top cover thread is not too coarse after thread with broken line B) Use broken C) If the top cover thread is too light use broken line D)
- 3) 穿线大的线时 For more stretchable thread
- 4) 穿线小的线时 For less stretchable thread
- 5) 若使用棉质大的线时, 为最佳的方向。(通常为实际方向) Broken lines E) For more stretchable thread
- 6) 若使用棉质小的线时, 为最佳的方向。(通常为实际方向) Broken lines F) For less stretchable thread

Solid lines for ordinary thread



杰克缝纫机

JACK SEWING MACHINE

HTTP://WWW.CHINAJACK.COM

杰克缝纫机股份有限公司 JACK SEWING MACHINE CO.,LTD.

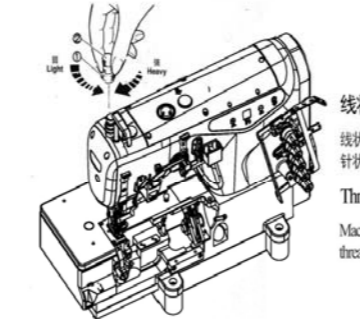
- 公司地址 (Address of Company): 台州市椒江区机场南路十五号 No.15 W4 Airport South, Jiaojiang District Taizhou City, Zhejiang, P.R.C 邮编 (Zip Code): 318000
- 国内销售部 (Domestic Trade Department): 电话 (TEL): 0086-0576-88177788 88177789 传真 (FAX): 0086-0576-88177758
- 国际贸易部 (International Trade Department): 电话 (TEL): 0086-0576-88177782 88177774 传真 (FAX): 0086-0576-88177787
- 免费售后服务电话: 400-8576858 http://www.chinajack.com

● 资料如有更改,恕不另行通知,以实物为准。
 You will be not informed if the file has been revised. Please set sample as standard.
 2019年1月版

压脚压力调节

压脚压力的调节是松开螺帽①和旋转螺柱②来进行的,在旋紧螺柱时脚踏板的内部,需要调整一些为好。

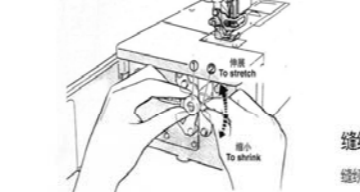
Adjusting the presser foot pressure
 Loosen adjusting (1) nut and turn adjusting screw (2) to adjust the presser foot pressure. It should be as tight as possible, yet be sufficient to obtain the proper stitch formation.



差动比的调节

差动比是通过松开螺帽①后,把调节杆②上下移动来进行调节的,调节后再拧紧螺帽①。

Adjusting the diff feed ratio
 Loosen nut (1) and move the lever up (2) and down to the correct differential feed ratio then tighten nut (1)



针脚长度的调节

原在调节按钮,旋转手轮,针距调节按钮会前进更深处,这时边按在针距调节按钮,边转动手轮,使校准标记对准所需差动数值,针脚长度调节。注:针脚长度的调节必须在调节差动比之后进行。

Adjusting the stitch length

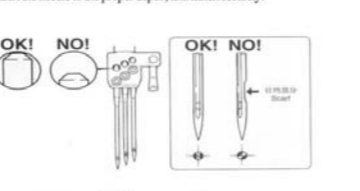
While pressing the push button turn the handwheel to seek the position at which the push button goes further into the depth. Then keeping the button pressed turn the handwheel and set the desired scale to the aligning mark. Note: Stitch length adjustment must only be made after the differential feed ratio has been changed.

换针

1. 准确辨认针的前后,请将针包向着后方,即向操作者进行安装。
2. 针要穿到眼睛孔的最深处。

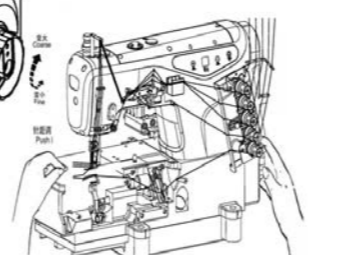
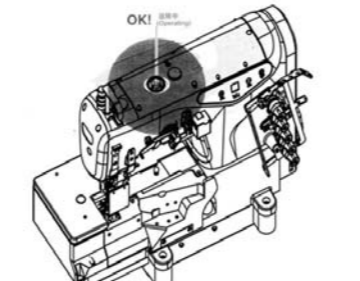
Replacing the needle

1. Check the needle carefully to see that the scarf is turned to the rear of the machine.
2. Insert the needle to the proper depth, and fixen securely.



检查机油的循环

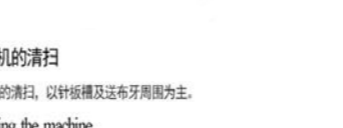
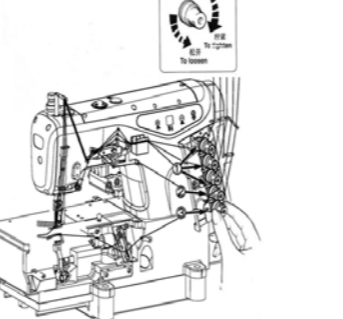
Cleaning the oil circulation



线状态的调节

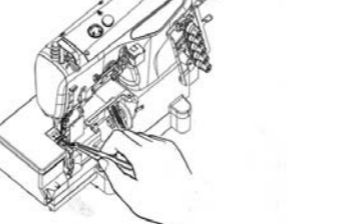
线状态的调节是用针线状态螺帽①,上装饰线状态螺帽②,下针线状态螺帽③来进行调节。

Thread tension
 Make tension adjustments with the needle thread lock (1) top cover thread lock (2) and looper thread lock (3)



缝纫机的清扫

缝纫机的清扫,以针板及送布牙周围为主。



油过滤器的检点与更换

- 机油过滤器,请于每6个月来点检或更换一次。
- 滤芯和更换每6个月进行一次!

Cleaning and replace the oil filter

- Check and replace the oil filter every six months.
- Check and replace every 6 months!

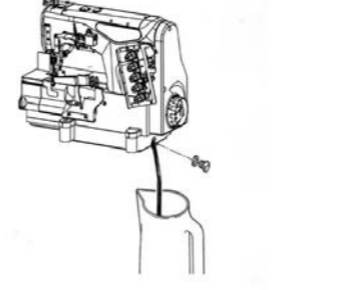


换机油

机油的更换,请在使用开始一个月后更换一次,然后,每6个月更换一次。

Replacing the oil

Replace the oil one month after the first use and every six months thereafter.



JACK高速缝制机相关技术参数

| 高行程数据 | | | | | | | | | | |
|-------------------|------|------|---------|------|-------|------|------|---------|------|------|
| 机型 | ×□□□ | □□□□ | □□□□ | □□□□ | □□□□ | □□□□ | □□□□ | □□□□ | □□□□ | 针杆行程 |
| W4-012S/012B/012C | 356 | 9.7 | 3-3.2 | 9.9 | 5-5.3 | 17 | 6.2 | 0.9-1.2 | 33.4 | |
| | 364 | 9.3 | 2.6-2.8 | 9.4 | 5-5.3 | 17 | 6.2 | 0.9-1.2 | 33.4 | |
| W4-212B | 356 | 9.7 | 3-3.2 | 9.9 | 5-5.3 | 17 | 6.2 | 0.9-1.2 | 33.4 | |
| W4-212B(L) | 356 | 9.7 | 3-3.2 | 9.9 | 5-5.3 | 17 | 6.2 | 0.9-1.2 | 33.4 | |

| 标准行程数据 | | | | | | | | | | |
|-------------------|------|------|---------|------|-------|------|------|---------|------|------|
| 机型 | ×□□□ | □□□□ | □□□□ | □□□□ | □□□□ | □□□□ | □□□□ | □□□□ | □□□□ | 针杆行程 |
| W4-012S/012B/012C | 356 | 8.5 | 3.2-3.5 | 8.5 | 5-5.3 | 17 | 6.2 | 0.9-1.0 | 30.8 | |
| | 364 | 8.1 | 2.8-3.1 | 8.5 | 5-5.3 | 17 | 6.2 | 0.9-1.2 | 30.8 | |
| W4-212B | 356 | 8.1 | 2.8-3.1 | 8.5 | 5-5.3 | 17 | 6.2 | 0.9-1.0 | 30.8 | |
| W4-212B(L) | 356 | 8.1 | 2.8-3.1 | 8.5 | 5-5.3 | 17 | 6.2 | 0.9-1.2 | 30.8 | |

工业缝纫机安全使用注意事项:

1. 必须遵守基本措施;
 2. 必须经过专业培训,对缝制机设备性能;
 3. 使用前应检查所有安全装置;
 4. 在安装机针、更换机针、压脚、针板、送布牙、弯针、旋梭或修理时,应立即关闭电源;
 5. 离开缝制机或工作场所时应关闭电源;
 6. 使用离合马达时,要等待马达完全停止后再进行;
 7. 缝制机及附属装置使用的机油,润滑油等液体流入眼睛或沾到皮肤上应立即清洗;
 8. 禁止用手触摸缝制机通电时的零件或装置;
 9. 有关工业用平缝机与包缝机的修理、改造、主要机构的调整由专门技术人员来进行;
 10. 一般的维修保养由专人进行;
 11. 在电气方面的修理应在电气技术员的监督和指导下进行;
 12. 缝制机使用期间应定期清扫;
 13. 为了正常安全运转,应安装地线,同时应在不受高频焊接机等强噪声源影响的环境下使用;
 14. 电源插头应由专人安装;
 15. 工业用平缝机、包缝机在指定用途以外不能使用。
- 环保要求:
1. 使用过程中产生的废油及其他废弃物应根据当地环保的要求进行合理的处置。
 2. 请在使用完后及时关闭电源,减少电能的消耗。
 3. 请在说明书要求的电压及环境下使用,已延长产品的使用寿命,减少废弃物的产生。
 4. 机器报废后请勿将本机器及其附件作为普通的生活垃圾处理。请遵守本设备及其附件处理的本地法令,并支持回收行动。

Notes for safe use of industrial sewing machines:

1. Basic measures must be observed.
2. Pass the specialized training and master sewing machine equipment performance.
3. All safety devices should be checked before use.
4. When installing needle, and changing needle, presser foot, plate, feed dog, bent needle, hook or repairing, the power supply should be turned off immediately.
5. Power should be turned off when leaving the sewing machine or workplace.
6. When using the clutch motor, please wait until the motor stops completely.
7. The machine oil and other liquids used in sewing machines and ancillary devices should be cleaned immediately when they are put into eyes or touch skin.
8. Do not touch the parts or devices when the machine is powered by hand.
9. The repair, renovation and adjustment of the main mechanisms of the relevant industrial sewing machines and overseers shall be carried out by specialized technicians.
10. General maintenance is carried out by specially-assigned persons.
11. Electrical repairs should be performed under the supervision and direction of the electrical technician.
12. The machine should be cleaned regularly during operation.
13. In order to operate normally and safely, ground lines should be installed, and they should be used in an environment free from strong noise sources such as high frequency welding machine.
14. Power plug should be installed by specially-assigned person.
15. Industrial lockstitch sewing machine and overlock sewing machine can not be used except the designated use.

Environmental requirements:

1. Please dispose the waste oil and other waste products properly according to local environmental protection requirements.
2. Please turn off the power after use to reduce power consumption.
3. Please use under the voltage and environment required in the manual to extend the service life of the product and reduce waste generation.
4. Do not treat the machine and its accessories as ordinary household garbage after being scrapped. Please comply with local laws governing the disposal of the equipment and its accessories and support recycling operations.