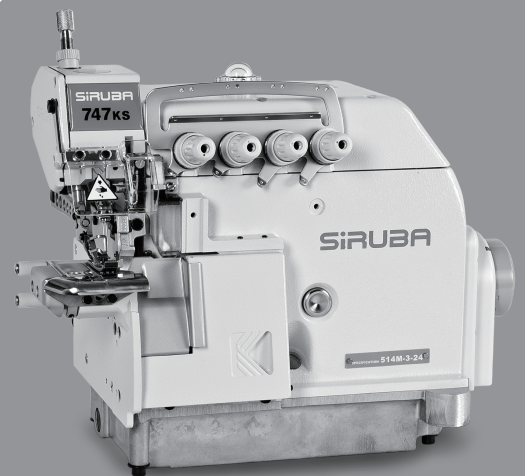


SIRUBA[®] Sew Reach

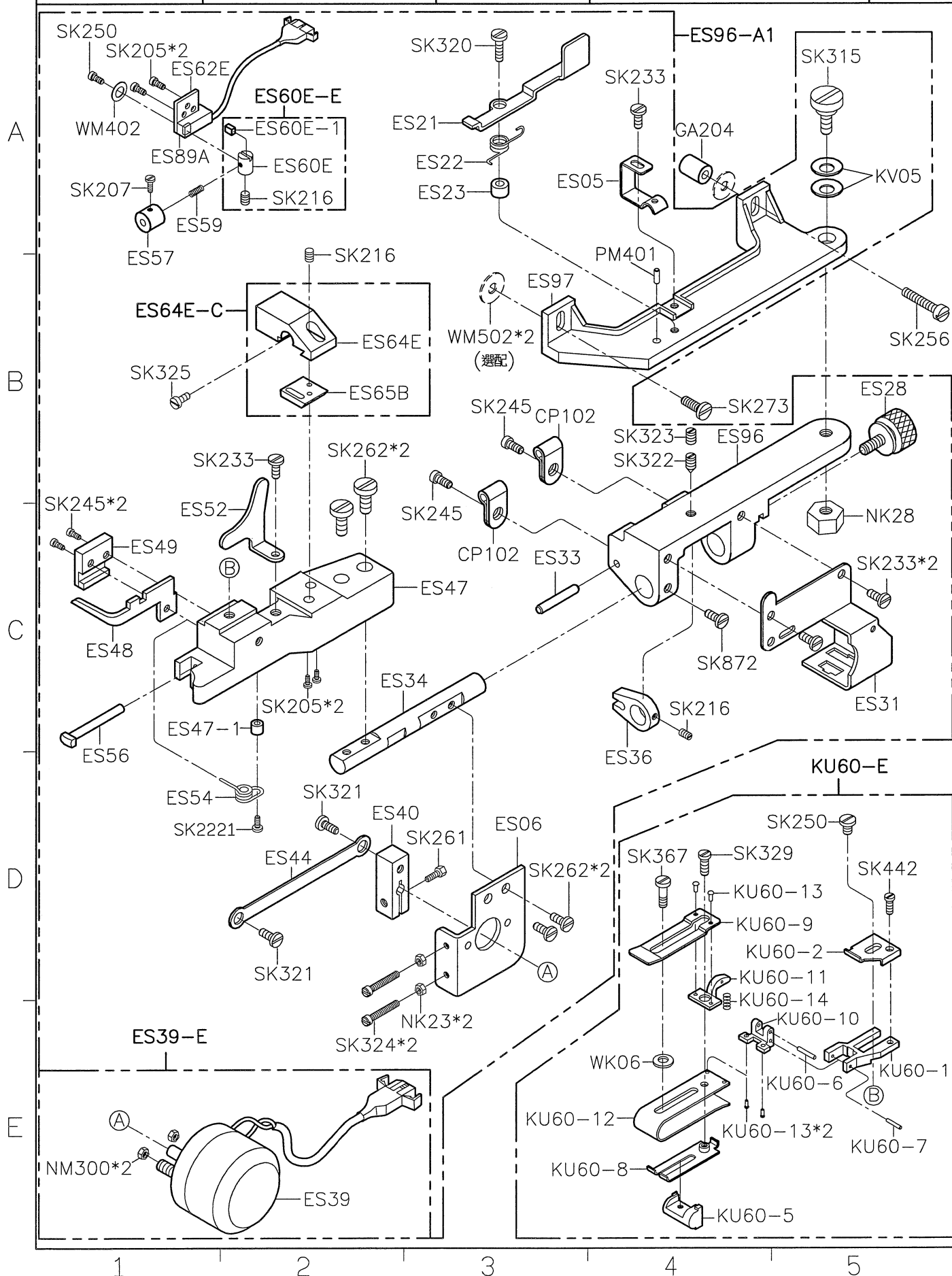
輔助件

AUXILIARY PARTS

■ 700KS



SIRUBA PARTS LIST	Series	Parts Group	Subclass / Remark	Page
	700KS	ESK		1/3
				Date
				2016/05/24



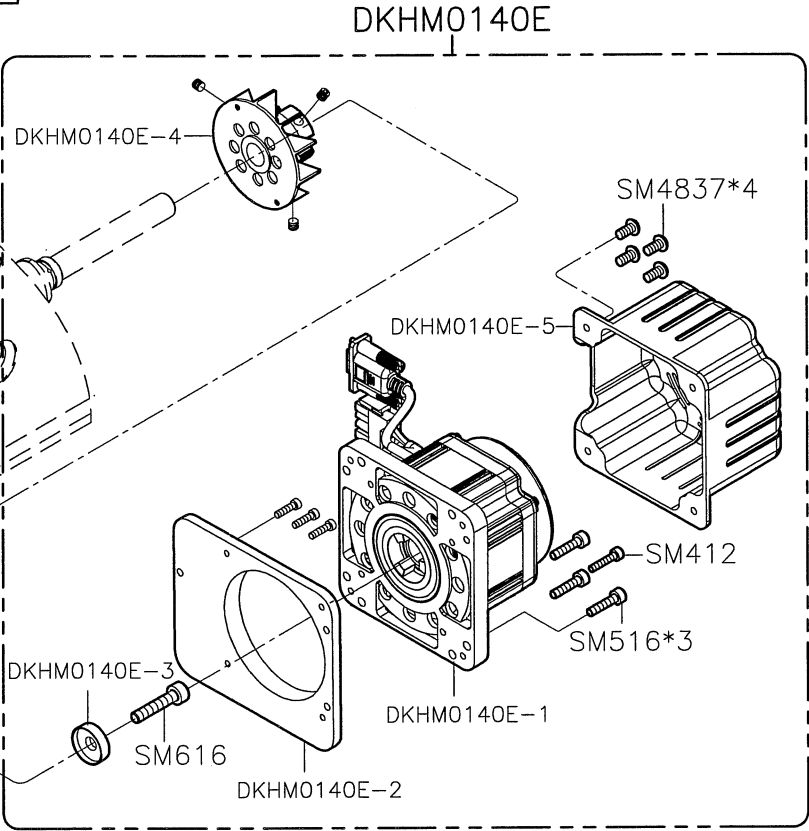
SIRUBA PARTS LIST	Series	Parts Group	Subclass / Remark	Page
	700KS	ESK		2/3
				Date
				2016/05/24

DKH303ADE-A

A

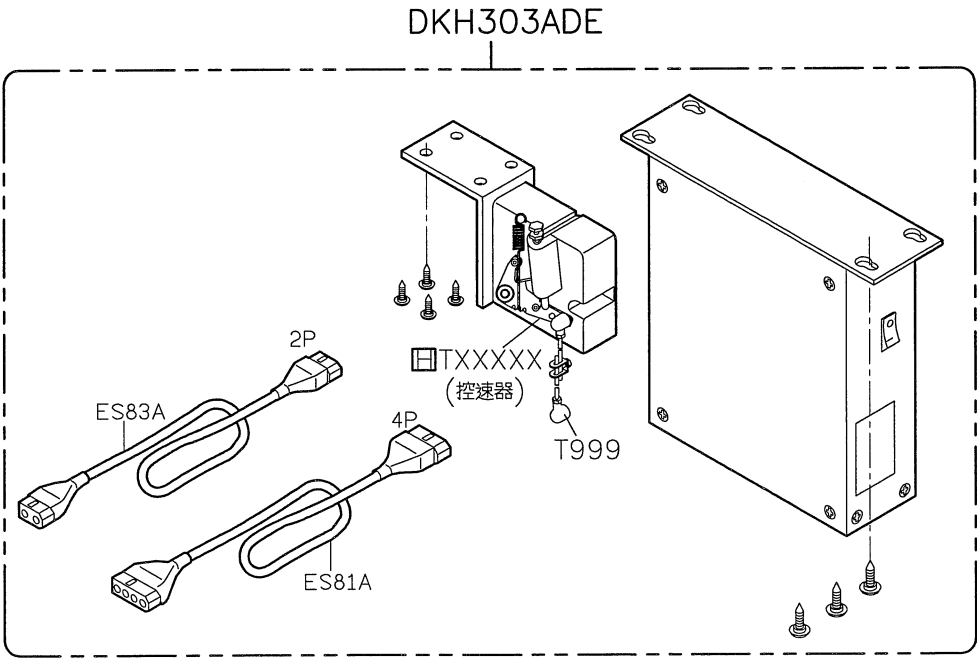
B

C

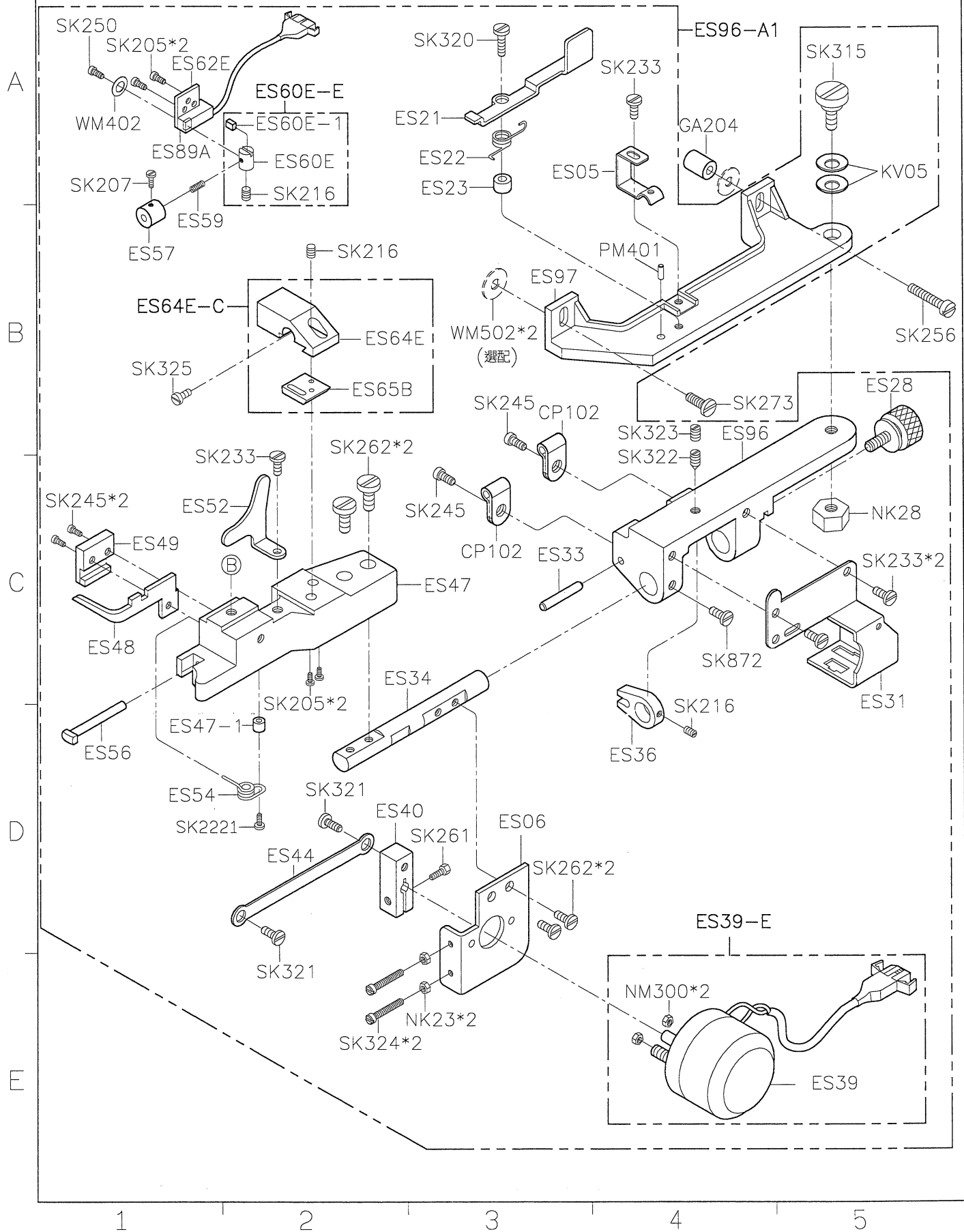


D

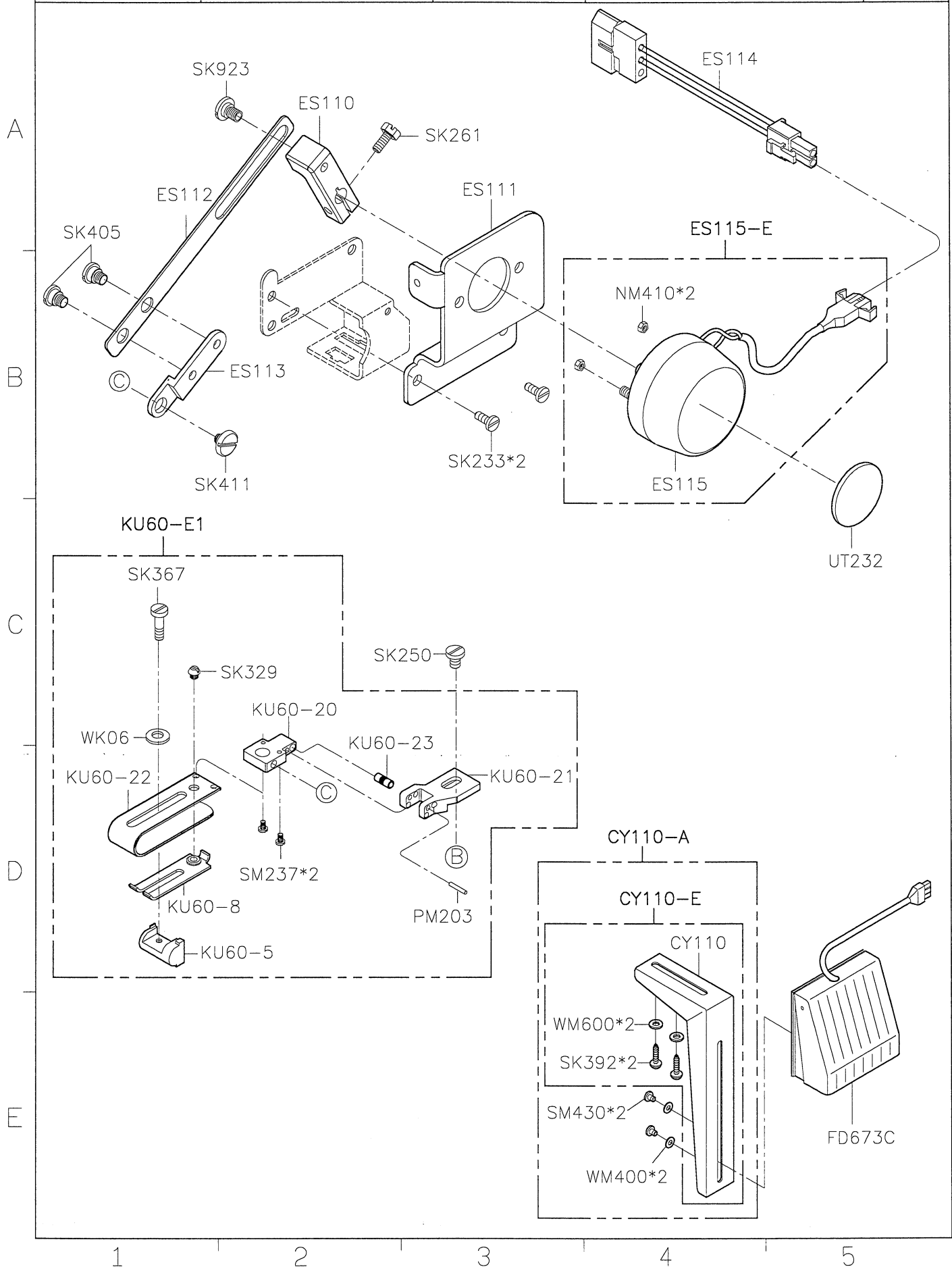
E



SIRUBA PARTS LIST	Series	Parts Group	Subclass / Remark	Page
	700KS	ESSK		1/4
				Date
				3018/3/19



SIRUBA PARTS LIST	Series	Parts Group	Subclass / Remark	Page
	700KS	ESSK		2/4
				Date
				3018/3/19



SIRUBA PARTS LIST	Series	Parts Group	Subclass / Remark	Page
	700KS	ESSK		3/4
				Date
				3018/3/19

DKH303ADE-A

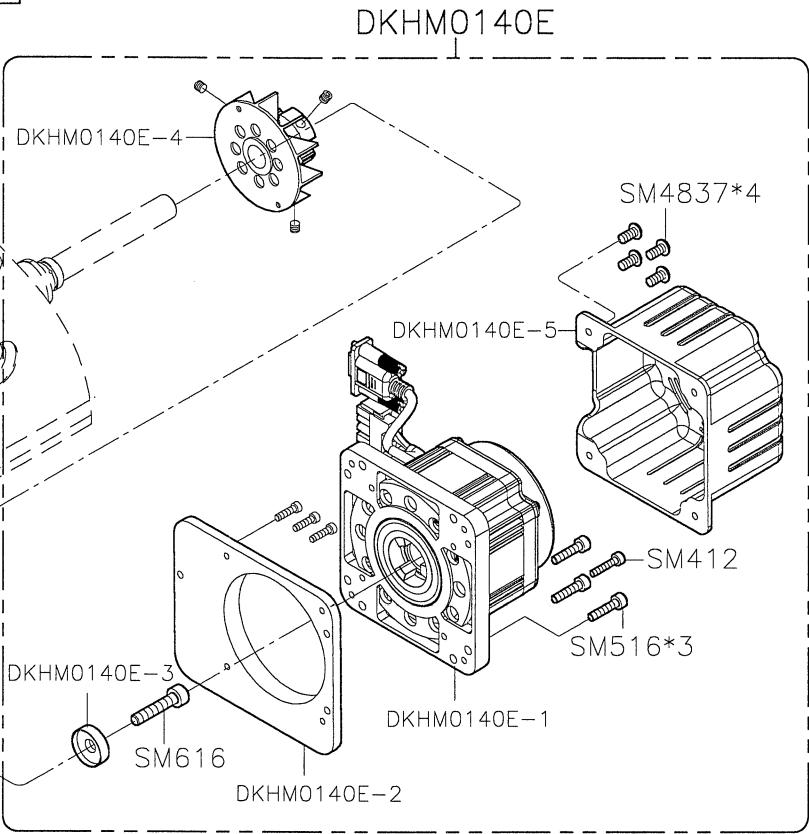
A

B

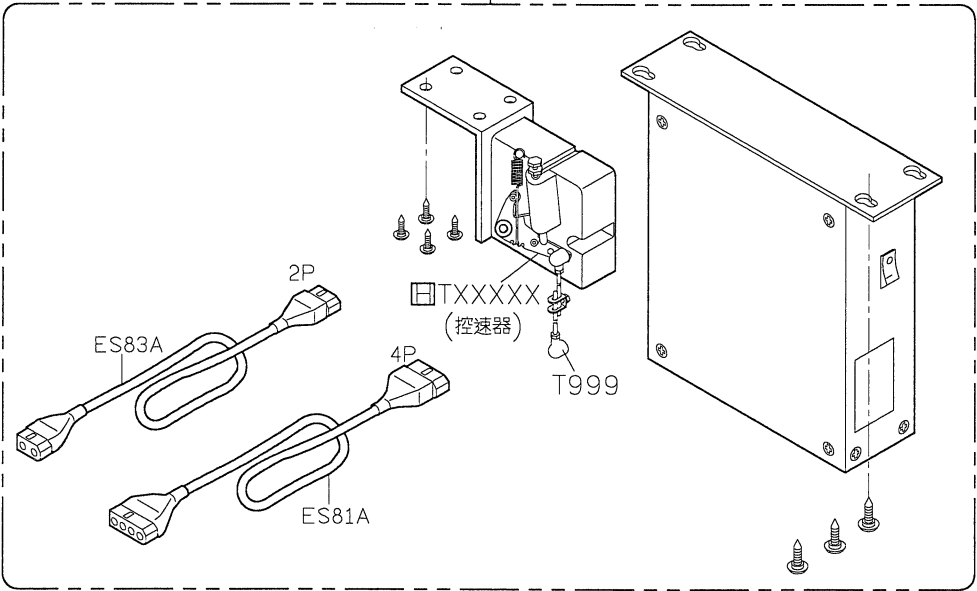
C

D

E



DKH303ADE



<div>SIRUBA</div> <div>PARTS LIST</div>	Series	Parts Group	Subclass / Remark	Page
	700KS	ESSK		4/4
				Date
				3018/3/19

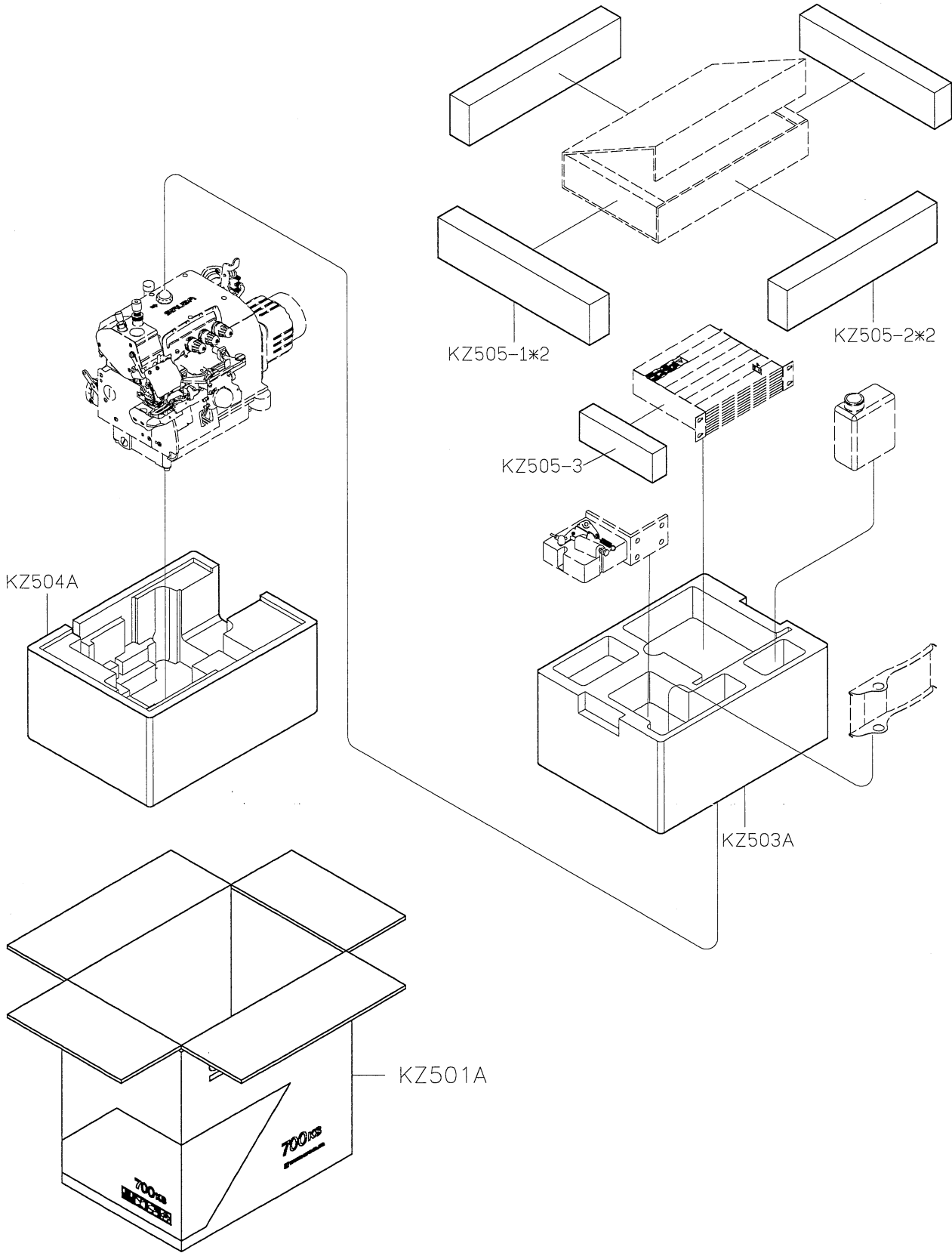
A

B

C

D

E



1

2

3

4

5

SiRUBA

PARTS LIST

Series

700KS

Parts Group

LFD6-K1

Subclass / Remark

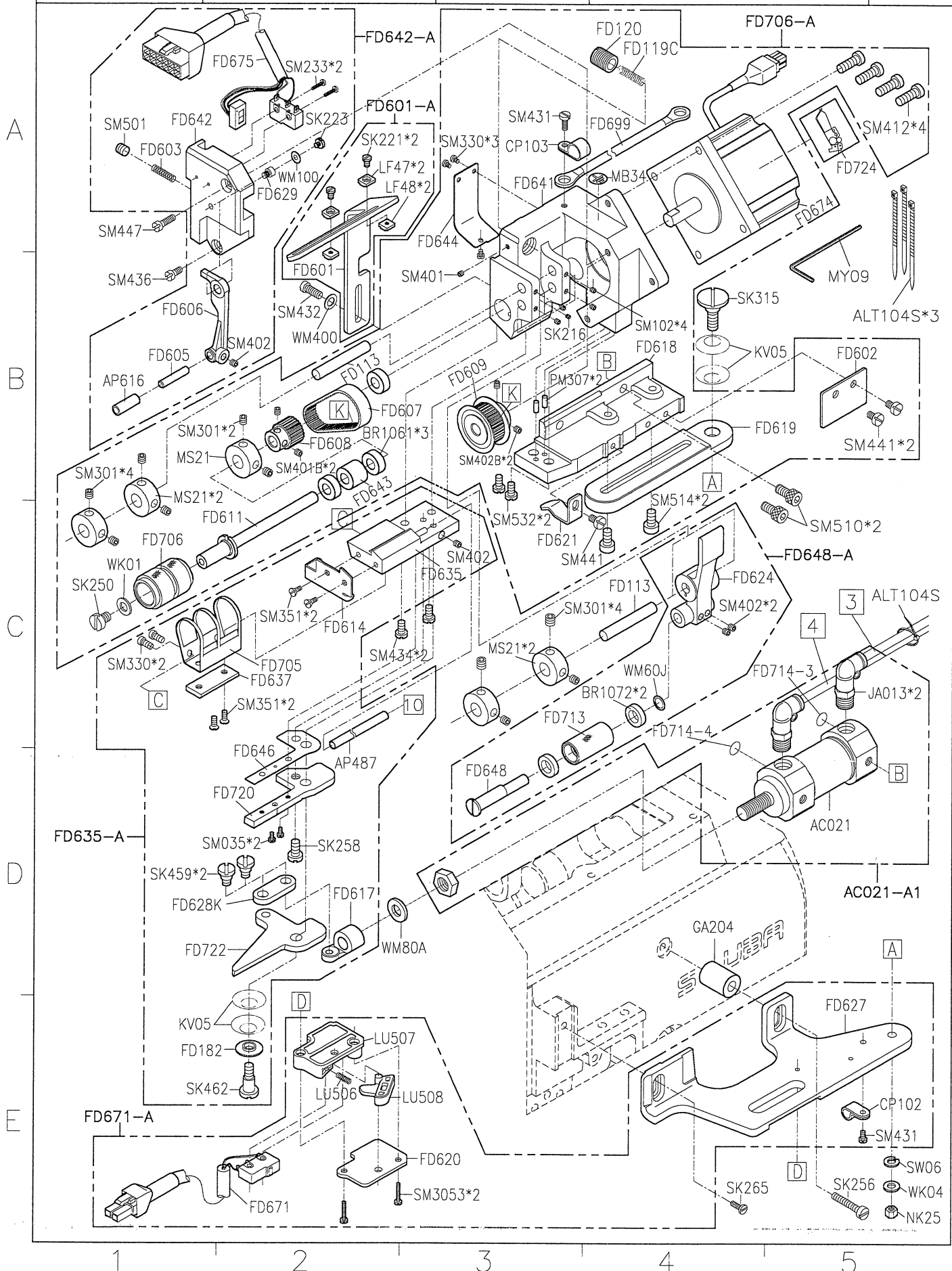
For
Short Wheel
Cut Limit 20mm

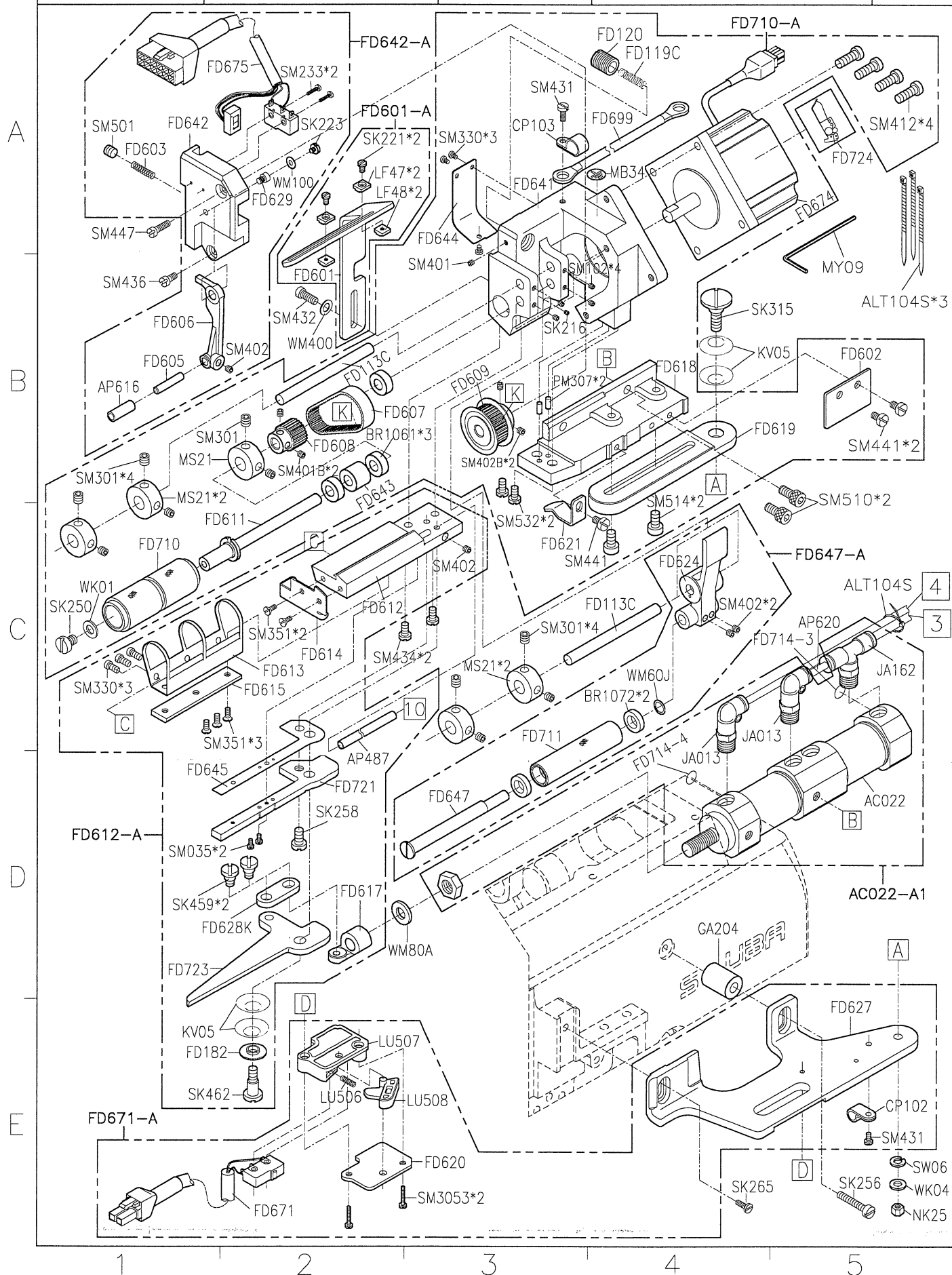
Page

1/12

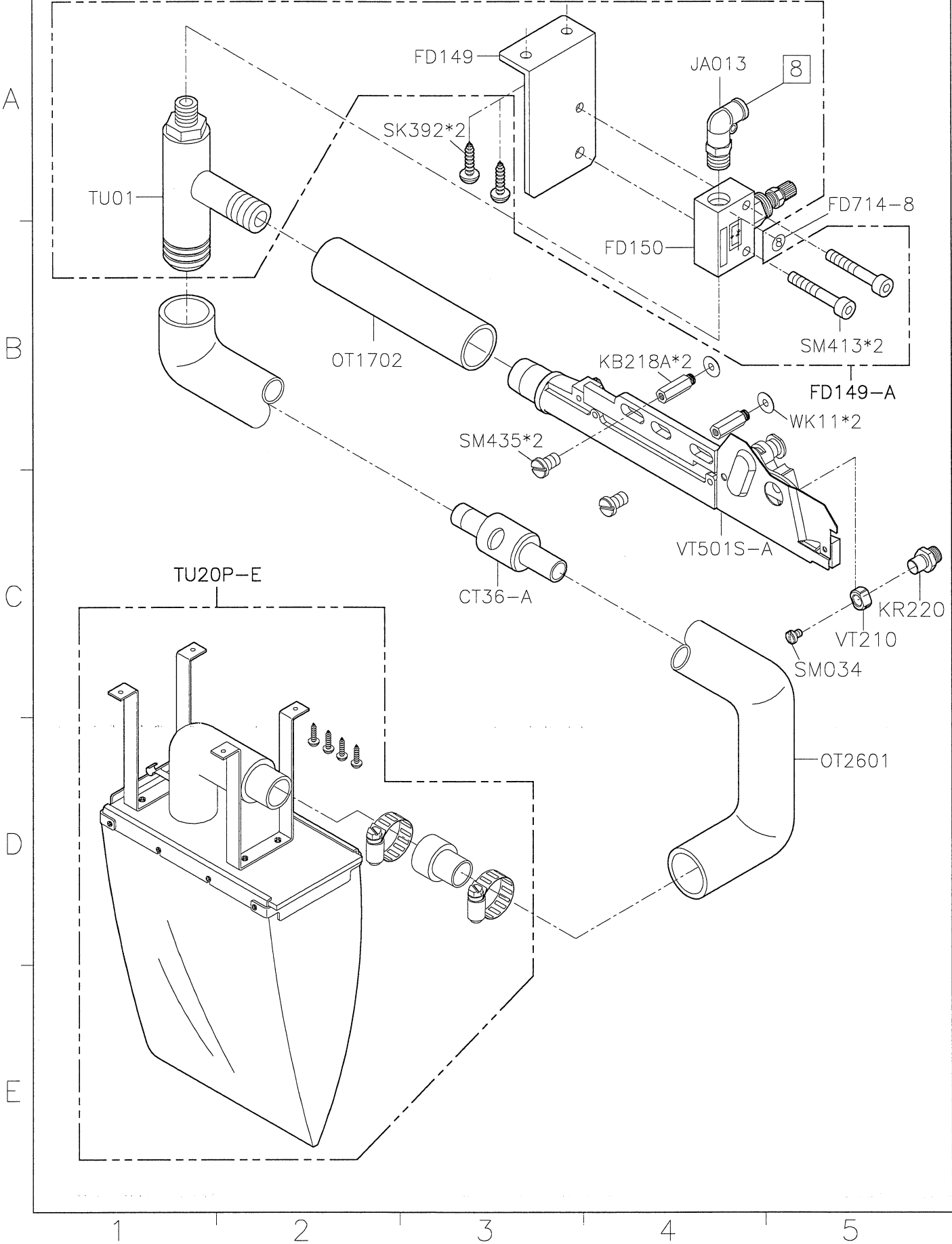
Date

2018/3/19





<div>SIRUBA</div> <div>PARTS LIST</div>	Series	Parts Group	Subclass / Remark	Page
	700KS	LFD6-K1 LFD6A-K1		3/12
				Date
				2018/3/19



<div> <div>SIRUBA</div> <div>PARTS LIST</div> </div>	Series	Parts Group	Subclass / Remark	Page
	700KS	LFD6-K1 LFD6A-K1	With Thread Release Device 含鬆線裝置 (3線)	4/12
				Date
				2018/3/19

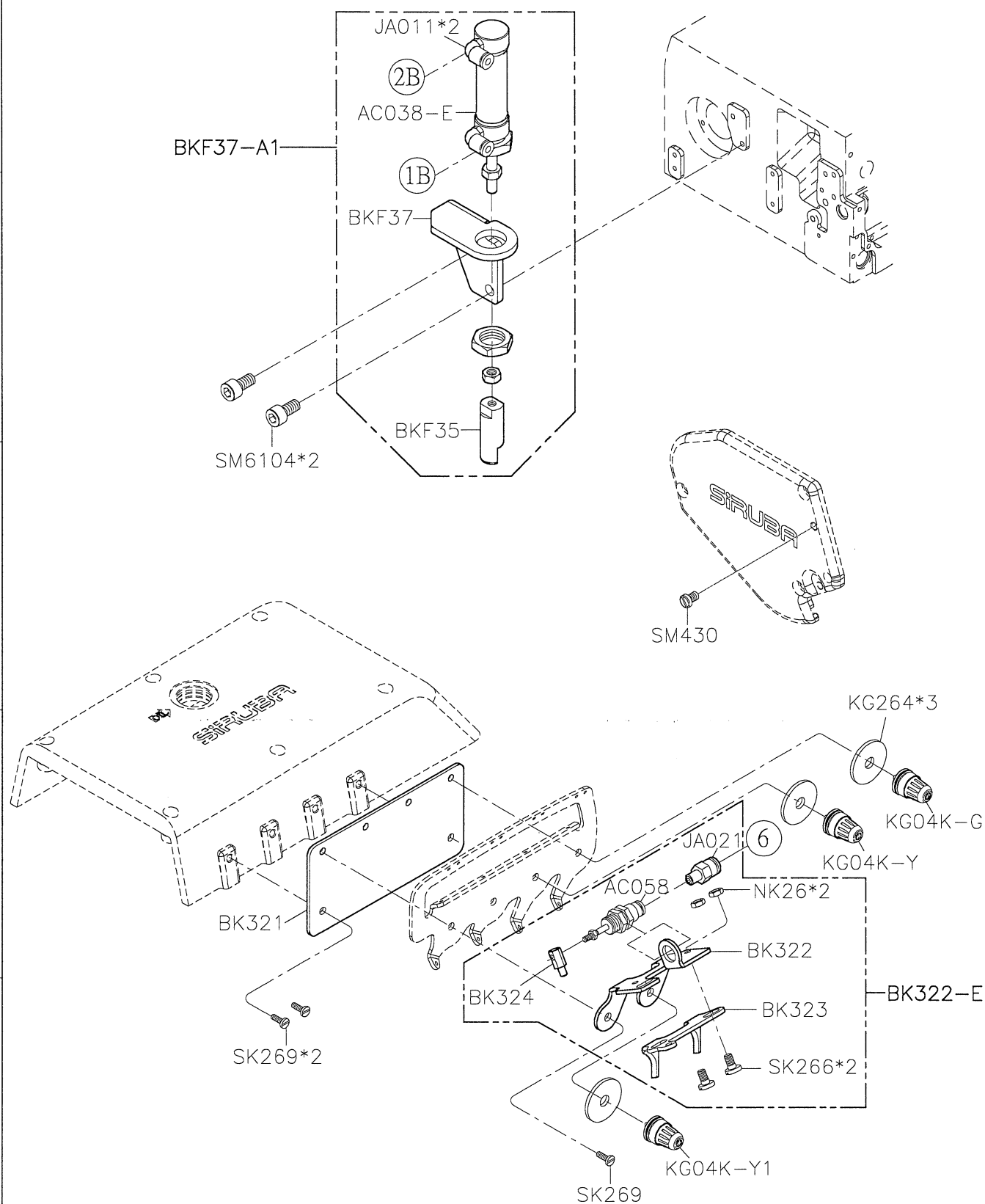
A

B

C

D

E



1

2

3

4

5

SIRUBA PARTS LIST	Series	Parts Group	Subclass / Remark	Page
	700KS	LFD6-K1 LFD6A-K1	With Thread Release Device 含鬆線裝置 (4線)	5/12
				Date
				2018/3/19

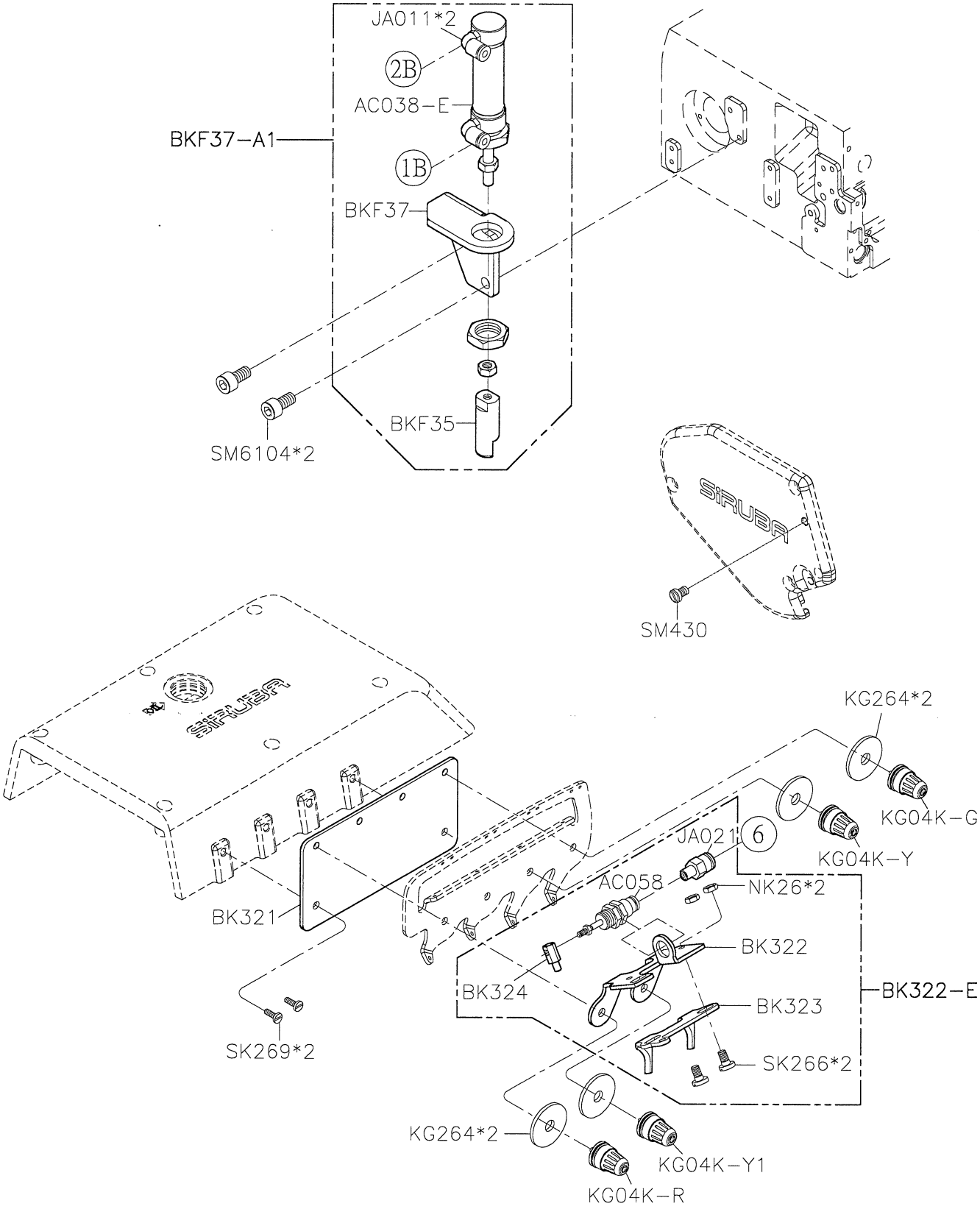
A

B

C

D

E



SIRUBA PARTS LIST	Series	Parts Group	Subclass / Remark	Page
	700KS	LFD6-K1 LFD6A-K1	#賀欣便品	6/12
				Date
				2018/3/19

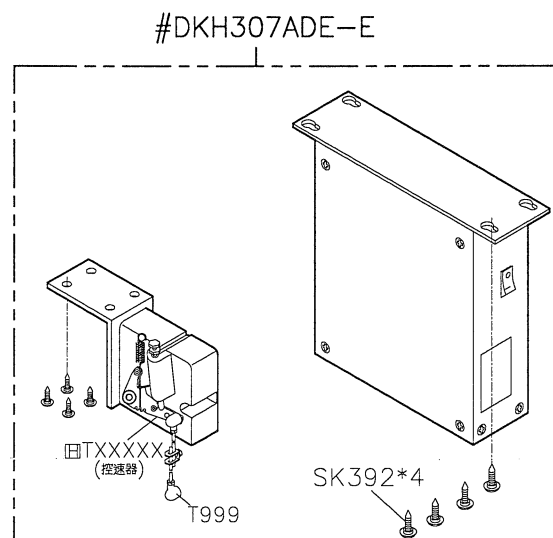
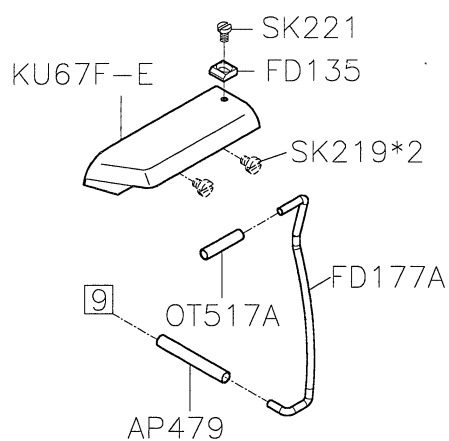
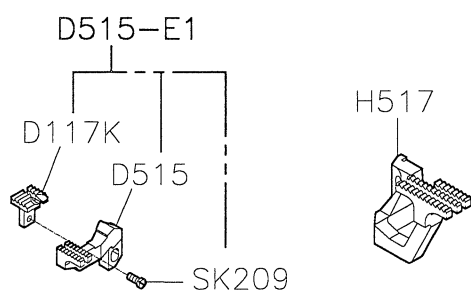
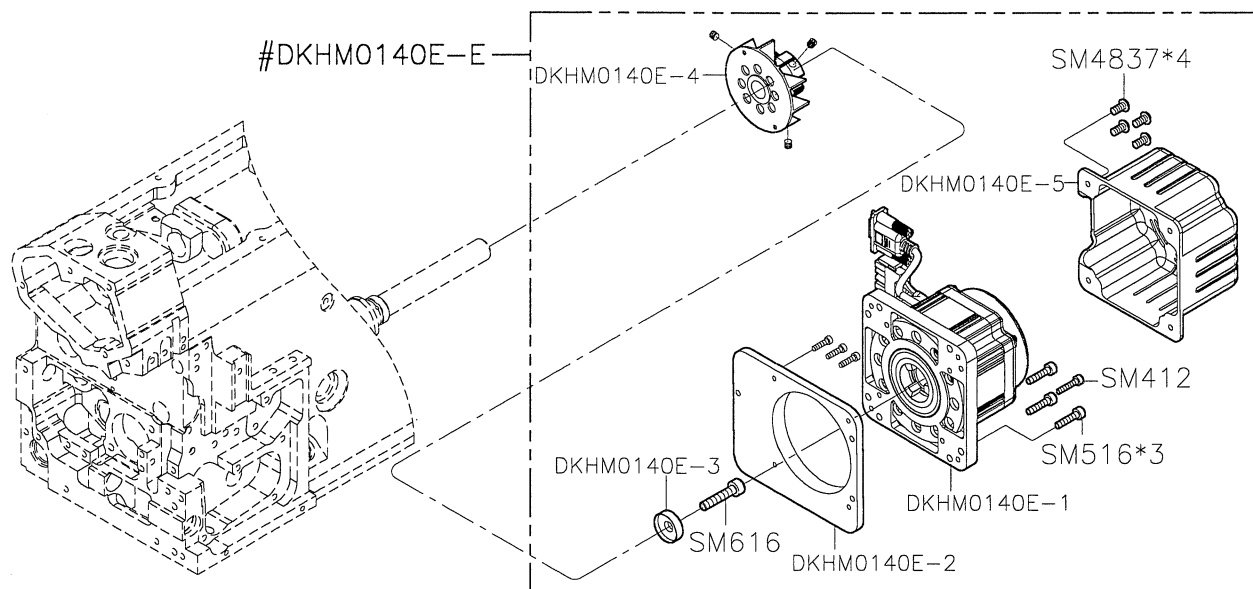
A

B

C

D

E



線別種類	針板	押具組	適用範圍 (鬆緊帶寬)
737	E324K	P212A-A1	1/8"~1/2"
		P212A-3A1	3/8"~7/8"
		P212A-5A1	3/4"~2 1/4"
747	E434K	P212A-2A1	1/8"~1/2"
		P212A-4A1	3/8"~7/8"
		P212A-6A1	3/4"~2 1/4"

1

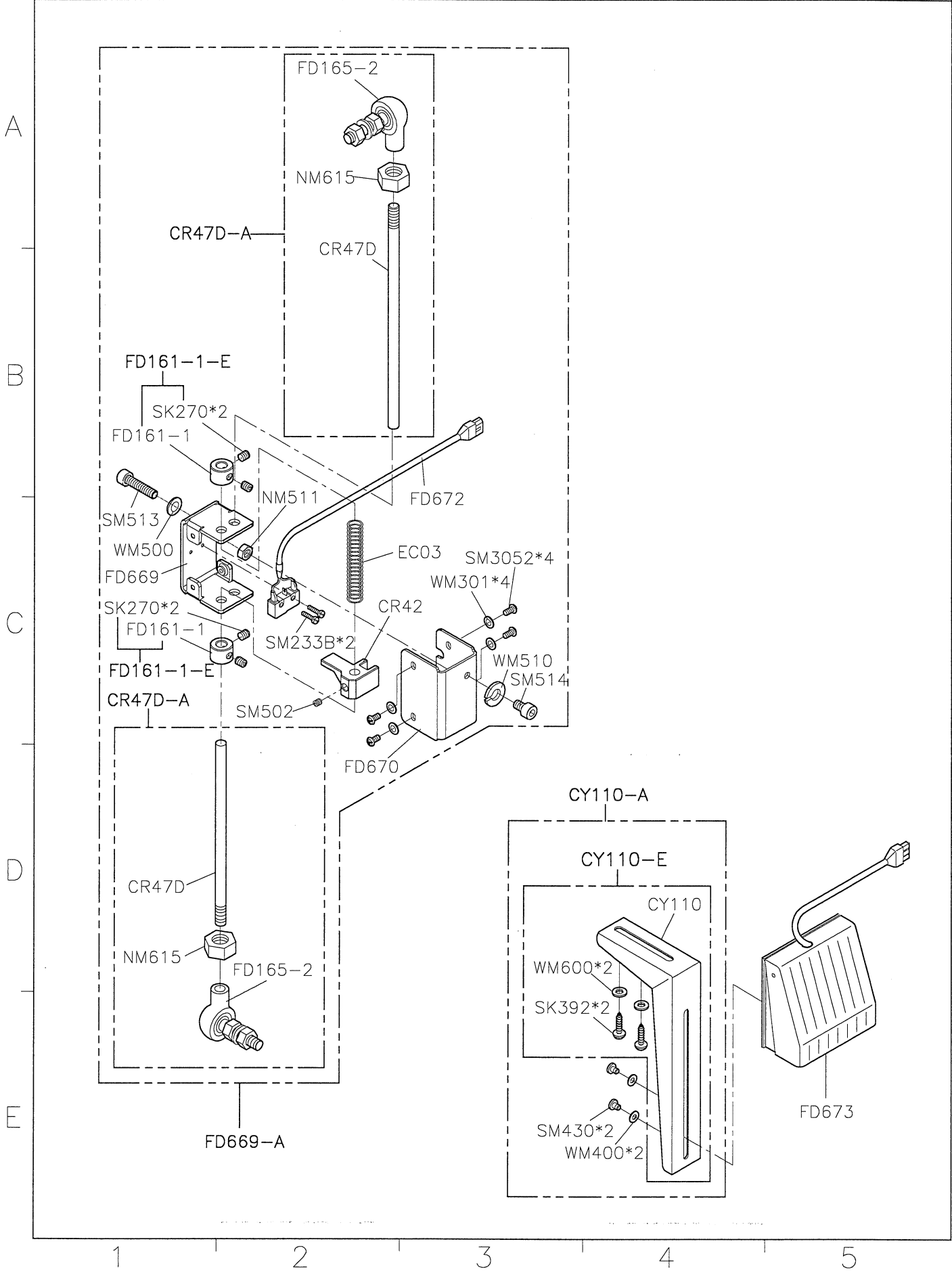
2

3

4

5

SiRUBA PARTS LIST	Series	Parts Group	Subclass / Remark	Page
	700KS	LFD6-K1 LFD6A-K1		7/12
				Date
				2018/3/19



SiRUBA

PARTS LIST

Series

700KS

Parts Group

LFD6-K1
LFD6A-K1

Subclass / Remark

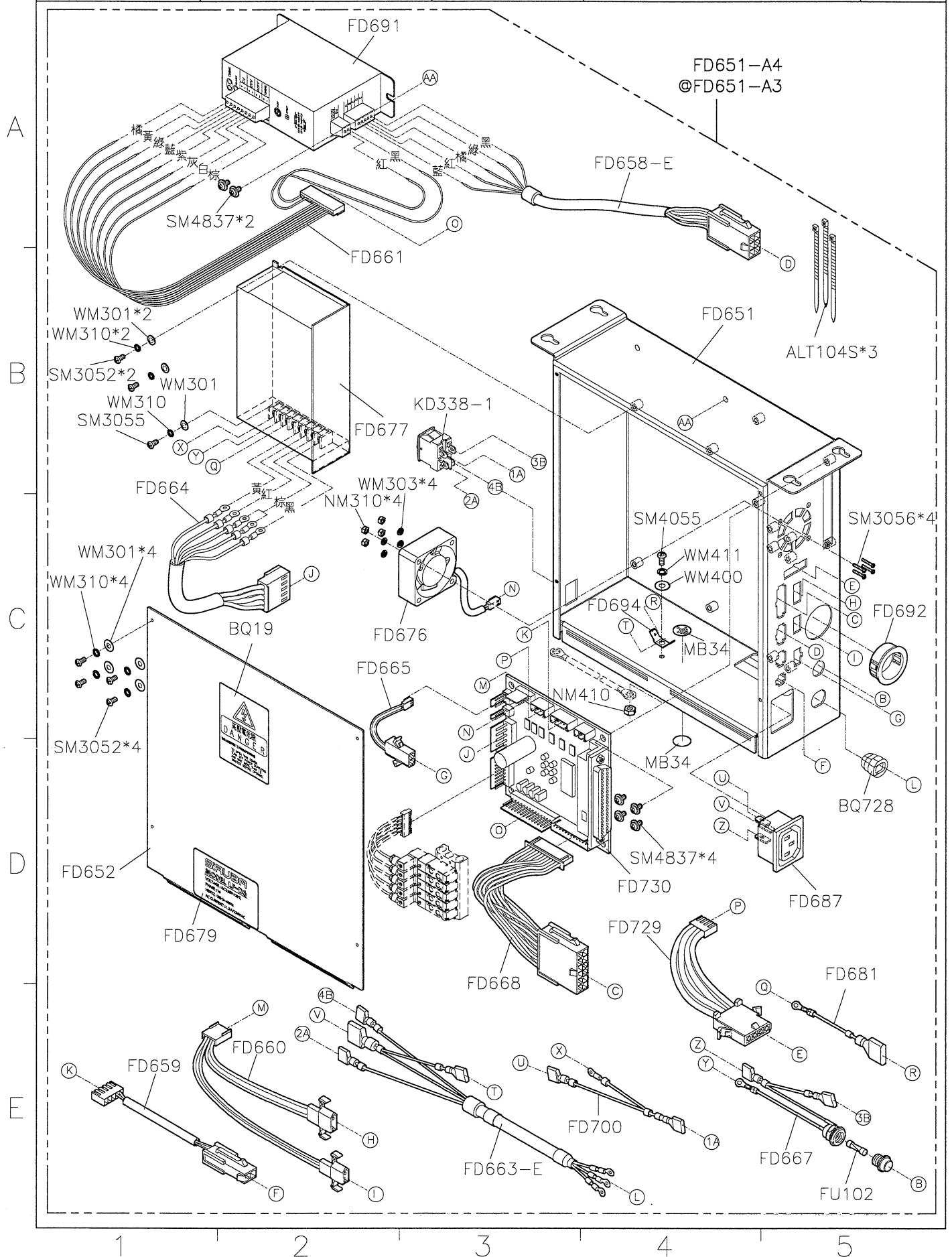
@With Thread Release Device
@含鬆線裝置

Page

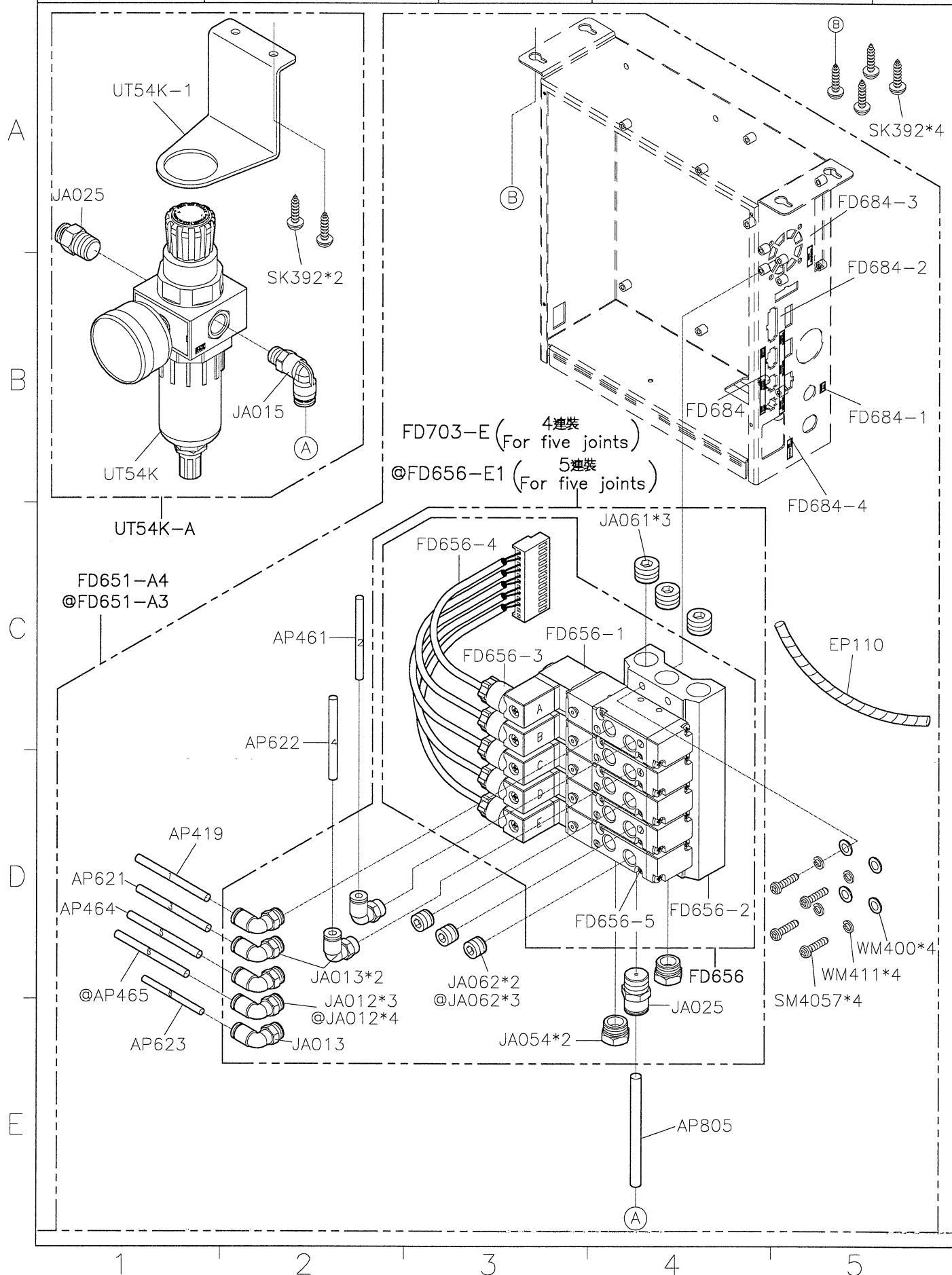
8/12

Date

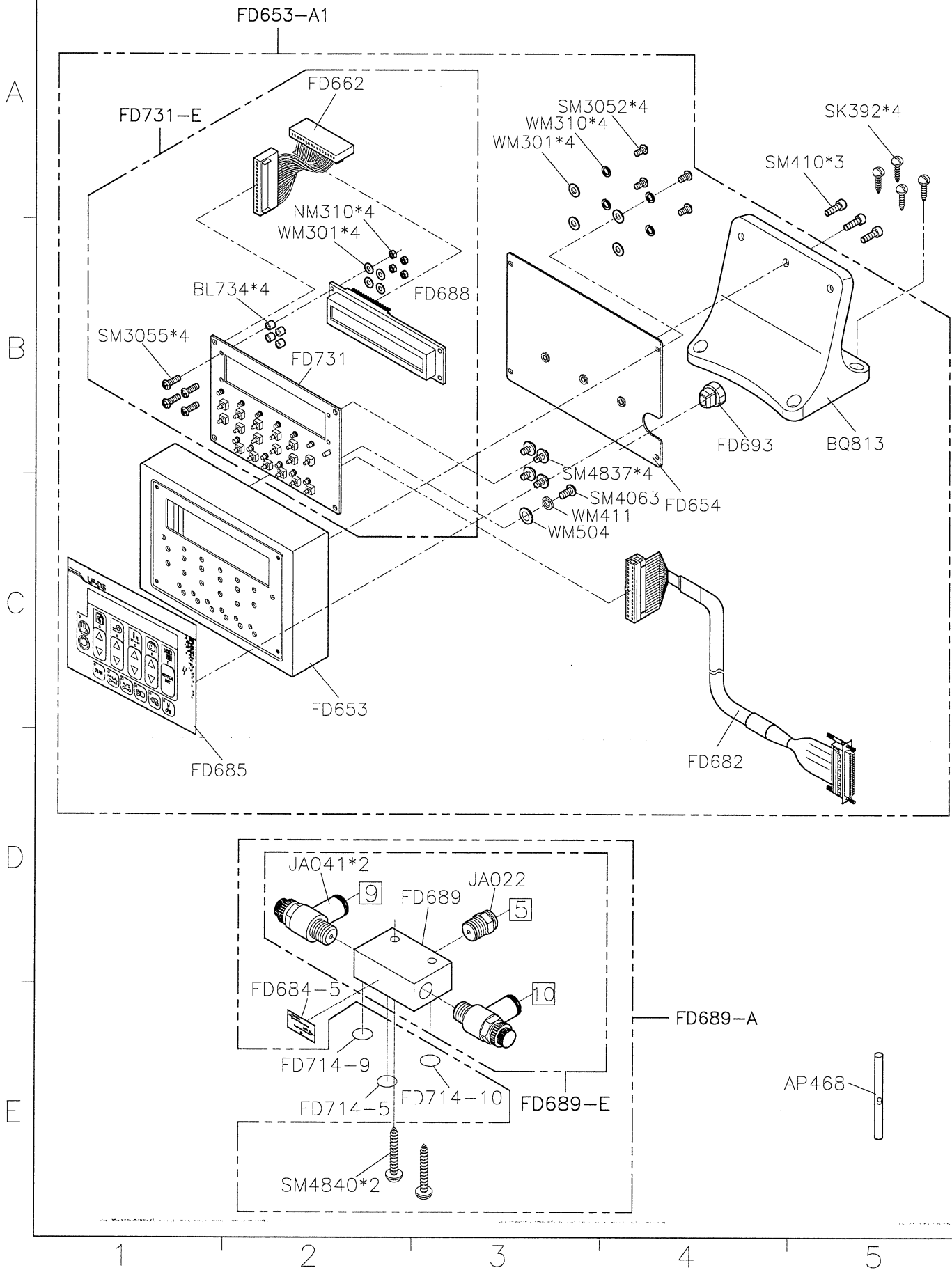
2018/3/19



SiRUBA PARTS LIST	Series	Parts Group	Subclass / Remark	Page
	700KS	LFD6-K1 LFD6A-K1	@With Thread Release Device @含鬆線裝置	9/12
				Date
				2018/3/19



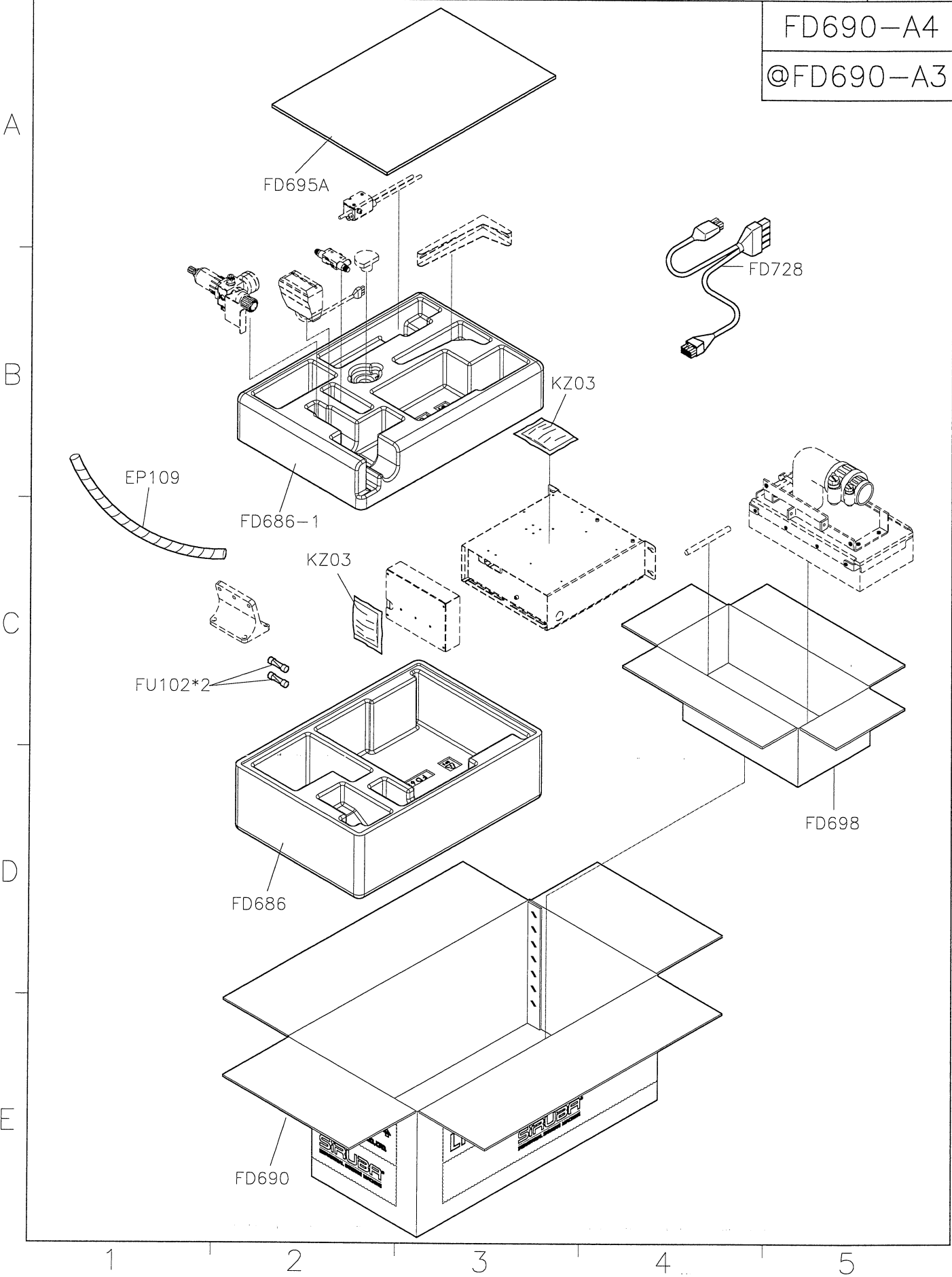
SIRUBA PARTS LIST	Series	Parts Group	Subclass / Remark	Page
	700KS	LFD6-K1 LFD6A-K1		10/12
				Date
				2018/3/19



SIRUBA PARTS LIST	Series	Parts Group	Subclass / Remark	Page
	700KS	LFD6-K1 LFD6A-K1	@With Thread Release Device @含鬆線裝置	11/12
				Date
				2018/3/19

FD690-A4

@FD690-A3



<div>SIRUBA</div> <div>PARTS LIST</div>	Series	Parts Group	Subclass / Remark	Page
	700KS	LFD6-K1 LFD6A-K1		12/12
				Date
				2018/3/19

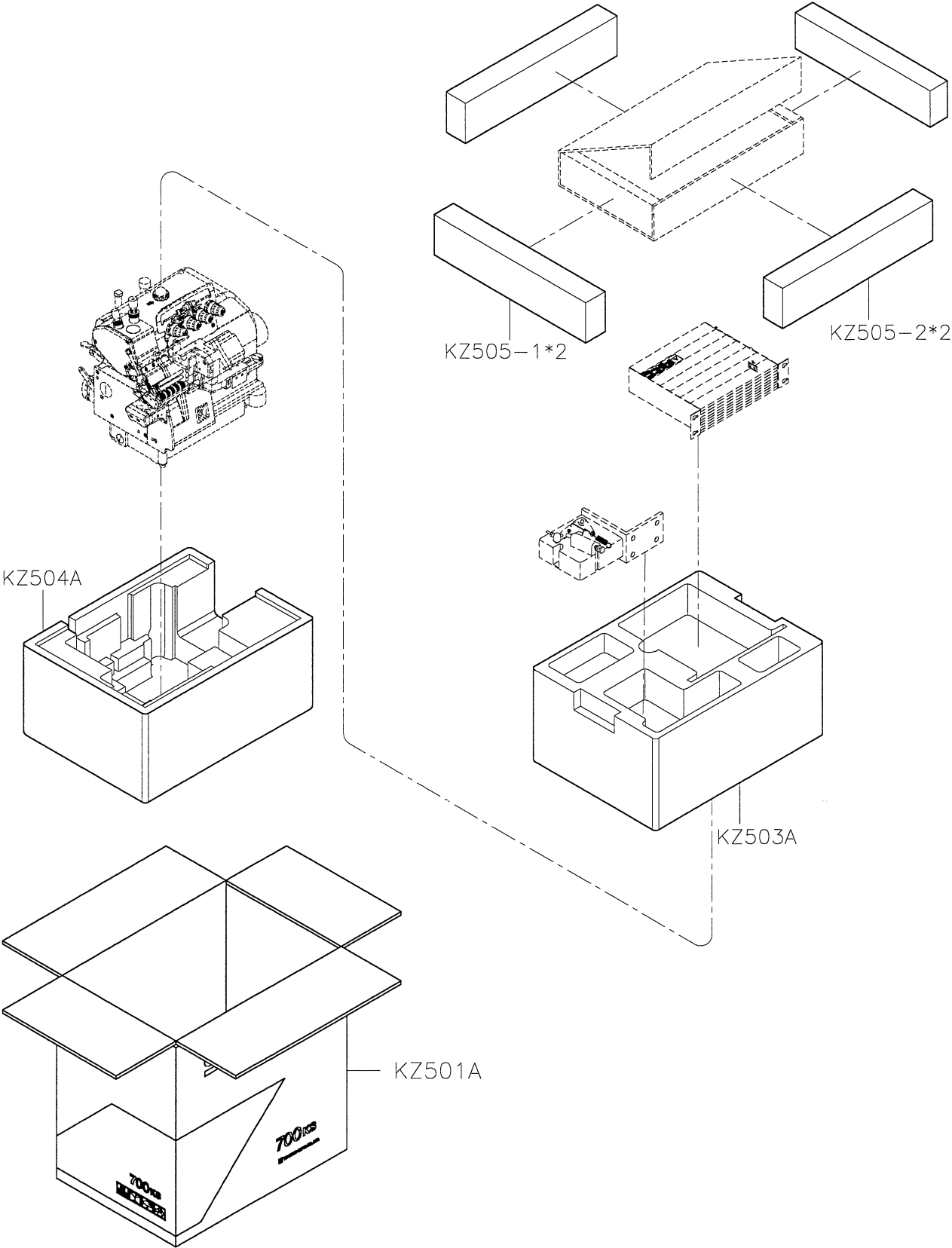
A

B

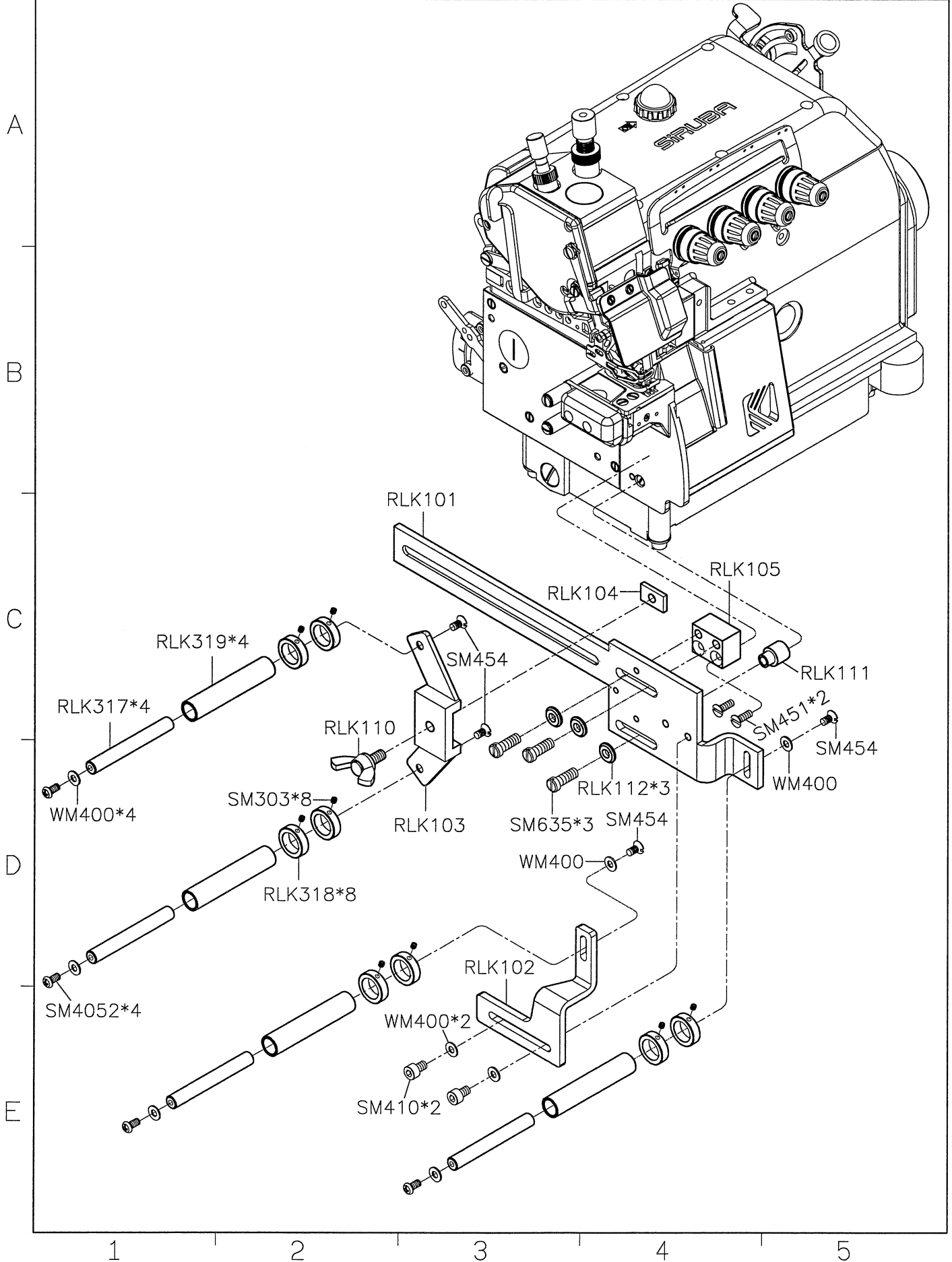
C

D

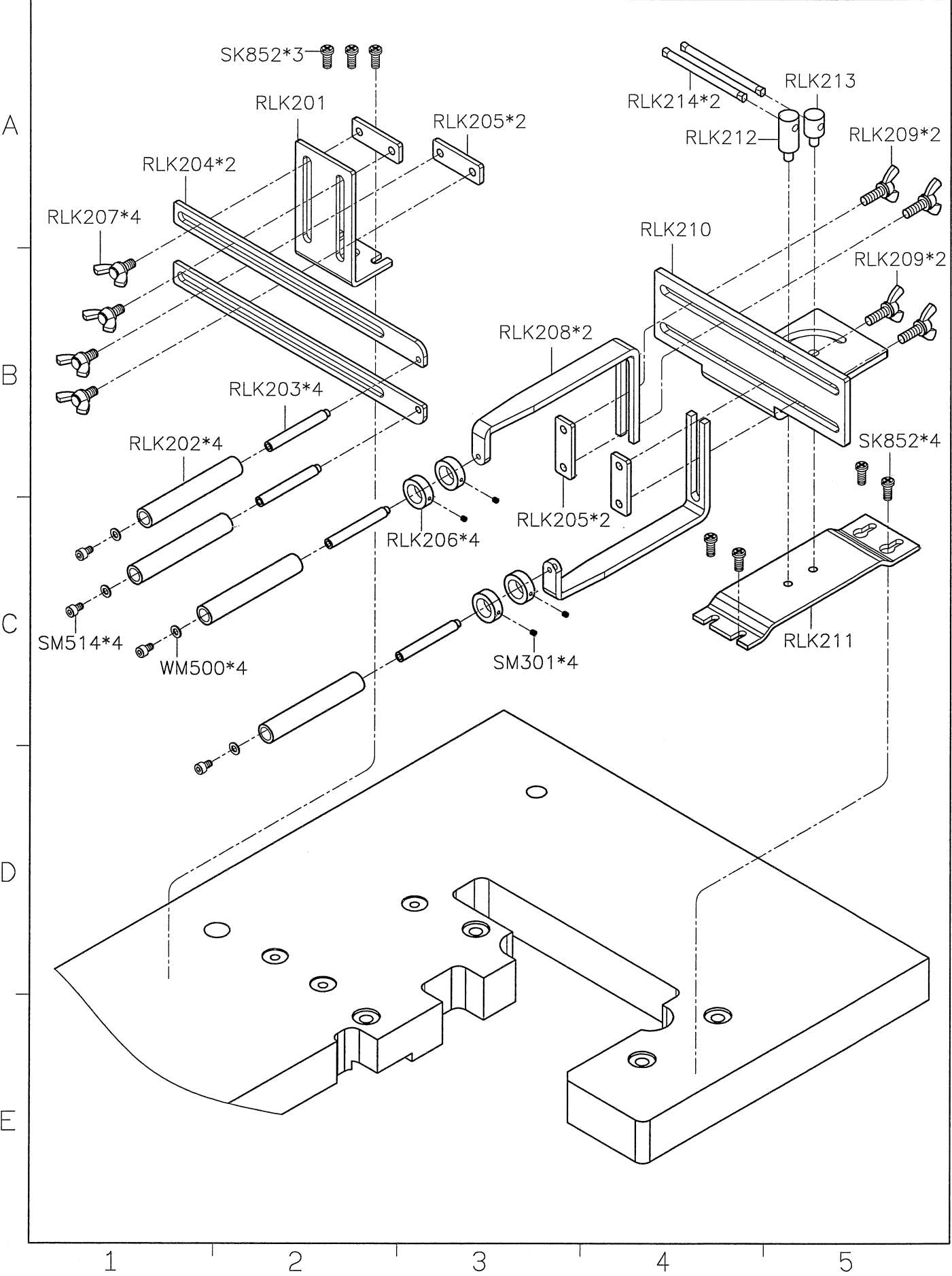
E



<div> <div>SIRUBA</div> <div>PARTS LIST</div> </div>	Series	Parts Group	Subclass / Remark	Page
	700KS/700KST	RLK1		1/1
				Date
				2013/12/12



SIRUBA PARTS LIST	Series	Parts Group	Subclass / Remark	Page
	700KS/700KST	RLK2		1/1
				Date
				2013/12/12



SIRUBA PARTS LIST	Series	Parts Group	Subclass / Remark	Page
	700KS/700KST	RLK3P		1/1
				Date
				2015/07/17

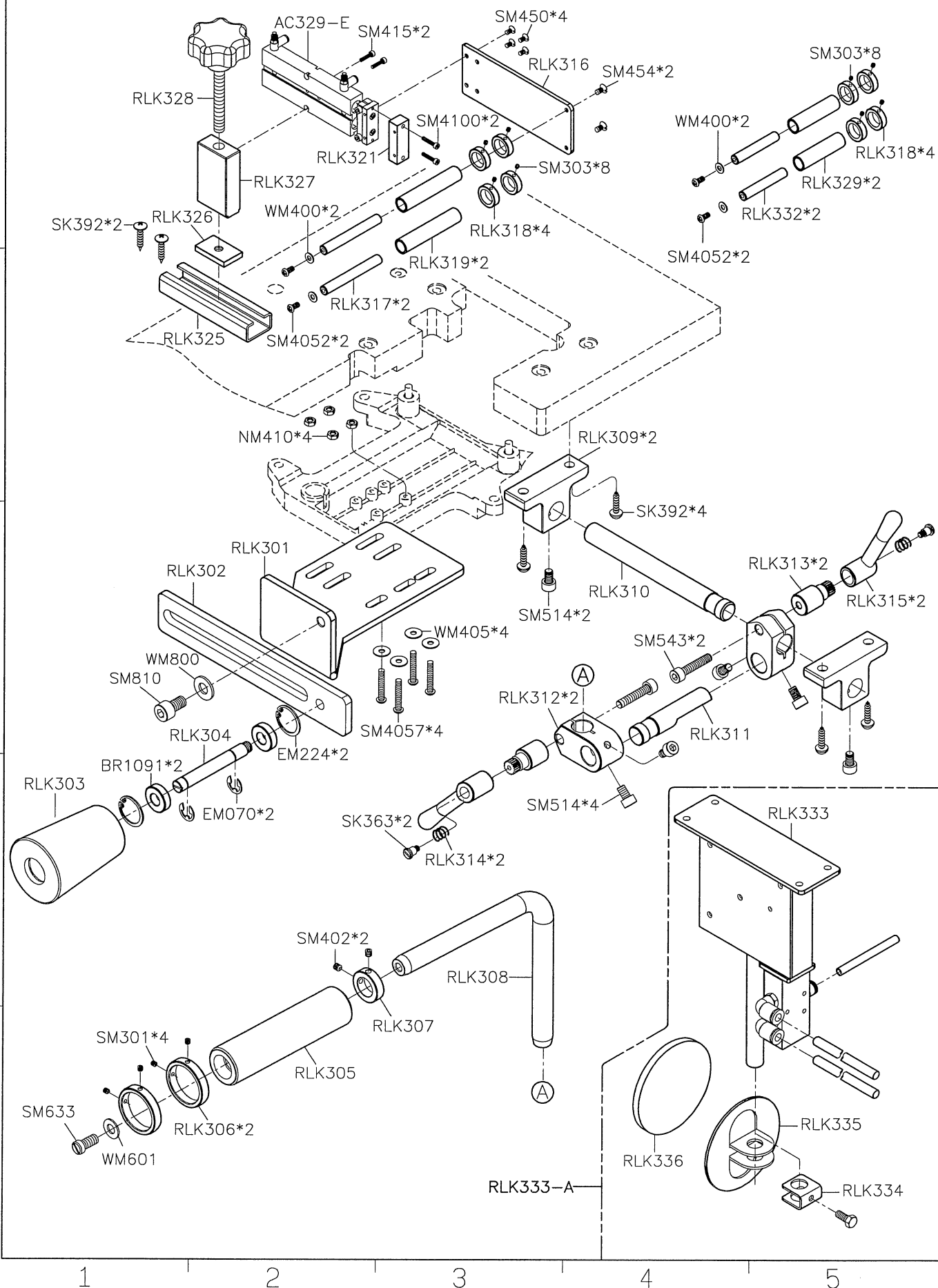
A

B

C

D

E



SiRUBA PARTS LIST	Series	Parts Group	Subclass / Remark	Page
	700KS/700KST	RLK4		1/1
				Date
				2015/07/17

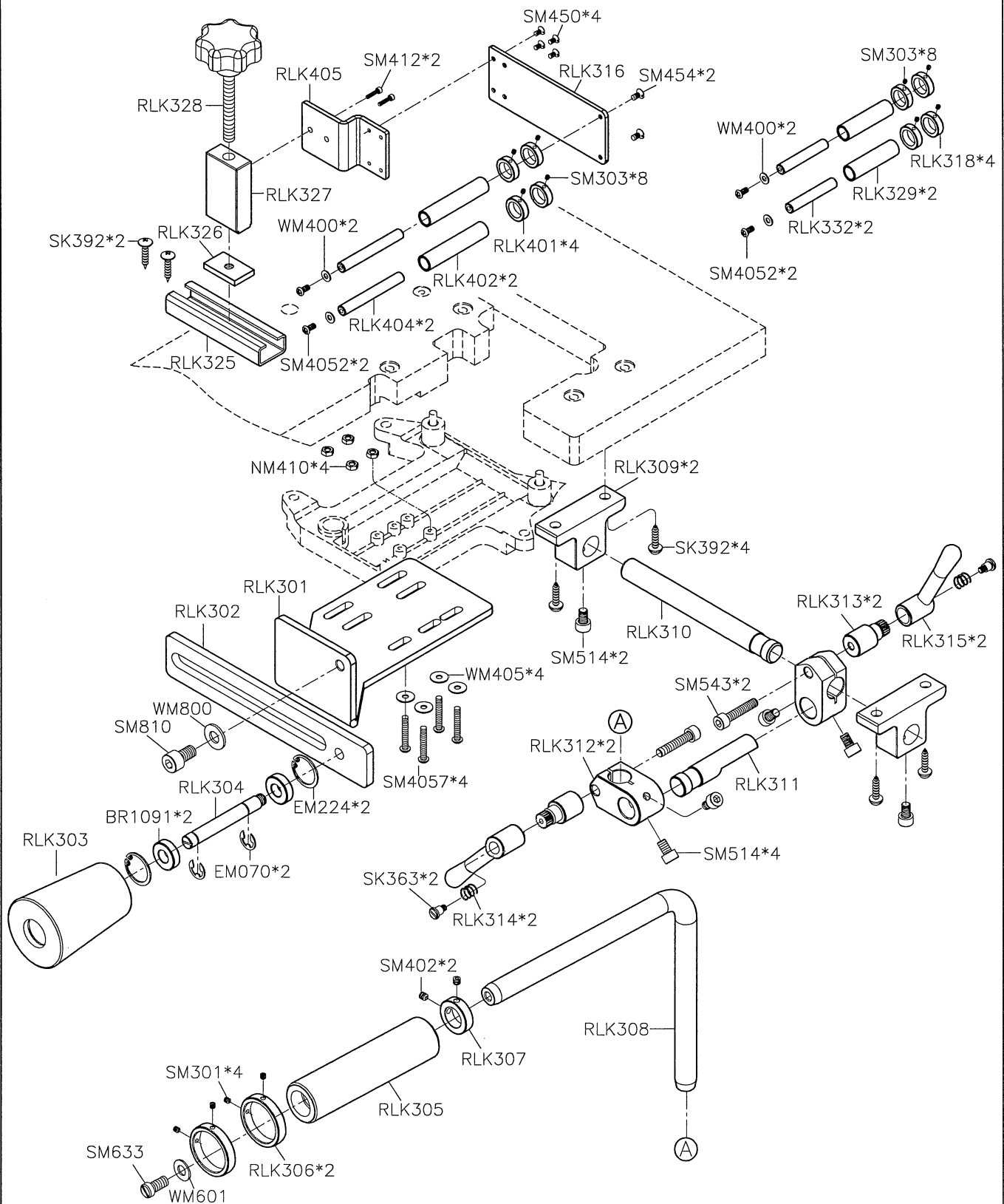
A

B

C

D

E



1

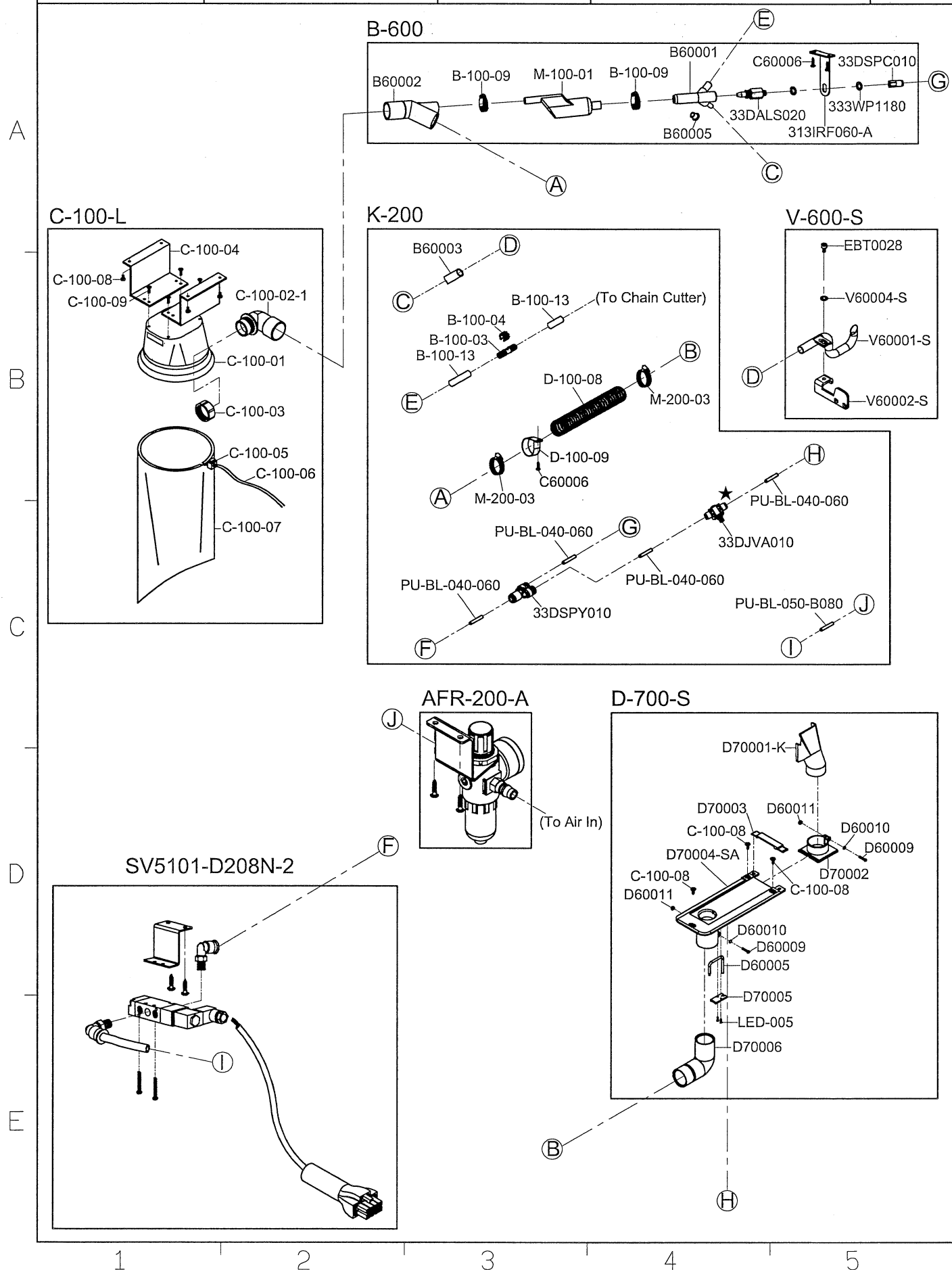
2

3

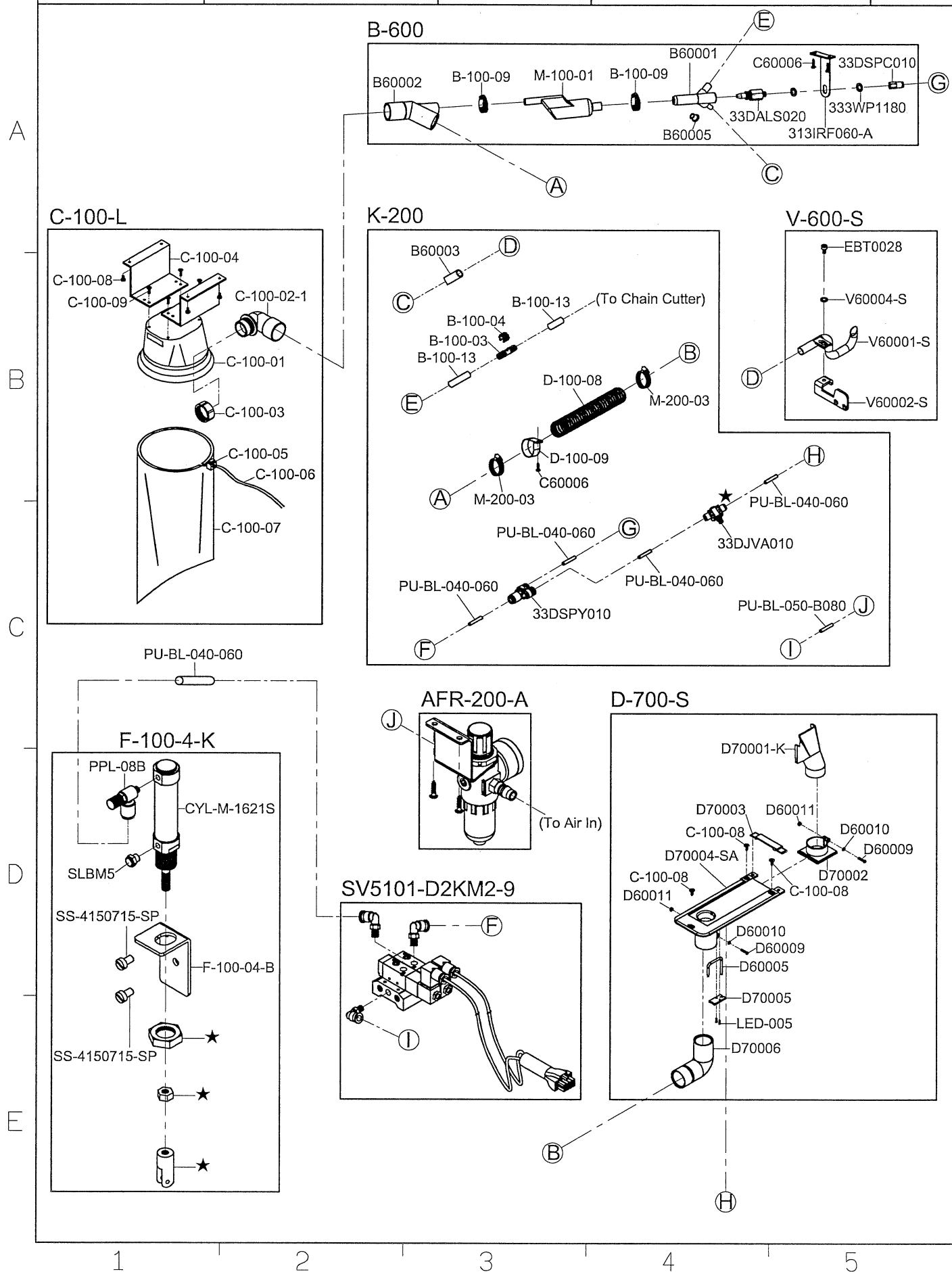
4

5

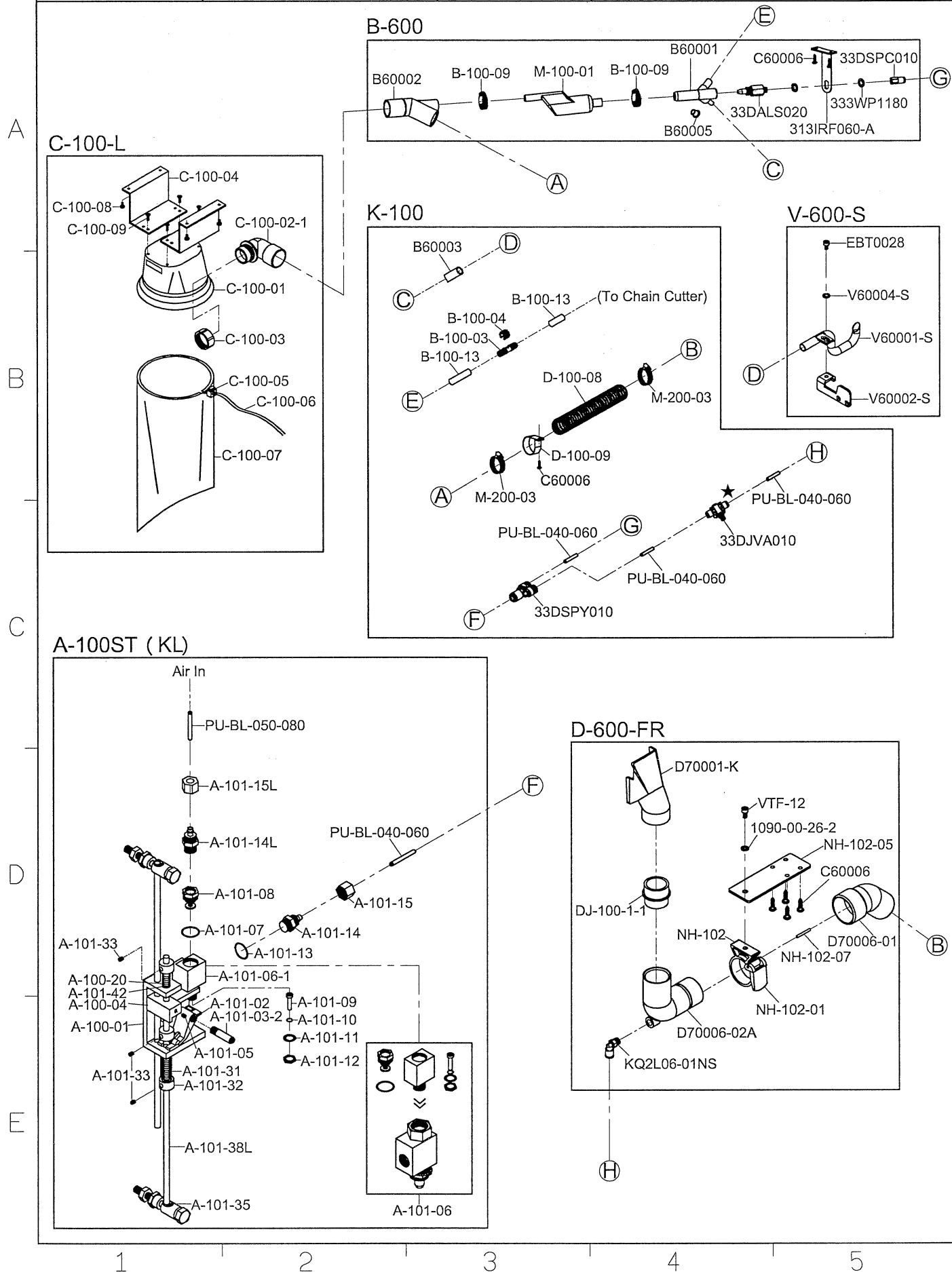
SIRUBA PARTS LIST	Series	Parts Group	Subclass / Remark	Page
	700KS 700KST	TUA-37S	Note 註記: 1) ★ Before installation, please check one side is Air IN, another side is Air OUT. 2) 空氣有效使用壓力 Effective air pressure: 4~6 kg/cm 3) 請適度修剪管子長度，以達到風力最佳效能。	1/1
				Date
				2016/11/02



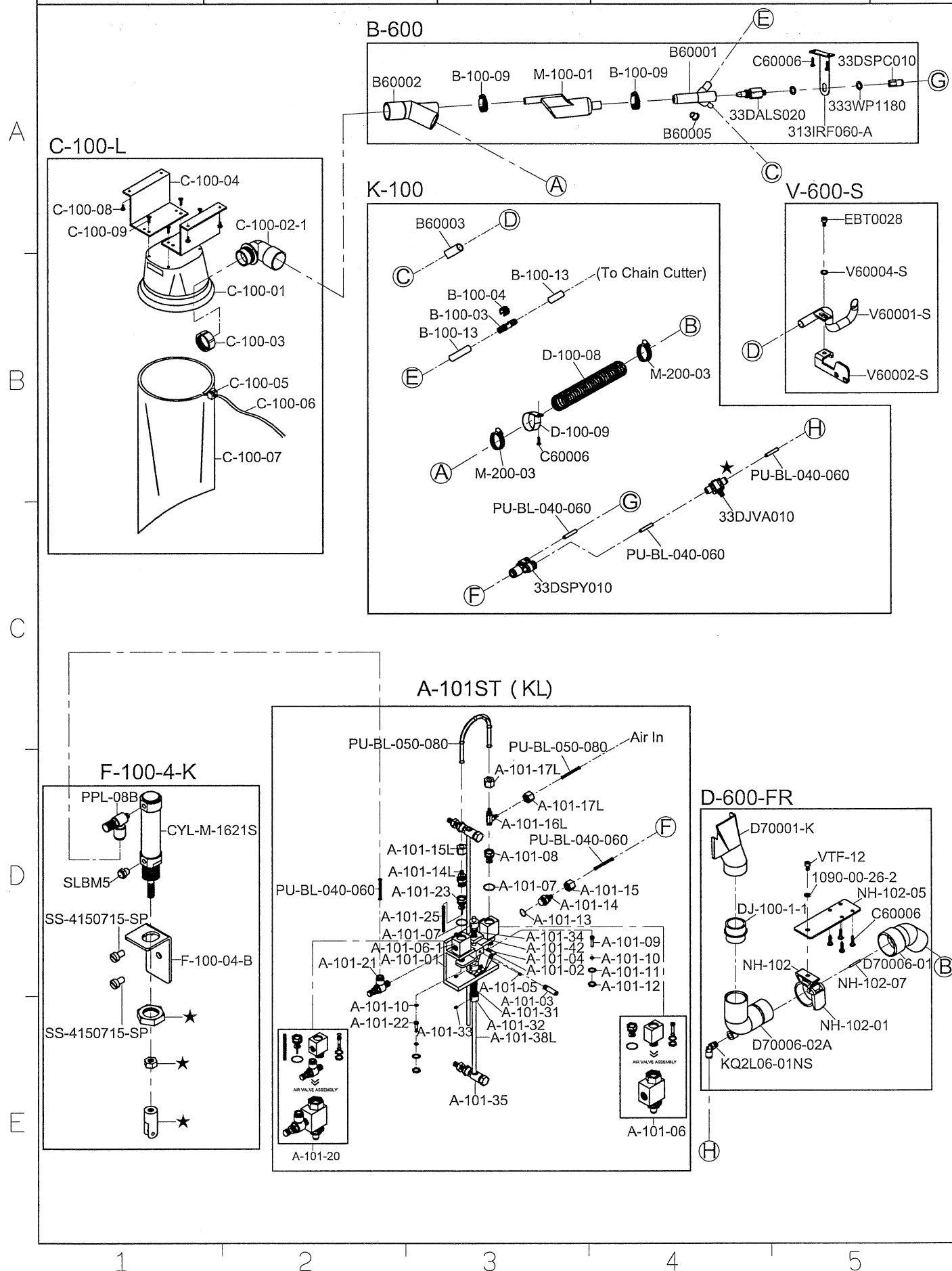
SIRUBA PARTS LIST	Series	Parts Group	Subclass / Remark	Page
	700KS	TUA-38S	Note 註記: 1) ★ Before installation, please check one side is Air IN, another side is Air OUT. 2) 空氣有效使用壓力 Effective air pressure: 4~6 kg/cm 3) 請適度修剪管子長度，以達到風力最佳效能。	1/1
				Date
				2016/11/02



SIRUBA PARTS LIST	Series	Parts Group	Subclass / Remark	Page
	700KS 700KST	TUA-39S	Note 註記: 1) ★ Before installation, please check one side is Air IN, another side is Air OUT. 2) 空氣有效使用壓力 Effective air pressure: 4~6 kg/cm 3) 請適度修剪管子長度，以達到風力最佳效能。	1/1
				Date
				2016/11/02



SIRUBA PARTS LIST	Series	Parts Group	Subclass / Remark	Page
	700KS	TUA-40S	Note 註記: 1) ★ Before installation, please check one side is Air IN, another side is Air OUT. 2) 空氣有效使用壓力 Effective air pressure: 4~6 kg/cm 3) 請適度修剪管子長度，以達到風力最佳效能。	1/1
				Date
				2016/11/02



SIRUBA

PARTS LIST

Series

700KS-ESK専用

Parts Group

TUA-41S

Subclass / Remark

Note 註記:

- ★ Before installation, please check one side is Air IN, another side is Air OUT.
- 空氣有效使用壓力
Effective air pressure: 4~6 kg/cm
- 請適度修剪管子長度，以達到風力最佳效能。

Page

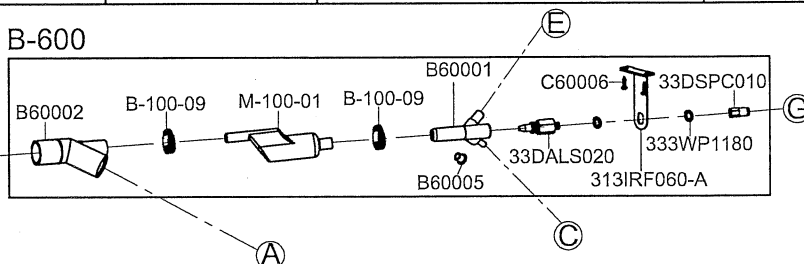
1/1

Date

2016/11/02

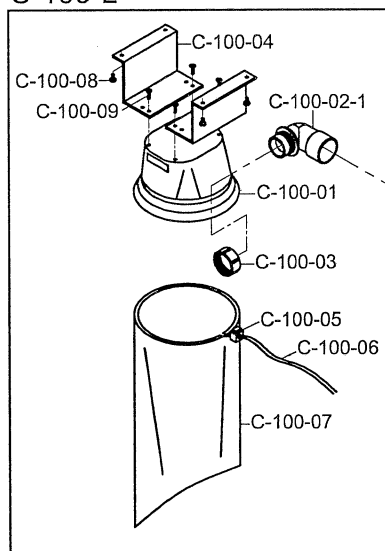
A

B-600



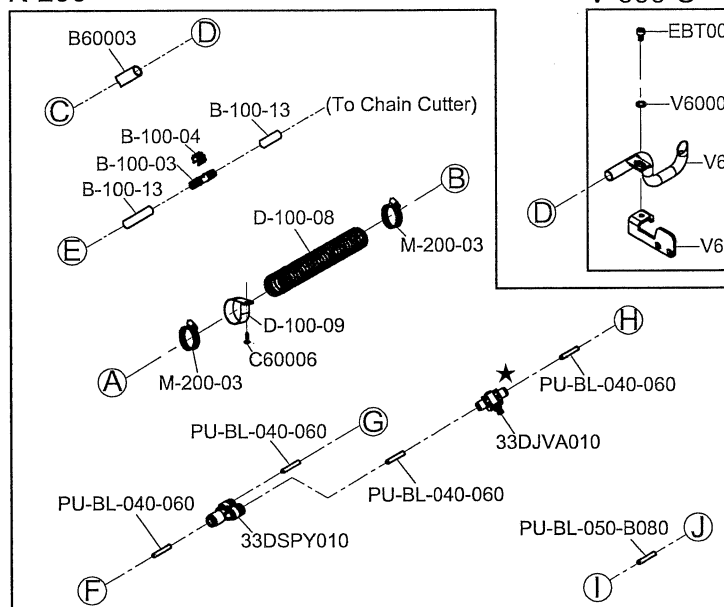
B

C-100-L

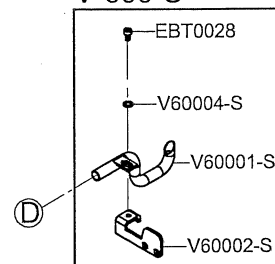


C

K-200

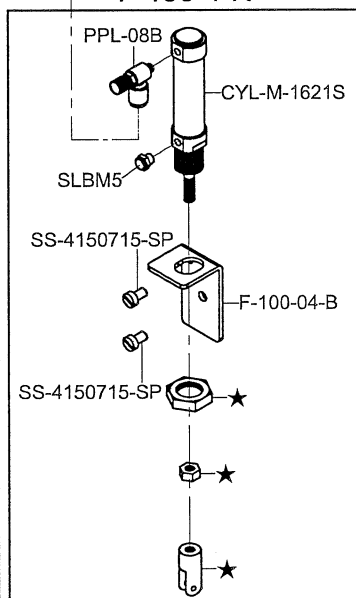


V-600-S



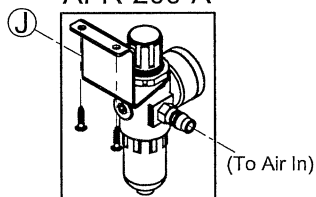
D

F-100-4-K

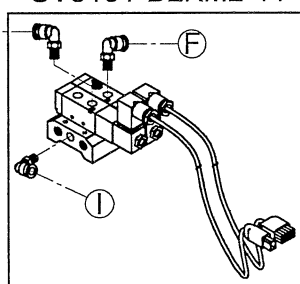


E

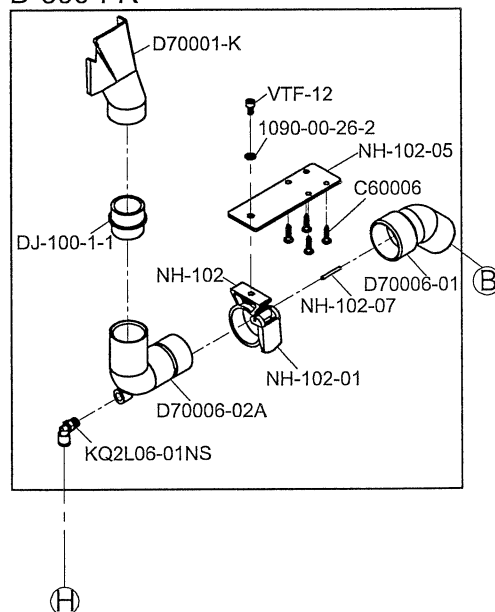
AFR-200-A



SV5101-D2KM2-11



D-600-FR



1

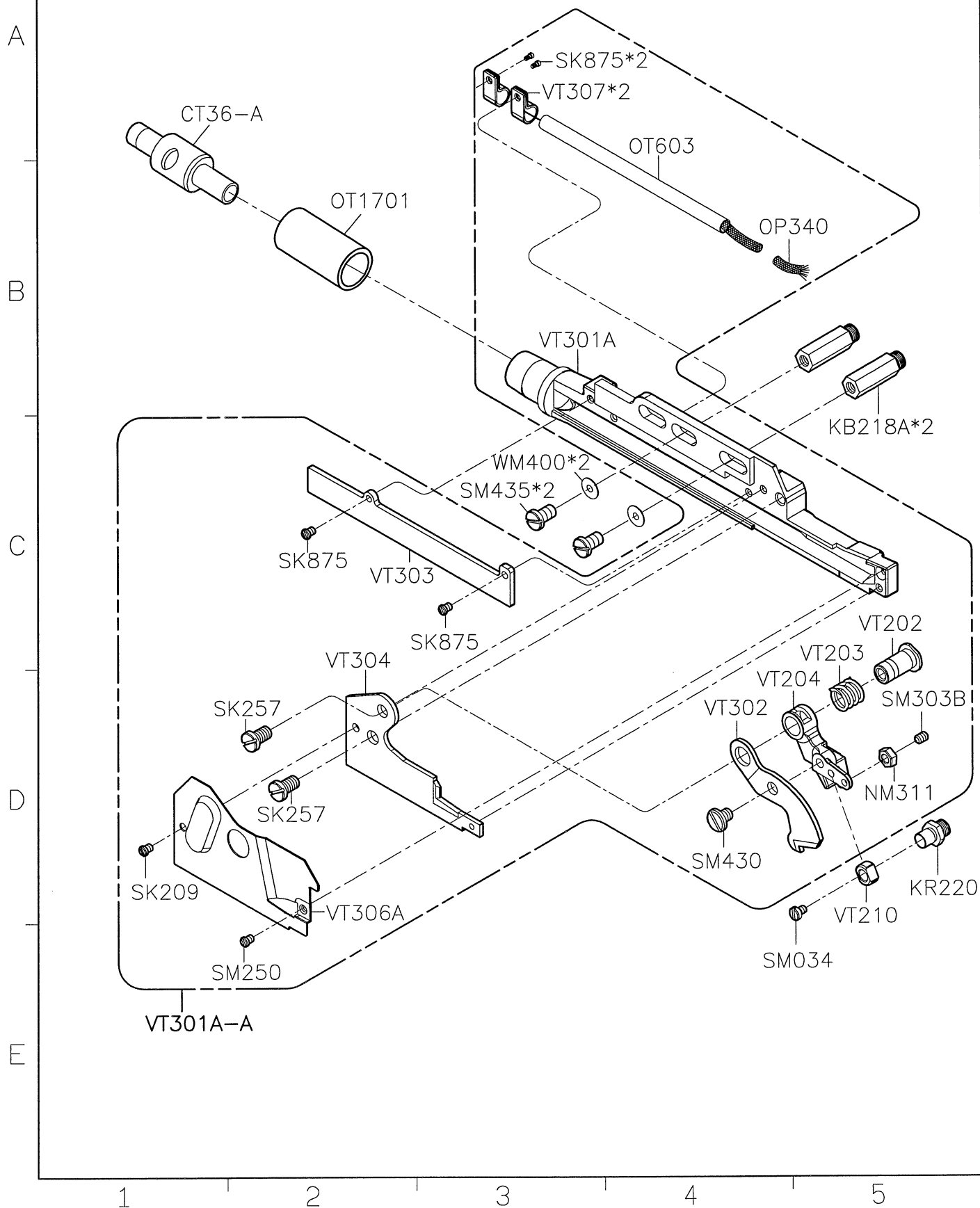
2

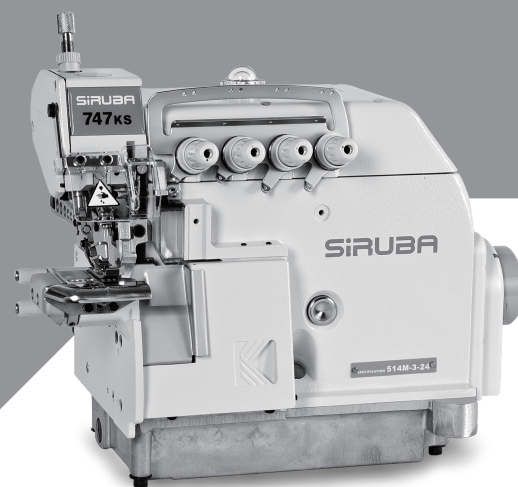
3

4

5

SIRUBA PARTS LIST	Series	Parts Group	Subclass / Remark	Page
	700KS	VT-KS		1/1
				Date
				2016/05/20





 **高林股份有限公司**
KAULIN MFG. CO., LTD.

由於對產品的改良及更新，本產品使用說明書中與零件圖之產品及外觀的修改恕不事先通知！
The specification and/or appearances of the equipment described in this instruction book & parts list are subject to change because of modification which will without previous notice.
700KS.OCT.2014